



Andrew Pearce  
PINNER

CHERRY CROFT GARDENS, PINNER, HA5 4JU £285,000





A spacious GROUND FLOOR maisonette with ALLOCATED PARKING, new lease upon completion and NO UPPER CHAIN

Lease is currently 85 years and a new lease will be granted upon completion.

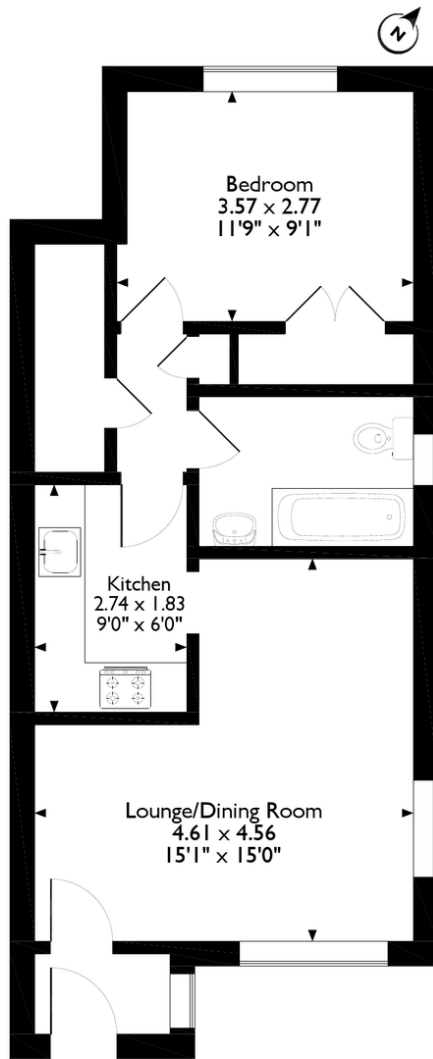
Service Charge - £720.00 per annum

Building Insurance - £217.04 per annum from Sept 2021

Ground Rent - £90.00 per annum



Westfield ParkCherrycroft Gardens, Pinner  
Approximate Gross Internal Area  
46 Sq M/500 Sq Ft



Please note that the location of doors, windows and other items are approximate and the floorplan is to be used for illustrative purposes only. Unauthorised reproduction is prohibited.



