





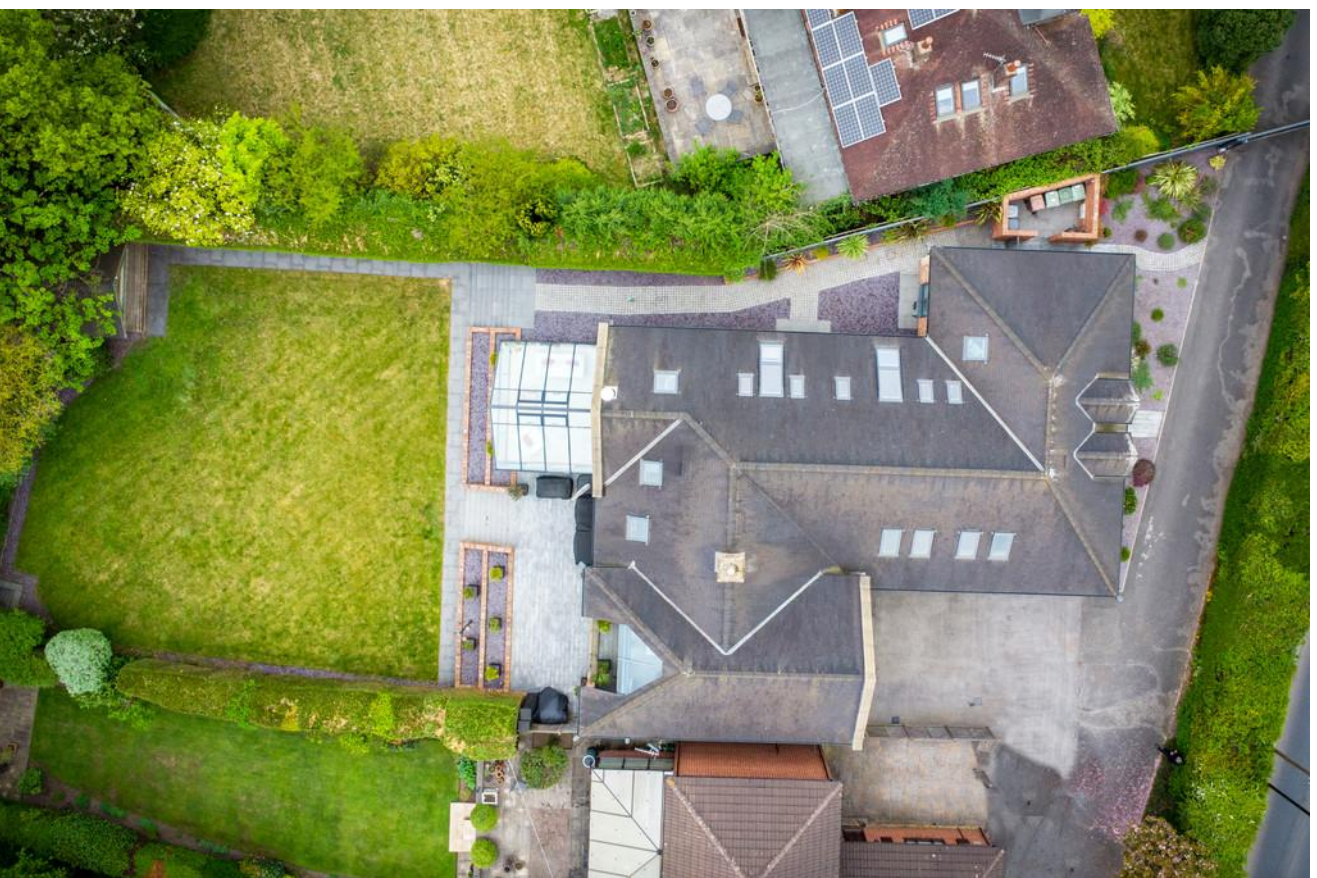
27 Park Lane Rothwell, Leeds

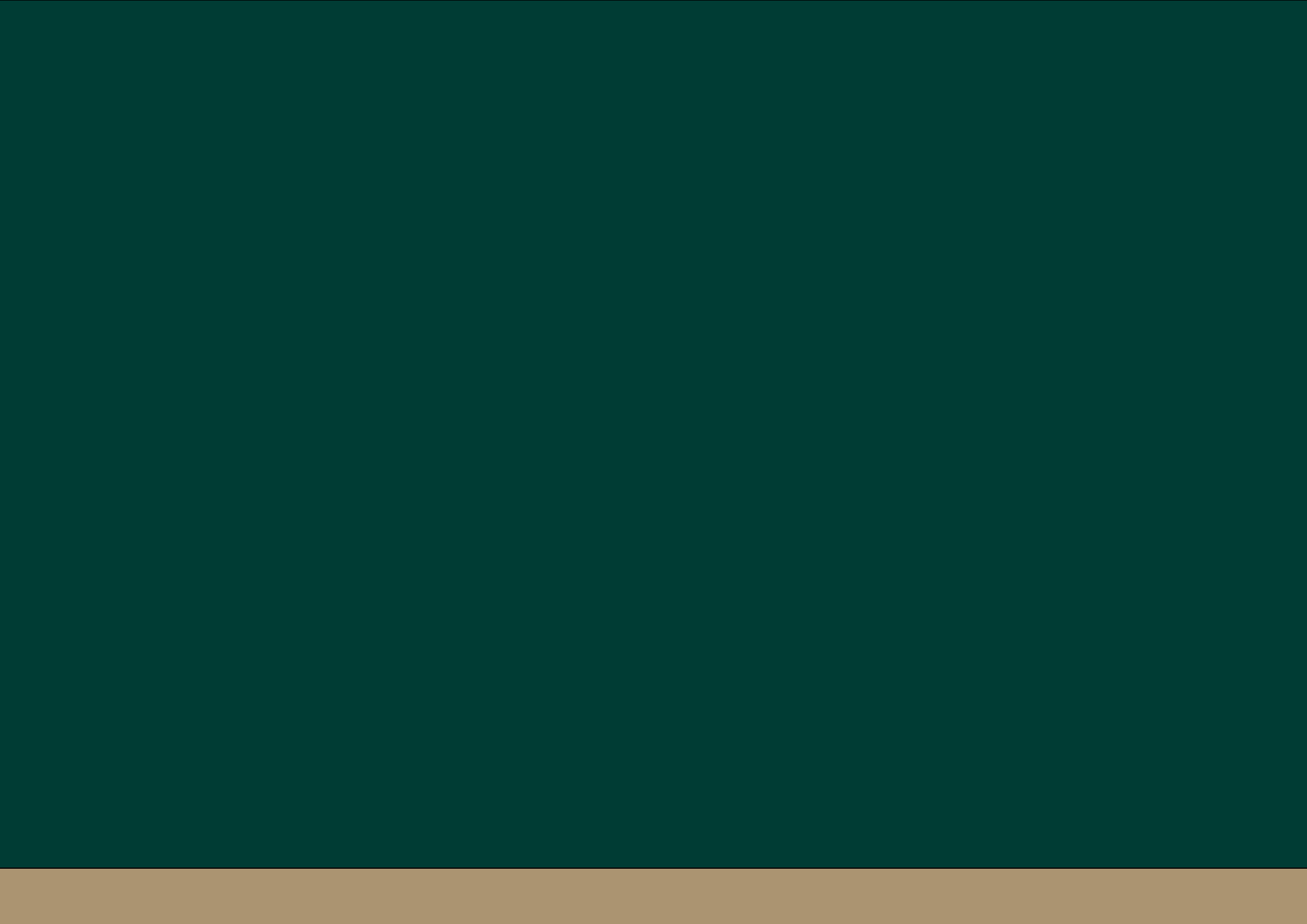
£1,500,000

THIS MAGNIFICENT HOME BOASTS OVER 5,000 SQUARE FEET OF OPULENT LIVING SPACE, COMPLEMENTED BY A GENEROUS SOUTH-FACING GARDEN THAT INVITES ABUNDANT SUNLIGHT, MAKING IT A PERFECT RETREAT FOR RELAXATION AND GATHERINGS. ACCESSED THROUGH ELECTRIC GATES, THIS PROPERTY ENSURES PRIVACY AND TRANQUILITY. INSIDE, YOU WILL FIND AN ARRAY OF IMPRESSIVE ENTERTAINMENT AREAS, STYLISH RECEPTION ROOMS, AND A SELF-CONTAINED OFFICE/ANNEX SPACE, IDEAL FOR BOTH LEISURE AND WORK.

%full_description_title[br,b,#a11c36]_dim[br,]
%





























%image_c_50_450%

%image_c_51_450%

%image_c_52_450%

%image_c_53_450%