



Ivy Avenue

£130,000

- Ideal First Time Purchase
- Well Presented Throughout
- Off Street Parking to Rear
- Enclosed Gardens
- Convenient Location
- EPC Rating: D



3 1 1



About the property

A lovingly maintained and well presented, ideal family home or first time purchase, available for sale within Neath! Conveniently located for attendance to well renowned schools including Castell Nedd & Gnoll primary's, Cefn Saeson Community Comprehensive and Neath College! With fantastic links to popular walking routes within Gnoll Country Park and various other locations throughout Neath Valley! The home is approached through a tiered and enclosed footpath to the front with side access available through to a further low maintenance rear garden. Allocated off street parking is available accessed via Gnoll View. Internally, the property comprises of an entrance hallway, with stairs to the landing and doors leading through the home, from a spacious lounge, to fitted kitchen, inner hallway with utility space and family bathroom. The first floor houses all three double bedrooms and access to the loft space! Internal viewings are highly recommended to truly appreciate this home!

Accommodation

Entrance Hallway

Lounge

13' x 14' 4" Max (3.96m x 4.37m Max)

Kitchen

17' 5" x 8' 3" (5.31m x 2.51m)

Bathroom

Landing



Bedroom One

17' 5" Max x 9' 9" (5.31m Max x 2.97m)

Bedroom Two

11' 5" x 9' Max (3.48m x 2.74m Max)

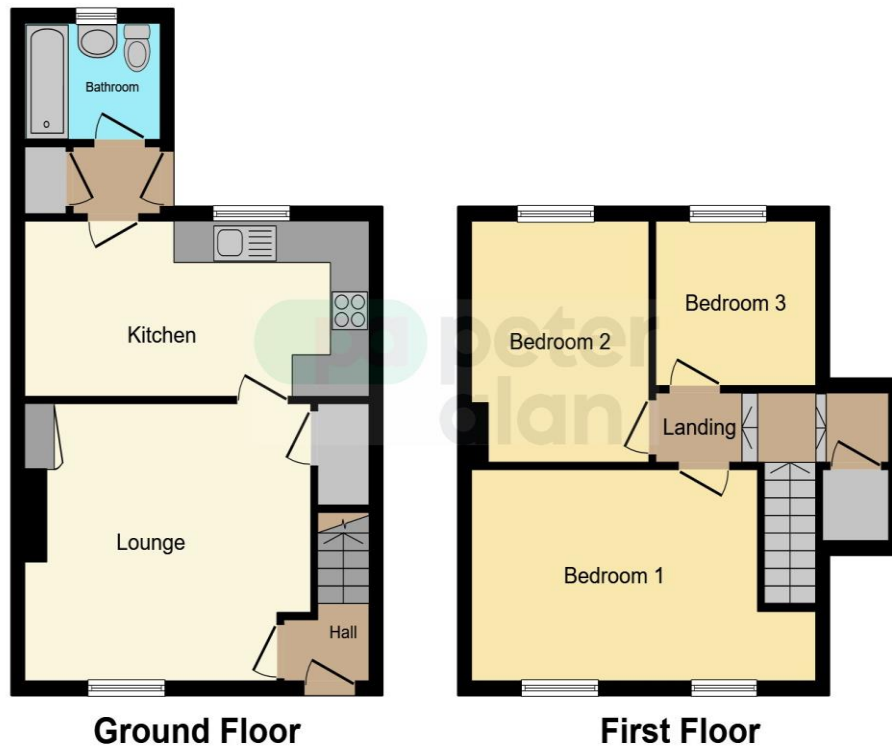
Bedroom Three

10' x 8' 4" (3.05m x 2.54m)

Front & Rear Gardens

Off Street Parking

Floorplan



This floor plan is for illustrative purposes only. It is not drawn to scale. Any measurements, floor areas (including any total floor area), openings and orientation are approximate. No details are guaranteed, they cannot be relied upon for any purpose and they do not form part of any agreement. No liability is taken for any error, omission or misstatement. A party must rely upon its own inspection(s). Powered by www.focalagent.com

Important Information

Note while we endeavour to make our sales details accurate and reliable, if there is any point which is of particular interest to you, please contact the office and we will be pleased to confirm the position for you. We have not personally tested any apparatus, equipment, fixtures, fittings or services and cannot verify they are in working order or fit for their purposes. Nothing in these particulars is intended to indicate that carpets or curtains, furnishings or fittings, electrical goods (whether wired or not). Gas fires or light fittings or any other fixtures not expressly included form part of the property offered for sale. This computer generated Floorplan, if applicable, is intended as a general guide to the layout and design of the property. It is not to scale and should not be relied upon for dimensions. Tenure: We cannot confirm the tenure of the property as we have not had access to the legal documents. The buyer is advised to obtain verification from their solicitor or surveyor.

Peter Alan Limited is registered in England and Wales under company number 2073153, Registered Office is Cumbria House, 16-20 Hockliffe Street, Leighton Buzzard, Bedfordshire, LU7 1GN. VAT Registration Number is 500 2481 05. For activities relating to regulated mortgages and non-investment insurance contracts, Peter Alan Limited is an appointed representative of Connells Limited which is authorised and regulated by the Financial Conduct Authority. Connells Limited's Financial Services Register number is 302221. Most buy-to-let