



Rodney Street, offers over £200,000

- Perfect First Time Purchase
- Master Bedroom With Ensuite
- Close Distance to Swansea City Centre
- Low Maintenance Rear Garden
- Modern Throughout
- EPC Rating: D



 3
  2
  2



About the property

Welcome to this delightful terraced house that is currently up for grabs. Tucked away in a location boasting excellent public transport links, local amenities, and nearby schools, this property is in a prime spot for first-time buyers. It's a place that offers convenience and comfort in equal measure. This residence is in good condition, ready to welcome you home. Inside, you'll find a layout that's designed for modern living. There are two reception rooms which provide ample space for family gatherings or simply relaxing after a long day. The heart of the home is the kitchen, offering plenty of storage space whilst cooking or hosting. Let's talk about the sleeping arrangements. The property comes with three bedrooms. The master bedroom is a true haven, boasting an en-suite for that extra touch of convenience. The second and third bedroom is a comfortable double, perfect for guests or for use as a home office. Outside, the property continues to impress with a garden. Imagine sunny afternoons spent here, enjoying a book or hosting a barbeque. The choice is yours. In total, this home offers three bedrooms, one kitchen, one bathroom, and two reception rooms. It's a property that has all the essentials and more. We encourage you to come and see it for yourself and feel the potential this place has to become your new home. It's a property that's ready to love and be loved in return.

Accommodation

Kitchen - 10' 4" x 8' 4" (3.15m x 2.54m)

Lounge - 13' x 10' 4" (3.96m x 3.15m)

Dining Room - 11' x 11' 2" (3.35m x 3.40m)

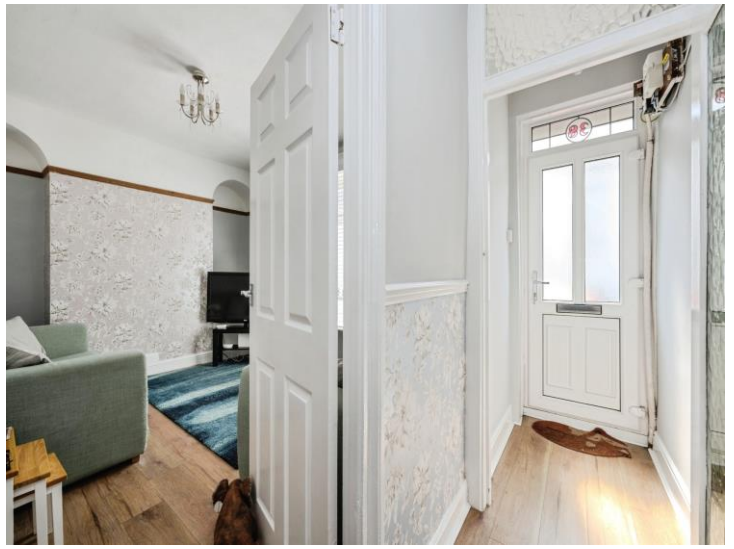
Bathroom - 7' 1" x 8' 9" (2.16m x 2.67m)

Bedroom 1 - 9' 3" x 8' 4" (2.82m x 2.54m)

Ensuite - 4' 6" x 8' 4" (1.37m x 2.54m)

Bedroom 2 - 15' 3" x 10' 4" (4.65m x 3.15m)

Bedroom 3 - 9' 6" x 11' 4" (2.90m x 3.45m)



Floorplan



This floor plan is for illustrative purposes only. It is not drawn to scale. Any measurements, floor areas (including any total floor area), openings and orientation are approximate. No details are guaranteed, they cannot be relied upon for any purpose and they do not form part of any agreement. No liability is taken for any error, omission or misstatement. A party must rely upon its own inspection(s). Powered by www.focalagent.com

Important Information

Note while we endeavour to make our sales details accurate and reliable, if there is any point which is of particular interest to you, please contact the office and we will be pleased to confirm the position for you. We have not personally tested any apparatus, equipment, fixtures, fittings or services and cannot verify they are in working order or fit for their purposes. Nothing in these particulars is intended to indicate that carpets or curtains, furnishings or fittings, electrical goods (whether wired or not). Gas fires or light fittings or any other fixtures not expressly included form part of the property offered for sale. This computer generated Floorplan, if applicable, is intended as a general guide to the layout and design of the property. It is not to scale and should not be relied upon for dimensions. Tenure: We cannot confirm the tenure of the property as we have not had access to the legal documents. The buyer is advised to obtain verification from their solicitor or surveyor.

Peter Alan Limited is registered in England and Wales under company number 2073153, Registered Office is Cumbria House, 16-20 Hockliffe Street, Leighton Buzzard, Bedfordshire, LU7 1GN. VAT Registration Number is 500 2481 05. For activities relating to regulated mortgages and non-investment insurance contracts, Peter Alan Limited is an appointed representative of Connells Limited which is authorised and regulated by the Financial Conduct Authority. Connells Limited's Financial Services Register number is 302221. Most buy-to-let