



The Dell, Kings Worthy, Winchester, Hampshire **£240,000**





YOUR MOVE





The Dell, Kings Worthy, Winchester, Hampshire

£240,000

Property Description

A modern ground floor two bedroom apartment situated in a pleasant cul-de-sac. The accommodation is accessed via it's own entrance door to a well proportioned entrance hall. The entrance hall provides access to the living room, the two double bedrooms and the bathroom, in addition there is a built in storage cupboard. The dual aspect kitchen/diner is accessed from living room. There is an airing cupboard in the bathroom and the main bedroom has fitted wardrobes. We are informed that the property has the benefit of an allocated parking space and that there is further visitor parking available, in addition there is a communal bike store and bin store. EPC grade C.

Our View

We feel that this well proportioned and smartly presented maisonette is likely to be of interest to a wide range of buyers, in particular we think it would suit those buying their first home and those wishing to down size. Notable features of this property are the two double bedrooms and the kitchen/dining room.

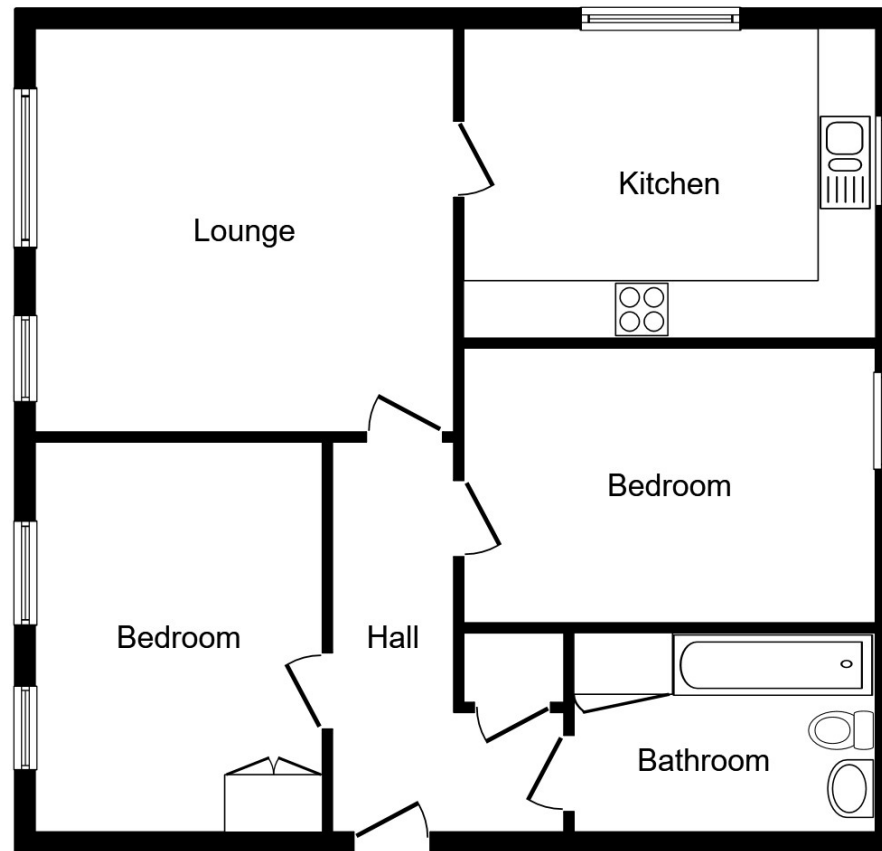
Location

Kings Worthy is situated on the North Western fringes of Winchester, about two miles from the City Centre. The location provides excellent access to the M3, which is less than two miles away, it is also ideally placed for those commuting to Andover via the A303 as well as those using the A34. Kings Worthy has numerous facilities including two shopping Parades, two Post Offices, a Public House



EPC Grade C

For full EPC please contact the branch



Floor Plan

This plan is for illustration purposes only and may not be representative of the property. Plan not to scale.

Powered by audioagent.com

IMPORTANT NOTE TO PURCHASERS: We endeavour to make our sales particulars accurate and reliable, however, they do not constitute or form part of an offer or any contract and none is to be relied upon as statements of representation or fact. The services, systems and appliances listed in this specification have not been tested by us and no guarantee as to their operating ability or efficiency is given. All measurements have been taken as guide to prospective buyers only, and are not precise. Floor plans where included are not to scale and accuracy is not guaranteed. If you require clarification or further information on any points, please contact us, especially if you are travelling some distance to view. Fixtures and fittings other than those mentioned are to be agreed with the seller.

Your Move is a trading name of your-move.co.uk, registered in England at Newcastle House, Albany Court, Newcastle Business Park, Newcastle upon Tyne NE4 7YB (number 01864469).

*Calls may be recorded and/or monitored for training and/or security purposes.

Talbot House, 83 High Street, Winchester,
Hampshire, SO23 9AP

01962 844822 * winchester@your-move.co.uk

