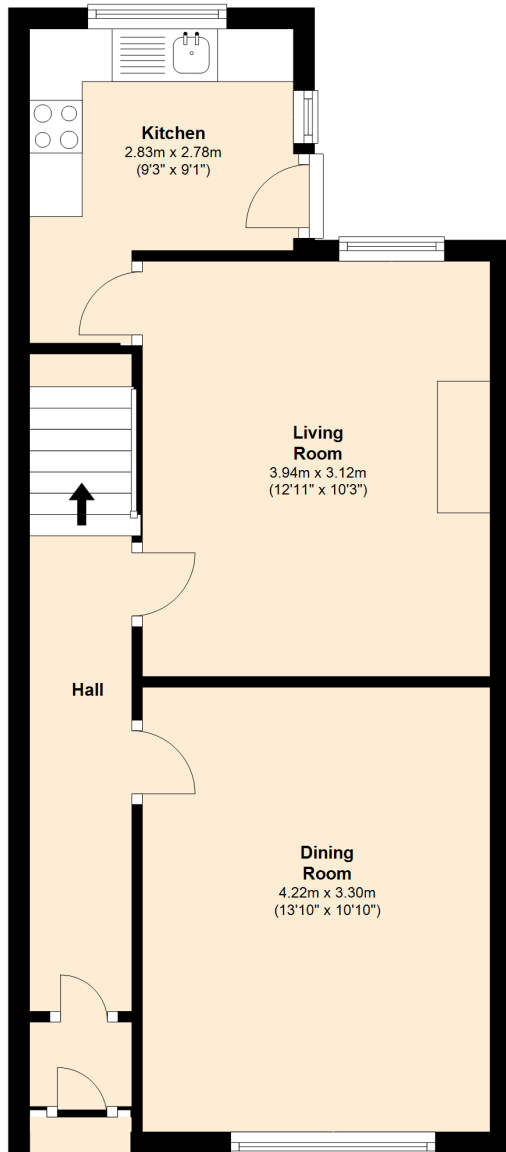


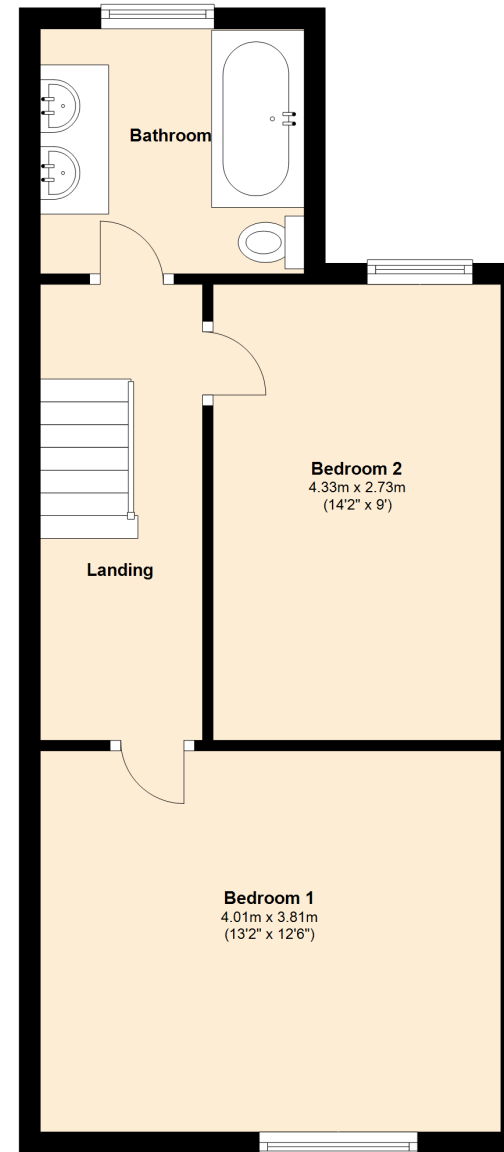
Ground Floor

Approx. 40.8 sq. metres (439.6 sq. feet)



First Floor

Approx. 41.5 sq. metres (446.2 sq. feet)



Total area: approx. 82.3 sq. metres (885.8 sq. feet)

This floorplan has been designed and completed by Valentines Estate Agents.

Plan produced using PlanUp.

2 Overton Road, Wallasey, Ch44 5XD