



Middle Barton  
Oxfordshire

## Middle Barton Oxfordshire

---

A Gas Centrally Heated and Double Glazed Four Bedroom Detached House located on a Corner Plot.

In brief the property comprises of lounge, dining room, kitchen/breakfast room and utility to the ground floor. On the first floor there are four bedrooms and a family bathroom.

Outside there is a driveway and parking for several vehicles. There is a fully enclosed rear garden.

Middle Barton is a popular village with easy access to Deddington, Banbury, Bicester, Chipping Norton and Oxford. There is a Village Primary School, Village Stores and Post Office and two Public Houses. Open Countryside is just a short stroll away.

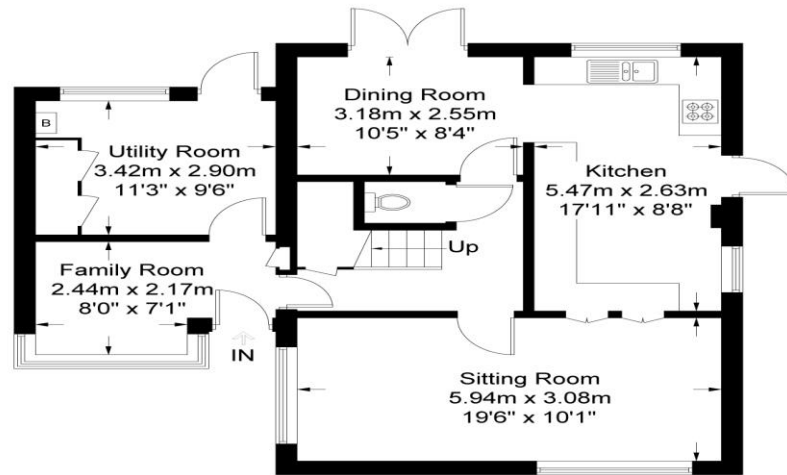




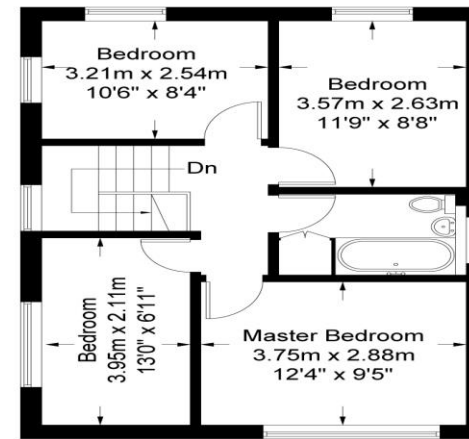


- Hall
- Lounge
- Dining Room
- Kitchen/Breakfast Room
- Utility
- Cloakroom
- Four Bedrooms
- Family Bathroom
- Open Plan Front Garden
- Fully Enclosed Rear Gardens
- Driveway and Parking for Several Vehicles
- Gas Central Heating
- Double Glazed Windows

Guide Price: £335,000



**Ground Floor**



**First Floor**



Approximate Gross Internal Area = 123.9 sq m / 1334 sq ft

Illustration for identification purposes only, measurements are approximate, not to scale. © propertybox.org

**Local Authority**  
 West Oxfordshire District Council  
 Telephone: 01993 861000

**Tenure**  
 Freehold

**Additional Information**  
 Deddington c. 6 miles  
 Chipping Norton c. 8 miles  
 Bicester c. 10 miles  
 Banbury c. 12 miles  
 Oxford c. 16 miles  
 Birmingham c. 64 miles  
 London c. 69 miles  
 London Paddington via Oxford, c. 1 hour



Market House, Market Square, Deddington, Oxfordshire, OX15 0SB  
 Tel: 01869 338898  
 Fax: 01869 338337  
 Email: deddington@mark-david.co.uk  
 www.mark-david.co.uk

**Important Notice**

Mark David Estate Agents for themselves and their clients give notice that:-

1. They are not authorised to make or give representation or warranty in relation to this property, either on their own behalf or on behalf of the Seller. They assume no responsibility for any statement made in these particulars. These particulars do not form part of any offer or contract and must not be relied upon as statements or representations of fact.
2. Whilst every attempt has been made to ensure the accuracy of the floorplan contained here, measurements of doors, windows, rooms and any other items are approximate and no responsibility is taken for any error, omission, or mis-statement.
3. All areas, measurements or distances are approximate. The particulars are intended for guidance only and are not necessarily comprehensive. A wide angle lens may have been used in photography. Mark David Estate Agents have not tested appliances or services and it should not be assumed that the property has all necessary planning, building regulation and other consents. Buyers must satisfy themselves with the property by inspection or otherwise.
4. Reference to any mechanical or electrical equipment does not constitute a representation that such equipment is capable of fulfilling its function and prospective Buyers must make their own enquiries.
5. They have no responsibility for any expenses or costs incurred by prospective Buyers in inspecting properties which have been sold, let or withdrawn. Applicants are advised to contact the Agent to check availability and any other information of particular importance to them, prior to inspecting the property, particularly if traveling some distance.