



Kingswood Place, Knowle- Guide Price £197,000

**28 KINGSWOOD PLACE
KNOWLE
FAREHAM
HAMPSHIRE
PO17 5FQ**

Located on the first floor of this converted Victorian block is this bespoke two bedroom apartment.

The property itself comprises two bedrooms with an en-suite to the master bedroom, open plan living/dining room, kitchen and a family bathroom.

Externally there is off road parking and communal gardens.

- First Floor Apartment
- Two Bedrooms
- En-Suite To Master Bedroom
- Open Plan Living/Dining Room
- Allocated Off Road Parking
- No Forward Chain





Located on the first floor of the building, this two bedroom apartment benefits from a mixture of period features such as sash windows and high ceilings and is a fantastic opportunity for a buy to let investor or first time buyer.

Entering into to the entrance hallway where you will find access to all principle rooms. The hallway itself is spacious and has a single built in storage cupboard.

The kitchen is situated to the front of the apartment and has a range of eye and base level storage units, integrated double oven, electric hob, dishwasher, washing machine and fridge freezer. A right hand drainer sink with mixer taps sits directly beneath a large sash window.

The master bedroom has a built in double wardrobe and benefits from an en-suite which comprises of a W/C, walk in shower and sink with surrounding vanity unit.

The open plan living dining room is of generous size and has two large sash windows. These windows allow natural light to flood through the room and offer views of the communal gardens below.

Completing the property is the second bedroom which is double in size and the family bathroom comprising a bath with shower over, WC and wash basin.

Externally there is allocated off road parking, visitor parking and communal gardens.

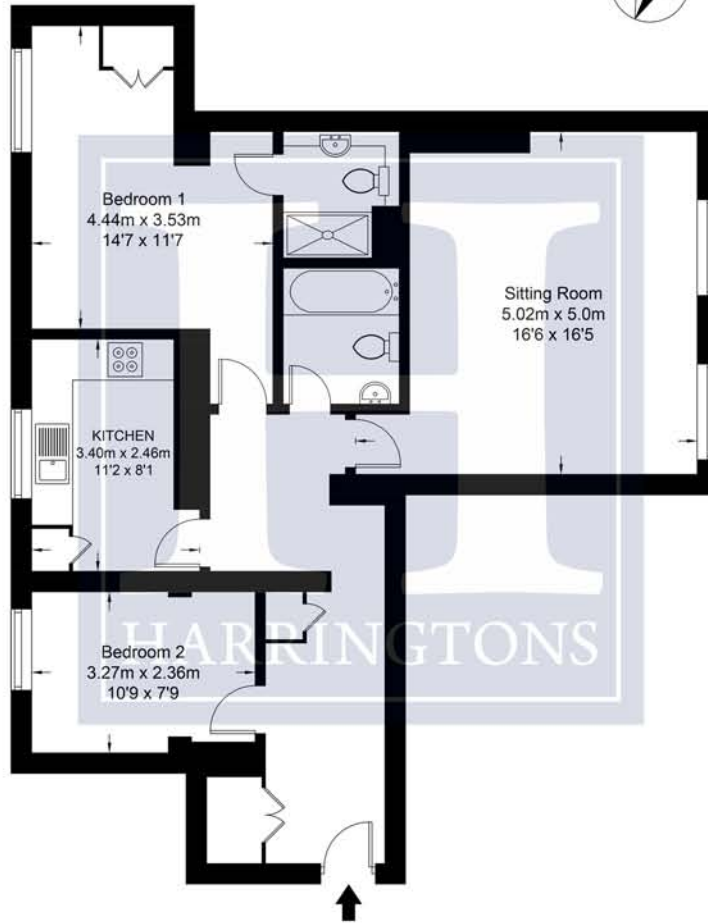
THE LOCATION

Knowle is a small village approximately two miles from Wickham. This former Victorian hospital complex has been tastefully developed by Berkeley Homes. Knowle has a range of amenities including a cricket pitch, community centre, beauty salon and store. A wider range of amenities can be found in Wickham and Fareham both less than ten minutes away by car.



Kingswood Place, Knowle Village, PO17

Approximate Gross Internal Area = 77.44 sq m / 833.55 sq ft
Total = 77.44 sq m / 833.56 sq ft



1st Floor

Produced for Harringtons Property Services Limited.

Whilst every attempt has been made to ensure the accuracy of the floorplan contained here, measurements of doors, windows, rooms and any other items are approximate and no responsibility is taken for any error, omission, or misstatement. This plan is for illustrative purposes only and should be used as such by any prospective purchaser.



Wickham Office
The Old Timbers, The Square,
Wickham, Hampshire PO17 5JG
Tel. 01329 834835
Email. wickham@harringtonsproperty.co.uk
www.harringtonsproperty.co.uk

Important Notice: Harringtons, their clients and any joint agents give notice that 1: They are not authorised to make or give any representations or warranties in relation to the property either here or elsewhere, either on their own behalf or on behalf of their client or otherwise. They assume no responsibility of any statement that may be made in these particulars. These particulars do not form part of any offer or contract and must not be relied upon as statements or representations of fact. 2: Any areas measurements or distances are approximate. The text, photographs and plans are for guidance only and are not necessarily comprehensive. It should not be assumed that the property has all necessary planning, building regulation or other consents and Harringtons have not tested any services, equipment or facilities. Purchasers must satisfy themselves by inspection or otherwise.