



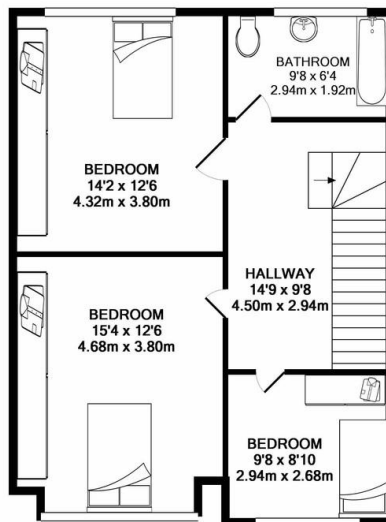
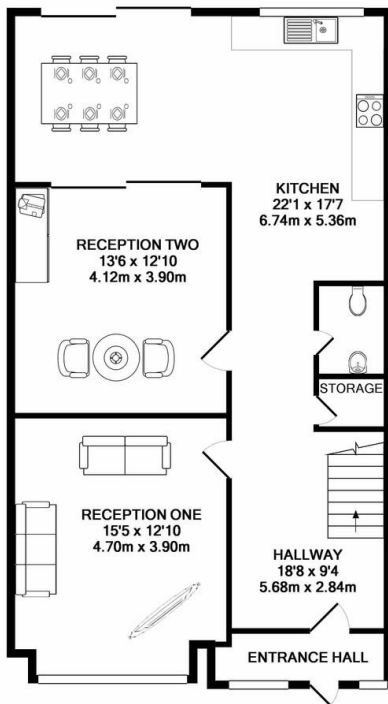
St Johns Road

Wembley, Wembley, , HA9 7JB

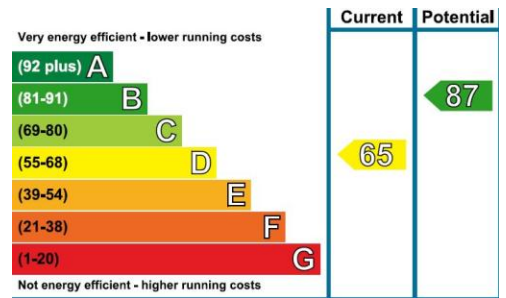
Asking Price Of £575,000

# Property Summary

Looking to Invest, acquire a house in great location!!! This three bedrooms mid-terrace house is positioned at a stone throw distance from Wembley High Road, Wembley Central. The property is very close to an array of amenities i.e. Restaurants, Shopping, Schools as well as transport links. This family home is comprise of three bedrooms, two receptions, extended



TOTAL APPROX. FLOOR AREA 1513 SQ.FT. (140.6 SQ.M.)  
Whilst every attempt has been made to ensure the accuracy of the floor plan contained here, measurements of doors, windows, rooms and any other items are approximate and no responsibility is taken for any error, omission, or mis-statement. This plan is for illustrative purposes only and should be used as such by any prospective purchaser. The services, systems and appliances shown have not been tested and no guarantee as to their operability or efficiency can be given  
Made with Metropix ©2018



- Fully double glazed windows
- Rear low maintenance garden
- Concern shed
- Entrance via porch
- Three bedrooms mid-terrace house
- The property is very close to an array of amenities
- Two receptions

38 Court Parade  
Wembley  
Middlesex  
HA0 3HS

www.propertyhubltd.com  
sales@propertyhubltd.com  
0208 459 3333

Agents Note: Whilst every care has been taken to prepare these particulars, they are for guidance purposes only. All measurements are approximate and for general guidance purposes only and whilst every care has been taken to ensure their accuracy, they should not be relied upon and potential buyers/tenants are advised to recheck the measurements