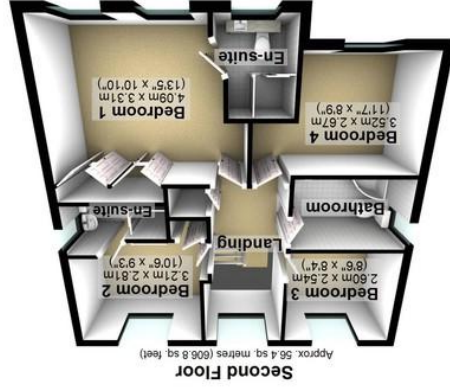
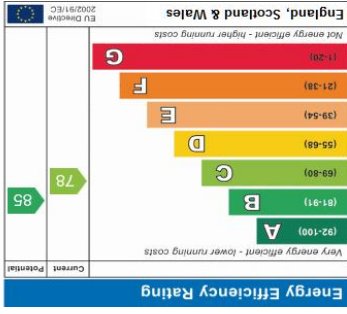
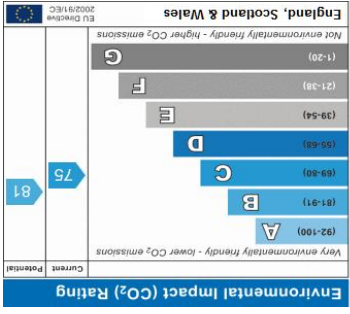
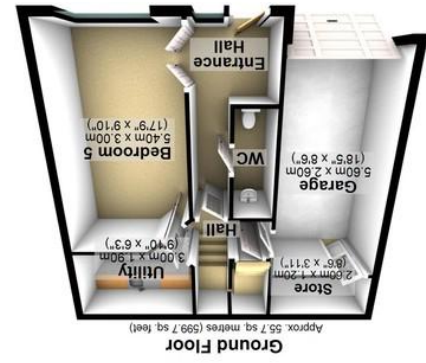
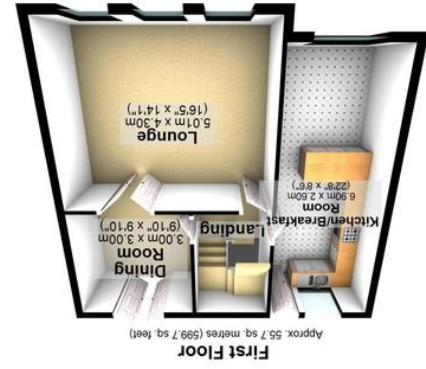
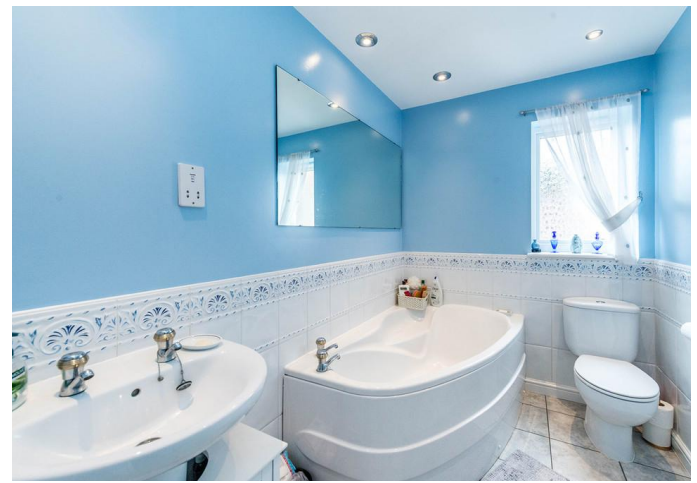


Agents Note: Whilst every care has been taken to prepare these particulars, they are for guidance purposes only. All measurements are approximate and whilst every care has been taken to ensure their accuracy, they should not be relied upon and potential buyers/tenants are advised to recheck the measurements.



Total area: approx. 167.8 sq. metres (1806.3 sq. feet)  
All measurements are approximate  
Plan produced using Floorplan





12 Rose Hill View | Mosborough | Sheffield | S20 5PR Property Tenure: Freehold

An internal inspection is required to appreciate the standard and space on offer in this imposing and functional family home. Forming part of this exclusive and much sought after estate number twelve has a well presented and versatile range of accommodation spread over three levels. Being ideally situated to take advantage of not only the superb transport links but also the wealth of local amenities and ample green spaces. The property briefly consists of entrance hallway, downstairs WC, integral garage, occasional room, utility room, large and bright lounge, well appointed kitchen dining room with ample space for a dining room, four great sized bedrooms (one with en-suite) and family bathroom. Outside are larger than average private gardens and to the front is off road parking.



**PROPERTY FEATURES**

- FOUR/FIVE BEDROOMS
- DETACHED
- GREAT FAMILY HOME
- LARGE PRIVATE GARDENS
- INTEGRAL GARAGE
- REPUTABLE LOCAL SCHOOLS
- OFF ROAD PARKING
- QUIET DEVELOPMENT
- TWO RECEPTION ROOMS
- GREAT STORAGE

**OFFERS IN THE REGION OF ;  
£380,000**

