



BRITISH
PROPERTY
AWARDS

2018



GOLD WINNER

ESTATE AGENT IN
LEIGH-ON-SEA



BRITISH
PROPERTY
AWARDS

2017



GOLD WINNER

ESTATE AGENT
IN LEIGH-ON-SEA



East Beach Park, Shoeburyness

FIRST TO SEE WILL BUY: Castle Estate Agents are pleased to offer for sale this 2 DOUBLE bedroom 2 bathroom stunning detached park home set in this fantastic position on this sought after site next to the park and beach, this property is in excellent condition and benefits from off street parking.

- 2 Bedroom
- Off street parking
- 2 x Bathrooms
- Lounge/Diner
- Gas central heating
- Detached bungalow
- Own garden
- 2 x Dressing rooms
- Double glazed
- Beautiful condition

£250,000 Freehold

Front aspect

Sweeping landscaped shingled areas bedded plants and large paved patio area to side and rear, outside light, gated side access, block paved off street parking x 1 car, outside tap, 2 large metal sheds, double glazed door with frosted glass inset to:

Inner hall

Loft access with ladder, power and lighting, coving, down lighters, doors to all rooms, 2 x radiators, storage cupboard.

L shaped lounge/Diner 19' 10" by 18' 1" (6m 5cm by 5m 51cm), Max

Wall mounted lights, 4 x double glazed Georgian style windows to the front and side aspect, wall mounted feature electric fire place, power points, tv points, 2 x radiators, fitted curtains and blinds, open plan to diner.

Kitchen 15' 2" by 9' 3" (4m 62cm x 2m 82cm)

Down lighters, coving, Velux window, White high gloss eye level and base level units, roll top work surfaces, integral washing machine, tumble dryer and fridge freezer, stainless steel 1 1/4 bowl single drainer sink, mixer taps, 4 ring gas hob with over extractor fan and double oven, power points, radiator, double glazed Georgian style windows and door to the side aspect with fitted blinds.

Bedroom 1 11' 4" by 9' 2" (3m 45cm by 2m 79cm), (I)

Double glazed Georgian style window to the side aspect with fitted curtains and blinds, wall mounted tv point, power points, coving, down lighters, radiator doors to:

Dressing room 8' 8" by 4' 3" (2m 64cm by 1m 30cm), (I)

Fitted wardrobe space and storage to both sides, radiator, coving and down lighters.

En-suite

Coving, fully tiled, 3 piece White comprising of a low level flush toilet, hand wash basin in vanity unit and mixer taps, shower cubicle with wall mounted mains shower and glass sliding doors, heated towel rail, double glazed Georgian style frosted window to the side aspect fitted blinds, tiled flooring, shaver point.



Whilst we endeavour to make our sales particulars as accurate and reliable as possible, if there is any point which is of particular importance to you, please contact the office and we will be pleased to check the information. The mention of any appliances and/or services in these details does not imply that these are in full and efficient working order or have been inspected by ourselves. Please be advised that some of the particulars may be awaiting vendor approval. Please contact us should you have any queries and we will try our utmost to assist.

Bedroom 2 9' 8" by 9' 3" (2m 95cm by 2m 82cm), (I)

Coving, radiator, power points, wall mounted tv point, double glazed Georgian style window to the side aspect with fitted curtains and blind.

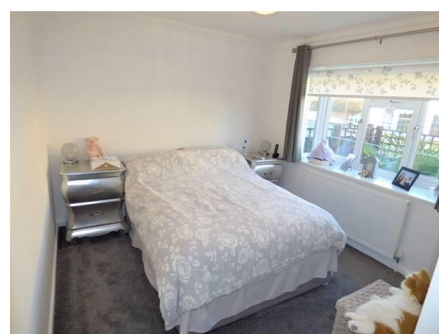
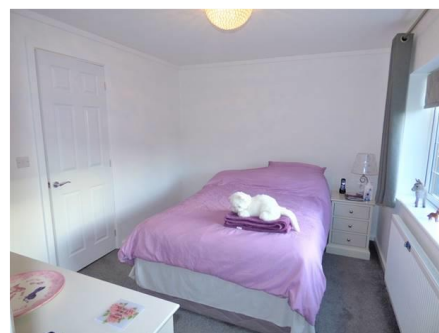
Dressing room 6' 4" by 5' 8" (1m 93cm by 1m 73cm), (I)

Fitted wardrobe space and storage to both sides, radiator, coving and down lighters.

Bathroom

Down lighters, coving, 3 piece White suite comprising of a low level flush toilet, hand wash basin in vanity unit with mixer taps, panel enclosed bath with mixer taps and shower attachment, tiled splash backs, tiled flooring, radiator, shaving point, double glazed Georgian style frosted window to the side aspect with fitted blinds, coving, down lighters, extractor fan, shaver point.

Patio area



Whilst we endeavour to make our sales particulars as accurate and reliable as possible, if there is any point which is of particular importance to you, please contact the office and we will be pleased to check the information. The mention of any appliances and/or services in these details does not imply that these are in full and efficient working order or have been inspected by ourselves. Please be advised that some of the particulars may be awaiting vendor approval. Please contact us should you have any queries and we will try our utmost to assist.



Whilst we endeavour to make our sales particulars as accurate and reliable as possible, if there is any point which is of particular importance to you, please contact the office and we will be pleased to check the information. The mention of any appliances and/or services in these details does not imply that these are in full and efficient working order or have been inspected by ourselves. Please be advised that some of the particulars may be awaiting vendor approval. Please contact us should you have any queries and we will try our utmost to assist.



Whilst we endeavour to make our sales particulars as accurate and reliable as possible, if there is any point which is of particular importance to you, please contact the office and we will be pleased to check the information. The mention of any appliances and/or services in these details does not imply that these are in full and efficient working order or have been inspected by ourselves. Please be advised that some of the particulars may be awaiting vendor approval. Please contact us should you have any queries and we will try our utmost to assist.