



Lagham Road
South Godstone
RH9 8HL

Guide price of £575,000



4



2



1

Robert
Leech.



129 Lagham Road, South Godstone, RH9 8HL

An impeccably presented family home that has been extended to make full use of the impressive corner plot. Offering ample off road parking, a detached garage and a West facing garden this property makes the perfect family home.

The ground floor accommodation comprises a large reception room with french doors to the conservatory, an open plan kitchen/diner, utility room and downstairs cloakroom. The recently refurbished living room is centred around the feature fire place and is flooded with light from the windows to the front and french doors to the rear. The contemporary kitchen has fitted base and wall units finished with a marble worktop. There is space for a rangemaster cooker, a dishwasher and fridge freezer and also benefits from a breakfast bar, there is plenty of space for a dining table with both rear and side access to the garden.

Upstairs there are four bedrooms, a family bathroom with over bath shower, W/C and vanity unit hand basin, an en-suite to the master bedroom, which also benefits from built in wardrobes as does bedroom one.

Outside there is ample off road parking to the front and a garden with fish pond as well as a detached garage. To the rear there is a good sized decking area and secure garden laid to lawn.

- Freehold
- 4 beds, 2 baths, 1 recep
- Off road parking and garage
- Fully renovated throughtout
- Excellently located for local schools
- West facing rear garden
- Village Location
- Tandridge Council band E (£2,551.65pa)
- Living space 1,524 sq ft
- EPC rating E (54)



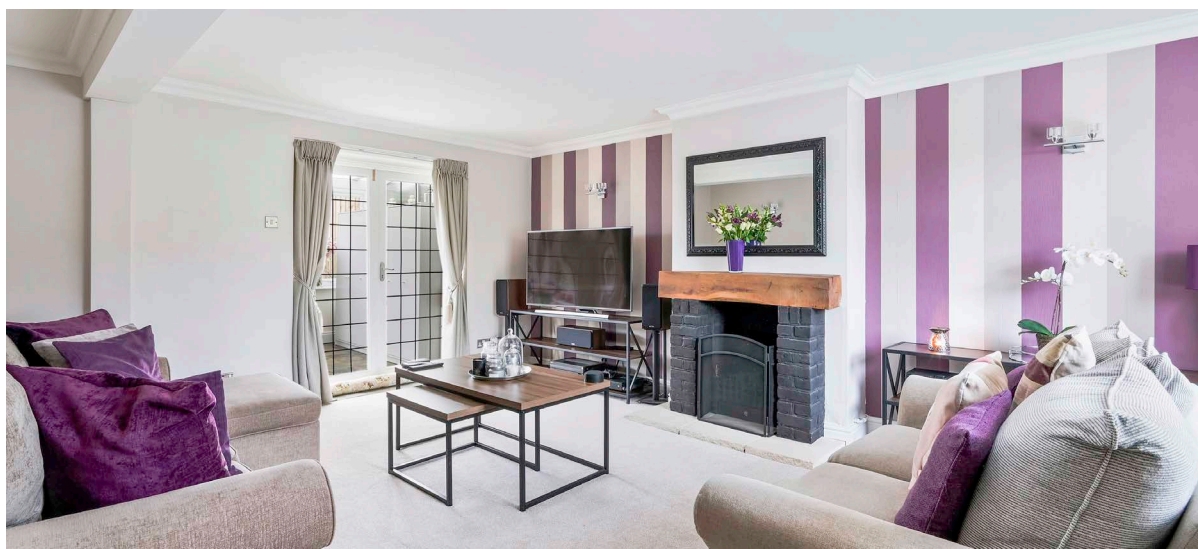
2.5 miles
Godstone



9.2 miles
Gatwick
Airport



0.5 miles
Godstone
Station



OXTED
72 Station Road East,
Oxted,
Surrey RH8 0PG
01883 717272

REIGATE
1-3 High Street,
Reigate,
Surrey RH2 9AA
01737 246246

LINGFIELD
27 High Street,
Lingfield,
Surrey RH7 6AA
01342 837783

LONDON
121 Park Lane
London
W1K 7AG
0207 0791457

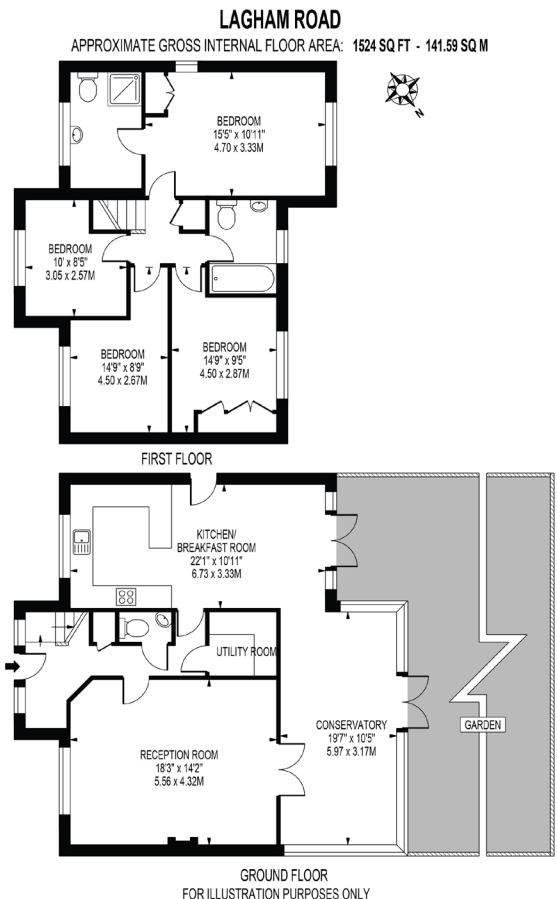


LOCATION AND TRAVEL

Situated in the heart of South Godstone village, a short walk from a convenience shop and Godstone Railway Station. A larger variety of shops and facilities can be found in Oxted, approximately 4.5 miles away, where there is a selection of supermarkets, a cinema, leisure centre (with swimming pool), a selection of boutiques, pubs and restaurants.

For commuters, there are rail services from Godstone Railway Station (only a short walk) into London (via Redhill or Tonbridge). The motorway network can be accessed at Junction 6 of the M25, approximately 3 miles away, and for international travel Gatwick Airport is approximately 10 miles away by car. A shorter commute by train is available from Oxted Railway Station with fast trains to East Croydon (from 17 minutes) and London Bridge (from 33 minutes) and London Victoria (from 39 minutes).





THIS FLOOR PLAN SHOULD BE USED AS A GENERAL OUTLINE FOR GUIDANCE ONLY AND DOES NOT CONSTITUTE IN WHOLE OR IN PART AN OFFER OR CONTRACT. ANY INTENDING PURCHASER OR LESSEE SHOULD SATISFY THEMSELVES BY INSPECTION, SEARCHES, ENQUIRIES AND FULL SURVEY AS TO THE CORRECTNESS OF EACH STATEMENT. ANY AREAS, MEASUREMENTS OR DISTANCES QUOTED ARE APPROXIMATE AND SHOULD NOT BE USED TO VALUE A PROPERTY OR BE THE BASIS OF ANY SALE OR LET.

DISCLAIMER. PROPERTY MISDESCRIPTIONS. Whilst every attempt has been made to ensure accuracy of the property details, no responsibility is taken for error, omission or mis-statement. The Agent has not yet tested any apparatus, equipment, fixtures and fittings or services and so cannot verify that they are in working order or fit for the purpose. A buyer is advised to obtain verification from their Solicitor or Surveyor. References to the Tenure of a property are based on information supplied by the Seller. The agent has not had sight of the title documents.