



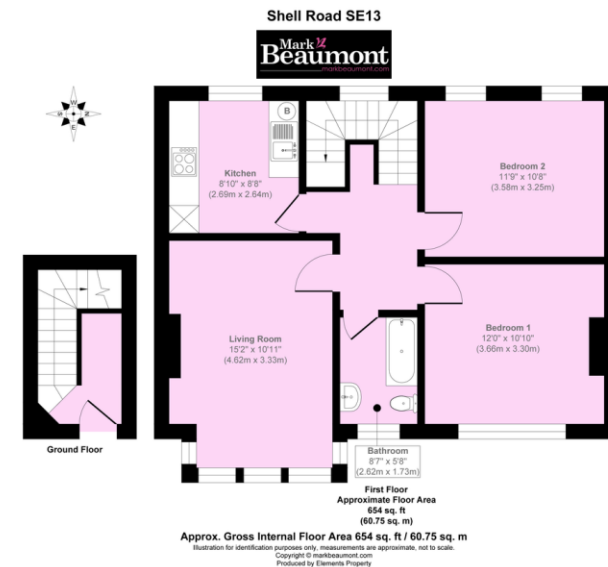
- VICTORIAN CONVERSION FLAT
- TWO BEDROOMS
- MODERN KITCHEN
- LIVING ROOM

Shell Road, Lewisham, London SE13 7TW

Offers In Region Of £450,000

A splendid, first floor two bedroom Victorian conversion flat. Situated amongst desirable environs such as: Hillyfields Park, Ladywell Village and near great transport at Lewisham Station, St Johns and Ladywell. This is a smart residential road. Share of Freehold.

#AskBeaumont



Score	Energy rating	Current	Potential
92+	A		
81-91	B		
69-80	C		75 c
55-68	D	64 d	
39-54	E		
21-38	F		
1-20	G		

South London Branch, 197
Lewisham High Street, London,
SE13 6AA

www.markbeaumont.com
020 8852 5000
sales@markbeaumont.com

Agents Note: Whilst every care has been taken to prepare these particulars, they are for guidance purposes only. All measurements are approximate are for general guidance purposes only and whilst every care has been taken to ensure their accuracy, they should not be relied upon and potential buyers are advised to recheck the measurements