



St Loyes Terrace, Exeter

A well presented two double bedroom terrace property offered to the market for sale within the popular residential area of St Loyes. Occupying a quiet no through road position and open views from the rear aspect the property is conveniently positioned for access to local amenities including a regular bus service, Royal Devon & Exeter Hospital, City Centre and the major road network surrounding the city.

The accommodation is light and spacious throughout and comprises in brief entrance hall, modern kitchen with integrated washing machine and space for fridge/freezer, open plan living / dining room to the ground floor. Two bedrooms and a bathroom fitted with a contemporary suite are situated to the first floor.

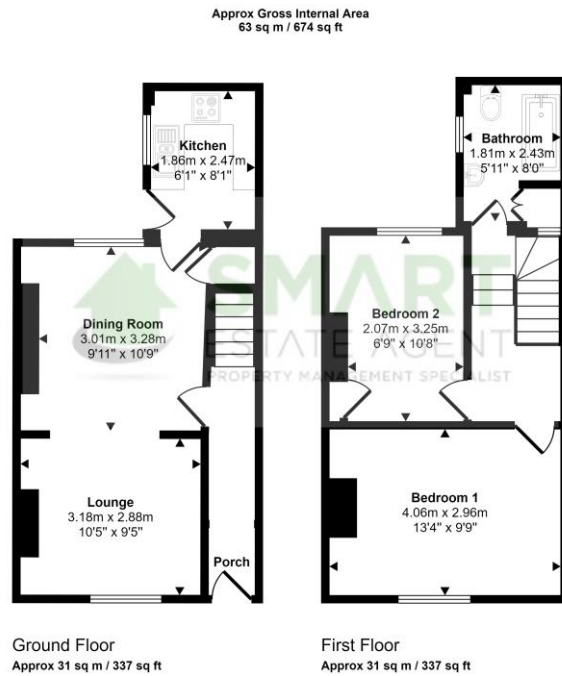
A great feature is the low maintenance garden, which is well enclosed and attracts plenty of sunshine. There is also a very useful storage space.

Perfect for first time buyers or those seeking a well located property for the rental market lying within easy walking distance of the RD&E Hospital.



- ✓ Well Presented Terrace Property
- ✓ Close To Exeter RD&E
- ✓ Two Double Bedrooms
- ✓ Modern Kitchen
- ✓ Open Plan Living / Dining Room
- ✓ Enclosed Rear Garden
- ✓ Gas Central Heating





This floorplan is only for illustrative purposes and is not to scale. Measurements of rooms, doors, windows, and any items are approximate and no responsibility is taken for any error, omission or mis-statement. Icons of items such as bathroom suites are representations only and may not look like the real items. Made with Made Snappy 360.

Score	Energy rating	Current	Potential
92+	A		
81-91	B		
69-80	C		
55-68	D	59 D	64 D
39-54	E		
21-38	F		
1-20	G		

