



Sandon Court, N4 2UX

Guide Price £525,000
Leasehold



Sandon Court

Guide Price £525,000

Leasehold

A substantial one-bedroom apartment set across the fourth floor in this popular award-winning development overlooking Clissold Park. The internal space comprises a bright & spacious reception with two sets of sliding doors, allowing plenty of light throughout. The second set of sliding doors leads out to a sizeable terrace with scenic views across Clissold Park. The Reception continues into an open-plan contemporary kitchen diner with integrated appliances. The double bedroom features floor-to-ceiling sliding doors, bespoke internal wardrobes & also has direct access to the Terrace. An ample storage cupboard is situated off of the hallway, as is a full bathroom suite. Sandon Court is situated moments from Clissold Park, Finsbury Park and the Woodberry Wetland Nature Reserve. It is served by excellent transport links via Zone 2 Victoria/Piccadilly lines, Overground & National Rail & regular local bus routes.

- One Double Bedroom
- 592sqft/55sqm
- Private Terrace with Views
- Fourth Floor with Lift Access
- EPC Rating B
- Overlooking Clissold Park
- Close to Local Amenities
- Excellent Transport Links





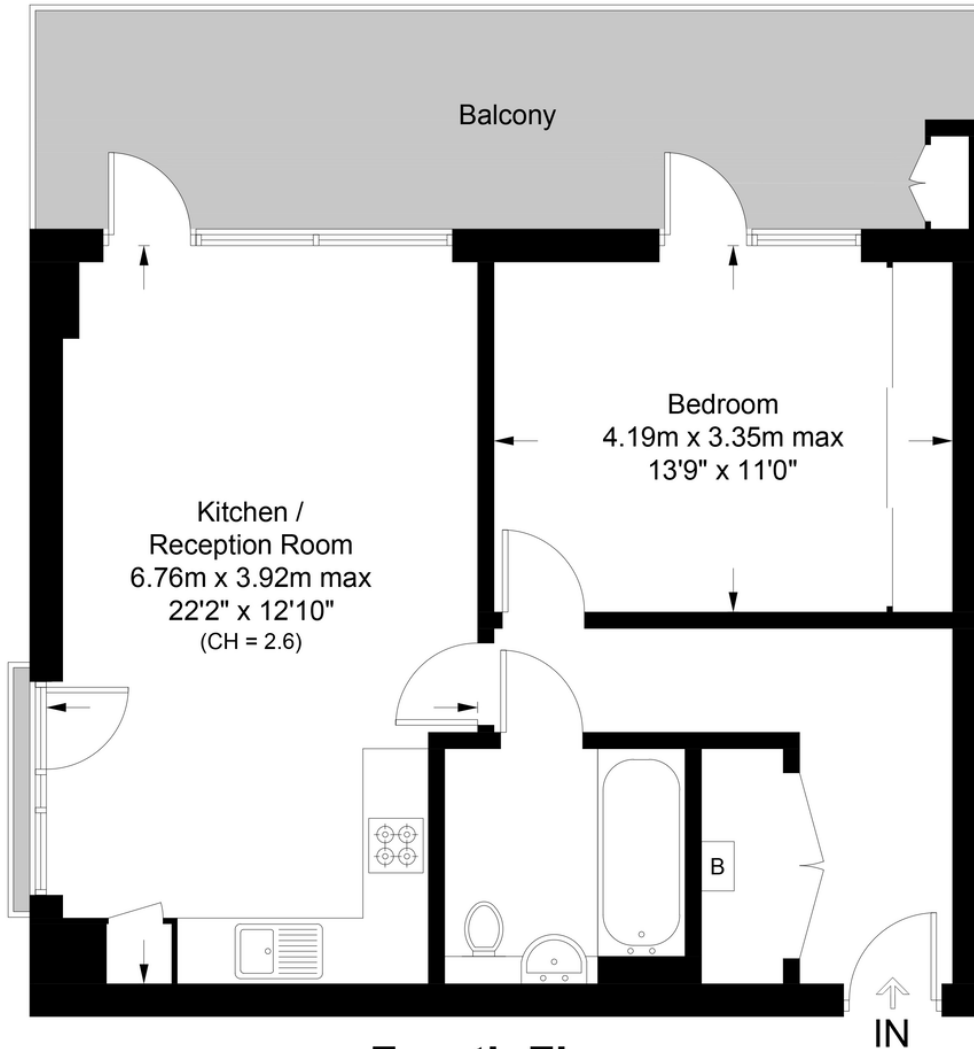


Sandon Court, N4

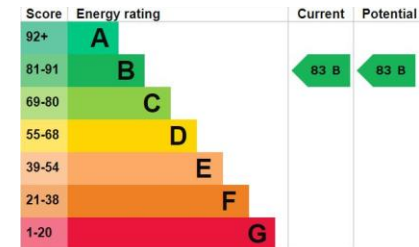
Approximate Gross Internal Area = 592 sq ft / 55.0 sq m
(Excluding External Cupboard)

DAVID ANDREW

your most valuable asset



Fourth Floor



Archway Office

671 Holloway Road
London, N19 5SE

T (0)20 7619 3750

Highbury Office

90 Highbury Park
London N5 2XE

T (0)20 7354 9111

Stroud Green Office

167 Stroud Green Road
London N4 3PZ

T (0)20 7281 2000

General Contact

E info@davidandrew.co.uk



This plan is for layout guidance only. Not drawn to scale unless stated. Windows and door openings are approximate. Whilst every care is taken in the preparation of this plan, please check all dimensions, shapes and compass bearings before making any decisions reliant upon them. (ID1025585)

DAVID ANDREW | your most valuable asset

Agent's Note:

Whilst Care has been exercised in the preparation of these sales particulars, statements about the property must not be relied upon as representations of statements or fact. Prospective purchasers must make and rely upon their own enquiries and those of professional representatives. The company accept not liability for any error contained in these particulars.

DA



Certified Property Measurer