



MILE



Ridley Road, Kensal Heights NW10

£2,650 pcm

Welcome to Ridley Road; stunning garden apartment on this tree lined street.

Discover this charming ground-floor apartment set within a beautiful Victorian conversion, offering a blend of period elegance and modern convenience. Available this November, this two-bedroom residence is presented in excellent condition and ready to welcome new tenants.

The apartment boasts a well maintained shared garden, a rare find in a Victorian conversion, providing a peaceful outdoor space ideal for relaxing or entertaining. Unfurnished, this property offers a blank canvas to personalize and make your own.

- Victorian conversion
- Ground floor apartment
- Garden
- Two bedrooms
- Available November!
- Unfurnished
- Good location
- Excellent condition
- Viewing recommended
- Close to shops and restaurants

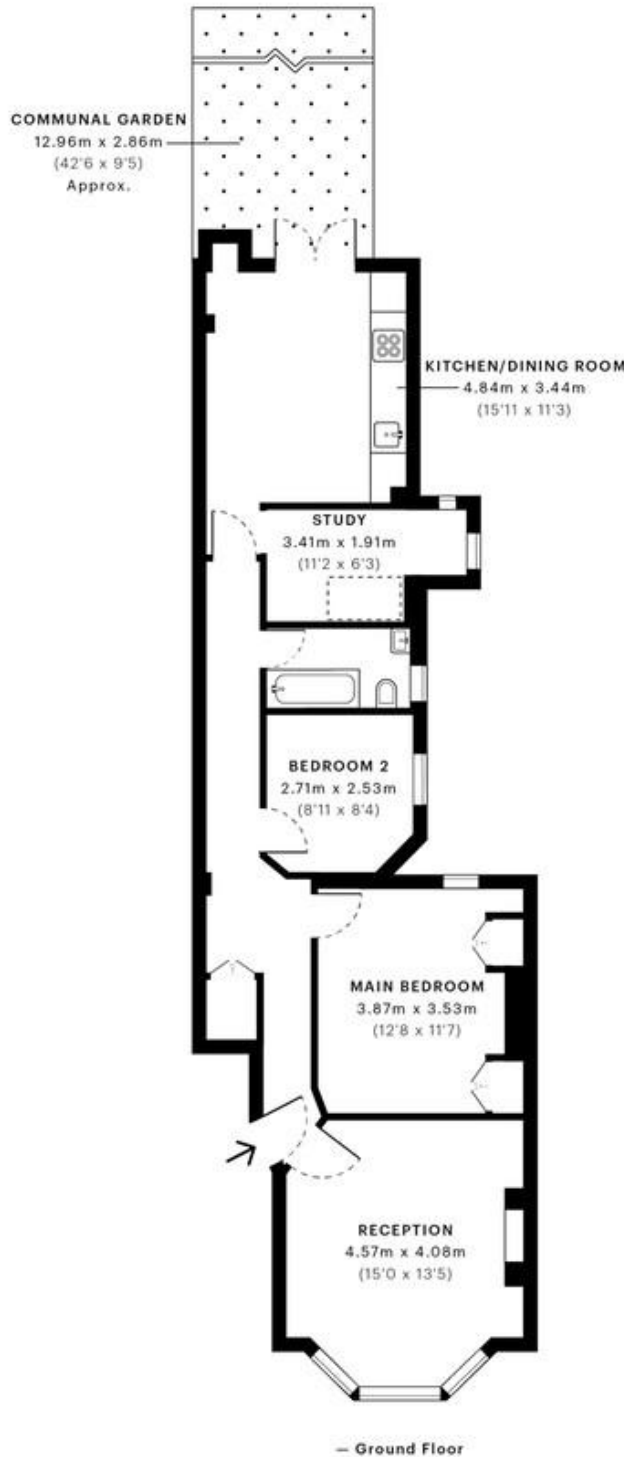


Ridley Road, NW10

CAPTURE DATE 01/03/2023 LASER SCAN POINTS 71,237,170

GROSS INTERNAL AREA

75.36 sqm / 811.17 sqft



GROSS INTERNAL AREA (GIA)
The interior of the property
75.36 sqm / 811.17 sqft

NET INTERNAL AREA (NIA)
Excludes walls and external features
Includes voids, mezzanines, basements etc.
71.04 sqm / 764.67 sqft

EXTERNAL STRUCTURAL FEATURES
Balconies, terraces, overhangs etc.
0.00 sqm / 0.00 sqft

RESTRICTED HEAD HEIGHT
Limited clear areas under 2.0m
0.98 sqm / 10.55 sqft

Specified floor plans are produced in accordance with

ENGLAND RESIDENTIAL 7500 sqm / 80794 sqft

MONEY LAUNDERING REGULATIONS 2003: Intending purchasers will be asked to produce identification documentation at a later stage and we would ask for your co-operation in order that there will be no delay in agreeing the sale.

General: While we endeavour to make our sales particulars fair, accurate and reliable, they are only a general guide to the property and, accordingly, if there is any point which is of particular importance to you, please contact the office and we will be pleased to check the position for you, especially if you are contemplating travelling some distance to view the property.

Measurements: These approximate room sizes are only intended as general guidance. You must verify the dimensions carefully before ordering carpets or any built-in furniture.

Services: Please note we have not tested the services or any of the equipment or appliances in this property, accordingly we strongly advise prospective buyers to commission their own survey or service reports before finalising their offer to purchase.