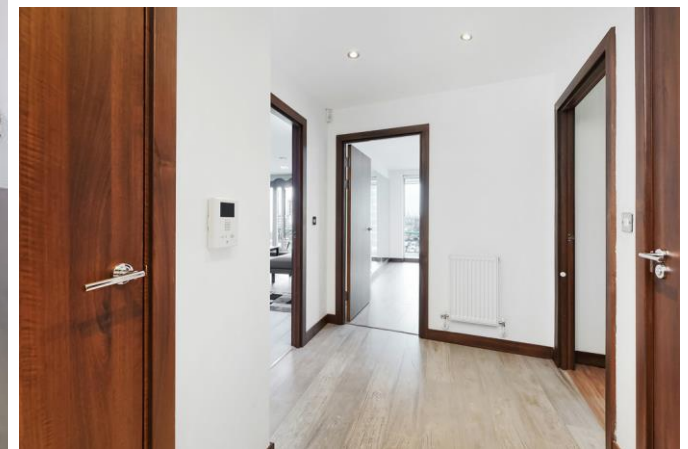


Altura Tower, Bridges Wharf
London, SW11 3GZ

PROPERTY SUMMARY

A smart, well appointed, two bedroom, two bathroom apartment with exceptional river views in Bridges Wharf, an award winning riverside development located on the south banks of the River Thames.





LOCAL AUTHORITY

Wandsworth Borough Council

TENURE

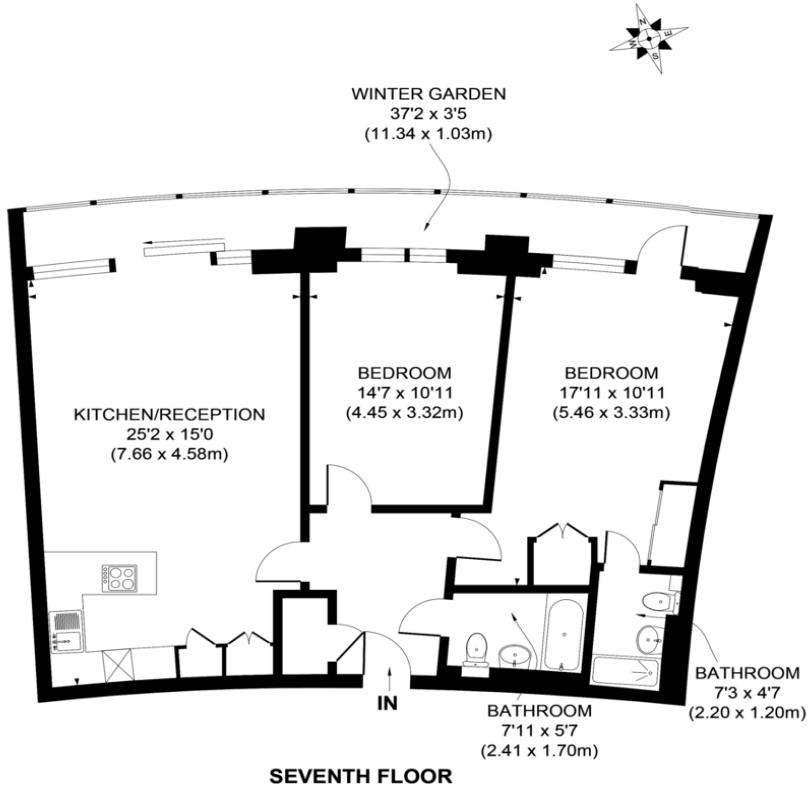
Leasehold

COUNCIL TAX BAND

Band F

VIEWINGS

By prior appointment only



APPROX. GROSS INTERNAL FLOOR AREA 1098 SQ FT / 102 SQ M

Illustration for identification purpose only, not to scale
All measurements are maximum, and includes wardrobes and window bays where applicable
Prepared by Pixangle ©. Tel 020 8870 2118

Energy Efficiency Rating		
	Current	Potential
Very energy efficient - lower running costs		
(92-100) A		
(81-91) B	84	84
(69-80) C		
(55-68) D		
(39-54) E		
(21-38) F		
(1-20) G		
Not energy efficient - higher running costs		
England, Scotland & Wales	EU Directive 2002/91/EC	

Agents Note: Whilst every care has been taken to prepare these particulars, they are for guidance purposes only. All measurements are approximate and are for general guidance purposes only and whilst every care has been taken to ensure their accuracy, they should not be relied upon and potential buyers/tenants are advised to recheck the measurements



4 Vicentia Court
Bridges Wharf
London
SW11 3GY

02073522455
info@hgproperty.co.uk
www.hgproperty.co.uk