



WEST TOWERS, , HA5 1UA

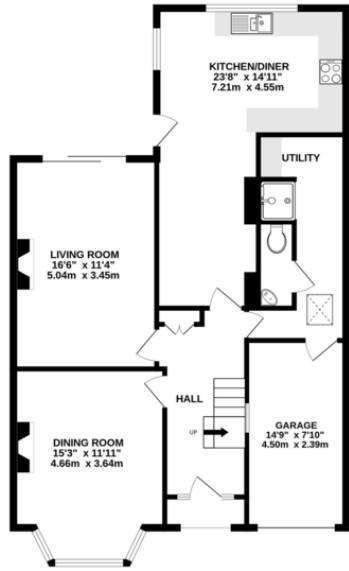
£950,000


Andrew Pearce
PINNER

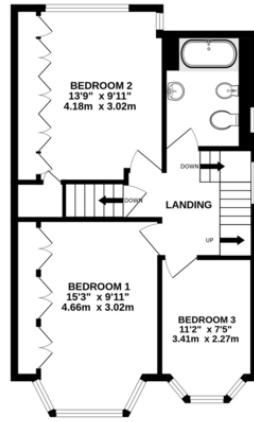
Semi-Detached House



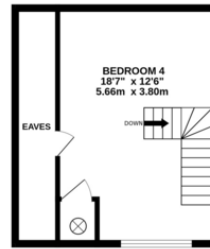
GROUND FLOOR
944 sq.ft. (87.7 sq.m.) approx.



1ST FLOOR
553 sq.ft. (51.4 sq.m.) approx.



2ND FLOOR
293 sq.ft. (27.3 sq.m.) approx.



TOTAL FLOOR AREA : 1790 sq.ft. (166.3 sq.m.) approx.

Whilst every attempt has been made to ensure the accuracy of the floorplan contained here, measurements of doors, windows, rooms and any other items are approximate and no responsibility is taken for any error, omission or mis-statement. This plan is for illustrative purposes only and should be used as such by any prospective purchaser. The services, systems and appliances shown have not been tested and no guarantee as to their operability or efficiency can be given.
Made with Metropix ©2025

