




Andrew Pearce
PINNER

CUCKOO HILL DRIVE, , HA5 3PJ £1,345,000



Detached Home

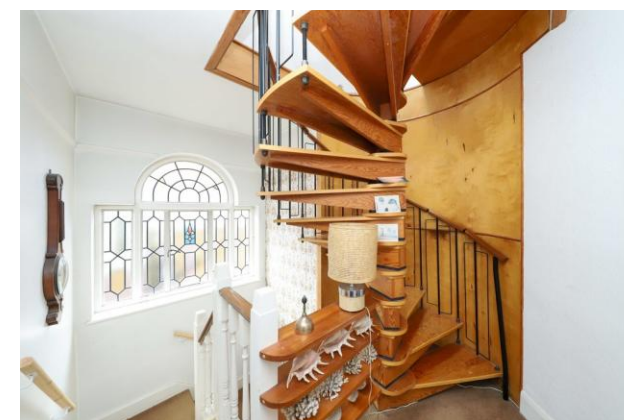
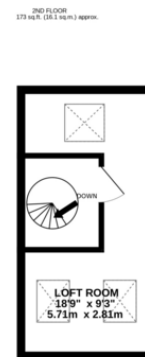
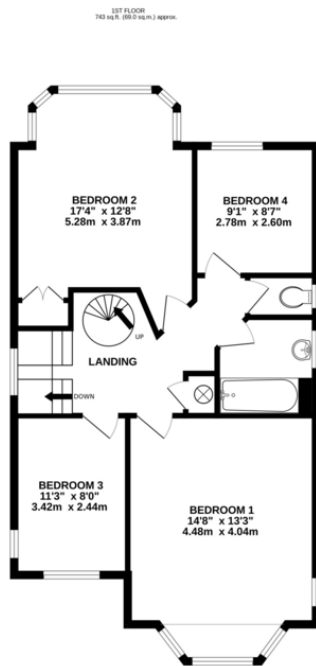
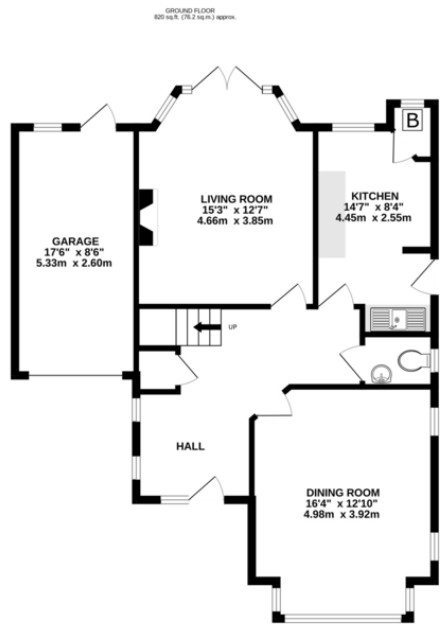
Located on one of Pinner's most desirable roads, this detached home offers an exciting opportunity for those looking to create their ideal living space. In need of full modernisation, this property is a blank canvas ready to be transformed. With a spacious plot and original character, it provides great potential for renovation and extension (STPP).

The ground floor features two light-filled reception rooms with period charm, a separate kitchen overlooking the garden, and a convenient downstairs WC. The garage, positioned off to the side, offers additional storage or potential for conversion. The layout provides an ideal foundation for an open-plan living space, perfect for modern family living.

Upstairs, the property offers four good-sized bedrooms and a family bathroom. A spiral staircase leads to a loft room that could be transformed into additional living space, such as an office or extra bedroom. The 150ft rear garden is a standout feature—currently overgrown, it offers endless potential for landscaping, outdoor entertaining, or further extension.

With no onward chain, this property presents a rare chance to refurbish and personalise a home in a sought-after location. Close to local amenities, transport links, and highly regarded schools, it's the perfect project for those looking to create a dream home in Pinner.





TOTAL FLOOR AREA: 1735 sq.ft. (161.2 sq.m.) approx.

Whilst every attempt has been made to ensure the accuracy of the floorplan contained here, measurements of doors, windows, rooms and any other items are approximate and no responsibility is taken for any error, omission or mis-statement. This plan is for illustrative purposes only and should be used as such by any prospective purchaser. The services, systems and appliances shown have not been tested and no guarantee as to their operability or efficiency can be given.

Made with Metropix ©2025

