

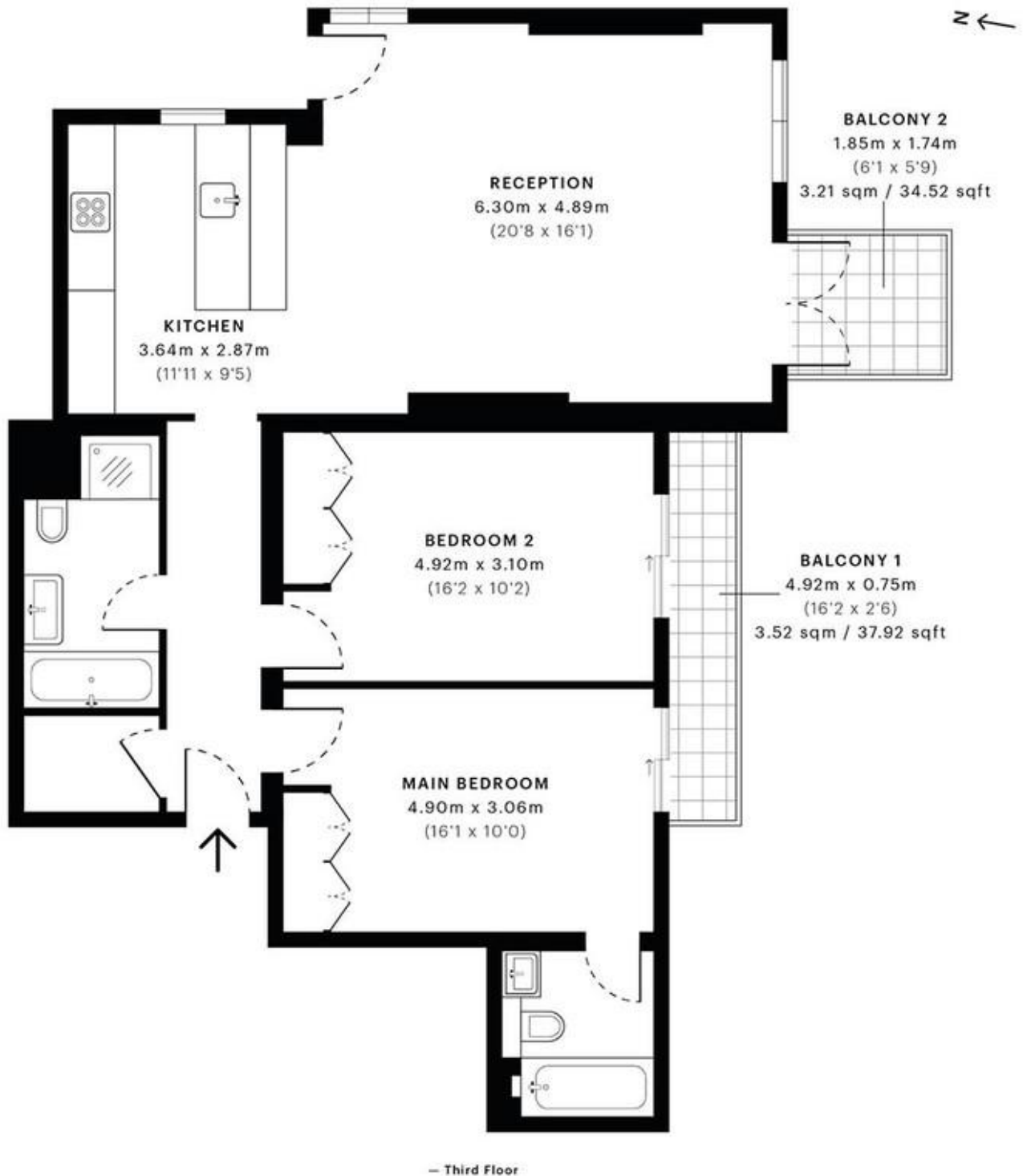


Hampstead Heights, Fitzjohns Avenue, NW3

£5,200 pcm

Mile are delighted to market this beautiful two-bedroom apartment, ideally located just moments from Hampstead Station. This stylish and spacious property offers an exceptional standard of living.

- Prime Location
- Private Gated Development
- Communal Gardens
- Internet Included
- Views of London Skylines
- 2 Double Bedrooms
- Available Late June
- Stunning Modern Flat
- Pet Friendly
- Viewing Recommended



GROSS INTERNAL AREA (GIA)
The footprint of the property
91.34 sqm / 983.18 sqft

NET INTERNAL AREA (NIA)
Excludes walls and external features
Includes washrooms, restricted head height
84.90 sqm / 913.86 sqft

EXTERNAL STRUCTURAL FEATURES
Balconies, terraces, verandas etc.
6.73 sqm / 72.44 sqft

RESTRICTED HEAD HEIGHT
Limited use area under 1.5 m
0.00 sqm / 0.00 sqft

MONEY LAUNDERING REGULATIONS 2003: Intending purchasers will be asked to produce identification documentation at a later stage and we would ask for your co-operation in order that there will be no delay in agreeing the sale.

General: While we endeavour to make our sales particulars fair, accurate and reliable, they are only a general guide to the property and, accordingly, if there is any point which is of particular importance to you, please contact the office and we will be pleased to check the position for you, especially if you are contemplating travelling some distance to view the property.

Measurements: These approximate room sizes are only intended as general guidance. You must verify the dimensions carefully before ordering carpets or any built-in furniture.

Services: Please note we have not tested the services or any of the equipment or appliances in this property, accordingly we strongly advise prospective buyers to commission their own survey or service reports before finalising their offer to purchase.