



Yeomans Way, Littleport, Ely CB6 1FL

www.pocock.co.uk



Yeomans Way, Littleport, Ely, Cambridgeshire CB6 1FL

Built by Cannon Kirk, 'The Crispin', is a three bedroom end of terrace home offering excellent accommodation throughout and positioned overlooking a small green, close to the park and local schooling.

- Entrance Hall & Cloakroom
- Lounge/Dining Room with French Doors to Garden
- Modern Fitted Kitchen
- Three Bedrooms
- En-Suite to Bedroom One
- Family Bathroom
- Enclosed Rear Garden
- No Upward Chain

Guide Price: £250,000



LITTLEPORT is a large village situated about 6 miles north of the Cathedral City of Ely. There are shopping facilities, a sports centre and public transport facilities including a railway station on the Ely to Kings Lynn and Kings Cross lines. There are two primary schools in the village, along with a recently opened Littleport & East Cambs Academy and a further special needs school. The village is by-passed giving easy access to Cambridge, which is about 20 miles away.

ENTRANCE HALL

DOWNSTAIRS CLOAKROOM

LOUNGE/DINING ROOM

17'1" x 14'7" (5.20 m x 4.45 m)

KITCHEN 14'1" x 9'7" (4.30 m x 2.91 m)

FIRST FLOOR LANDING

BEDROOM ONE 13'4" x 9'11" (4.07 m x 3.01 m)

EN-SUITE SHOWER ROOM

BEDROOM TWO 10'7" x 9'11" (3.22 m x 3.01 m)

BEDROOM THREE 8'10" x 6'10" (2.68 m x 2.08 m)

BATHROOM

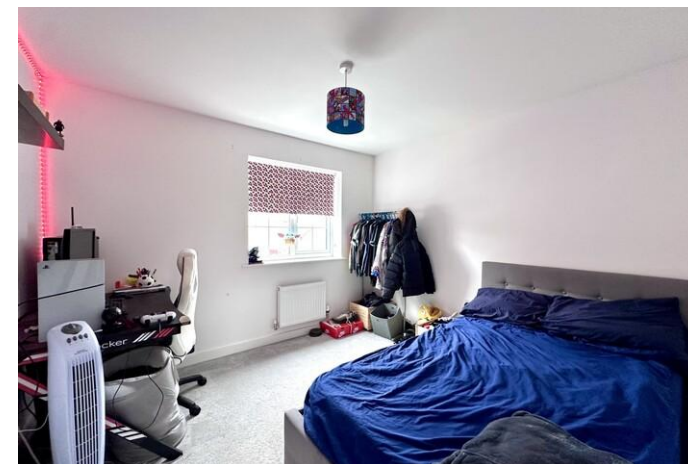
Tenure The property is freehold

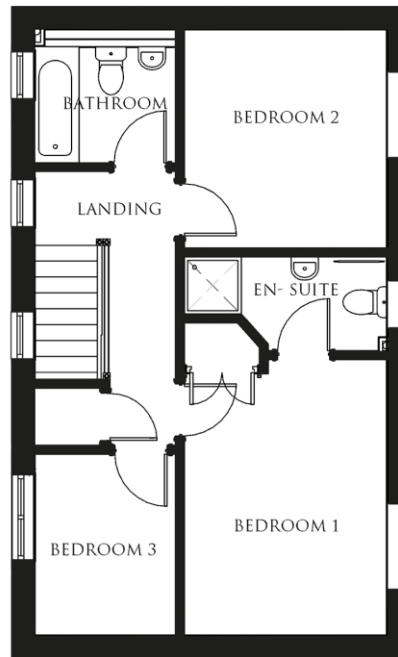
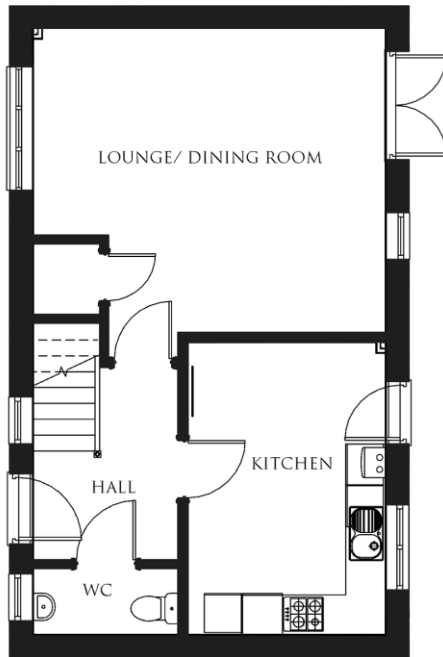
Council Tax Band C

EPC B (84/95)

Viewing By Arrangement with Pocock & Shaw
Tel: 01353 668091
Email: ely@pocock.co.uk
www.pocock.co.uk

Ref MJW-7195





Agent's note: (i) Unless otherwise stated on the front page the information contained within these particulars has been provided and verified by the owner or his/her representative(s) and is believed to be accurate. All measurements are approximate. (ii) The vendor(s) reserve(s) the right to remove any fixtures, fittings, carpets, curtains or appliances unless specific arrangements are made for their inclusion in the sale. (iii) None of the electrical, heating or plumbing systems have been tested.