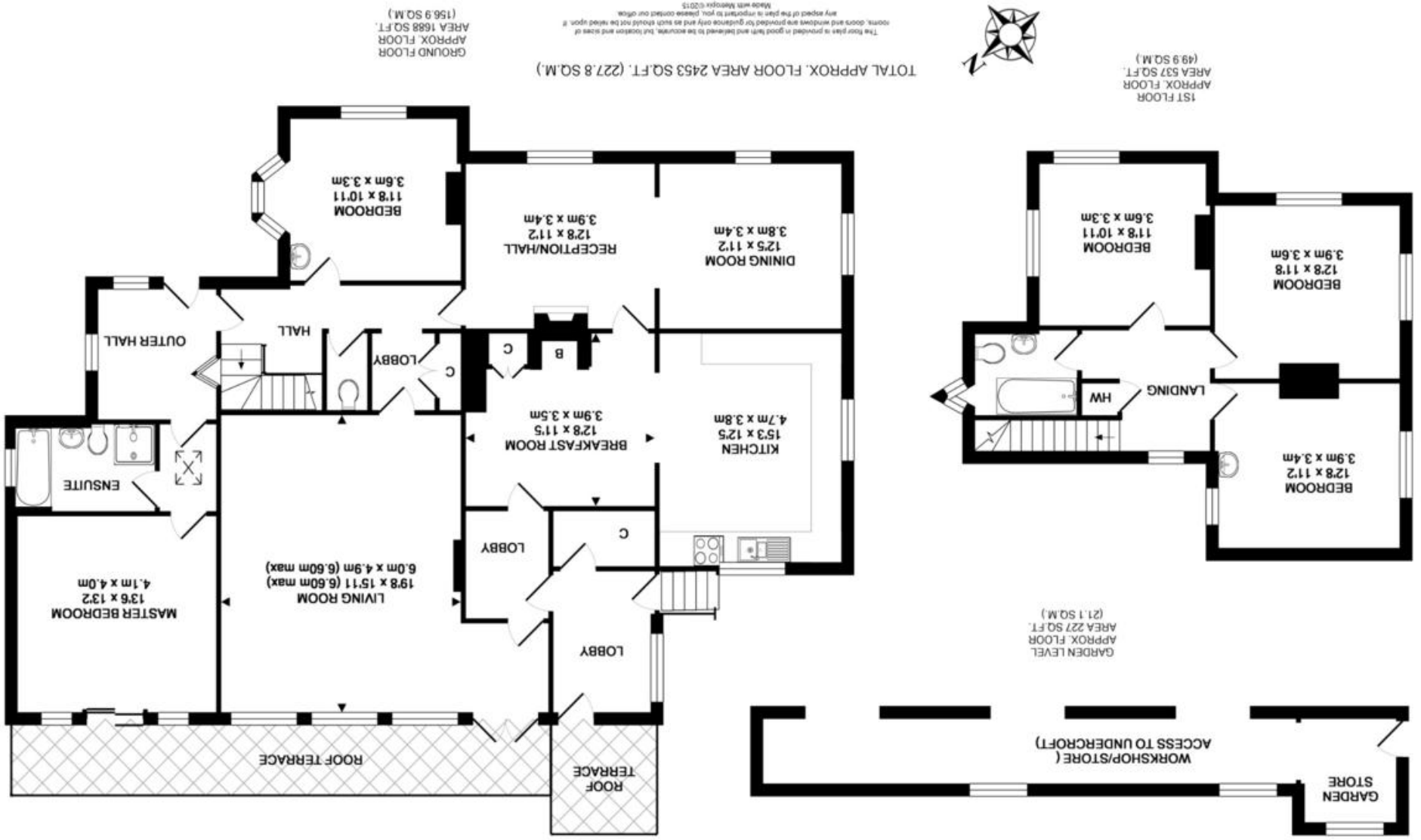


Agents Note: Whilst every care has been taken to prepare these sales particulars, they are for guidance purposes only. All measurements are approximate and for general guidance purposes only and whilst every care has been taken to ensure their accuracy, they should not be relied upon and potential buyers are advised to recheck the measurements.



Fogleigh Lodge, Box Hill, Corsham, Wiltshire, SN13 8ES

Fogleigh Lodge, Box Hill, Corsham, Wiltshire, SN13 8ES

- Five bedroom detached house
- Three reception rooms
- Over three acres of land
- Double garage and parking
- Village location
- Views over Box valley
- Large gardens
- NO ONWARD CHAIN!

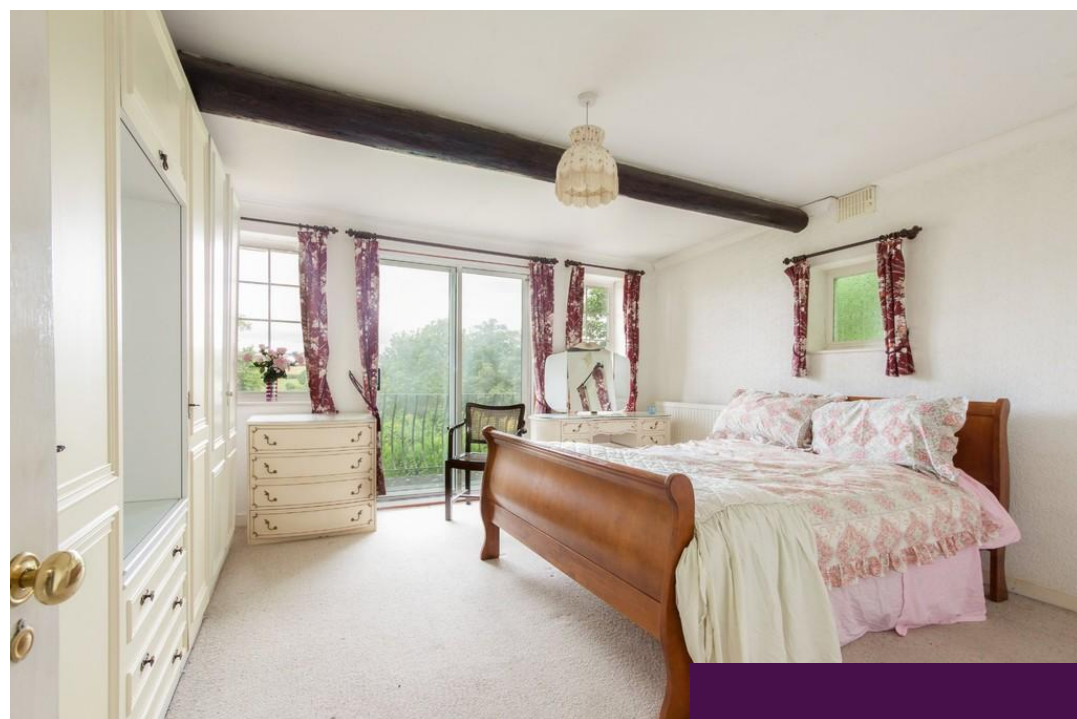
£699,950

Situation and Description

An outstanding opportunity to make your mark on a property that has been a family home for nearly thirty years, Fogleigh Lodge is a five bedroom detached property offering tremendous scope for updating, improvement and extension that is situated on the edge of the incredibly popular village of Box but is positioned to maintain privacy with stunning views over the Box valley. The accommodation sprawls over two floors and briefly comprises; Entrance hall, Living room with doors leading to the terrace, two further reception rooms and a large kitchen breakfast room. Continuing on the ground floor are two good sized double bedrooms, one of which has an en suite bathroom. On the first floor there are three further double bedrooms as well as the family bathroom. Outside the property there is a useful undercroft/workshop space with power as well as a double garage. The large gardens surround the house to the rear and encompass parking for six or seven vehicles. There is also a paddock behind the garden extending in all to approximately three acres.

Box is a particularly sought after village with a strong community spirit and an excellent range of local amenities which include a junior school, village stores, supermarket, pharmacy, traditional butchers, doctors surgery and several public houses. There are numerous footpaths and country walks close by. This thriving village is only c.5 miles from Bath with its extensive cultural, leisure and shopping facilities and restaurants. There are also excellent communication links to London, Bristol and the West Country via the M4 motorway, with high speed rail service to London via Chippenham or Bath.

EPC rating D



Directions

Leave Corsham on the A4 in the direction of Bath. Continue past Rudloe Hall Hotel down the hill towards Box where the property can be found on the right.