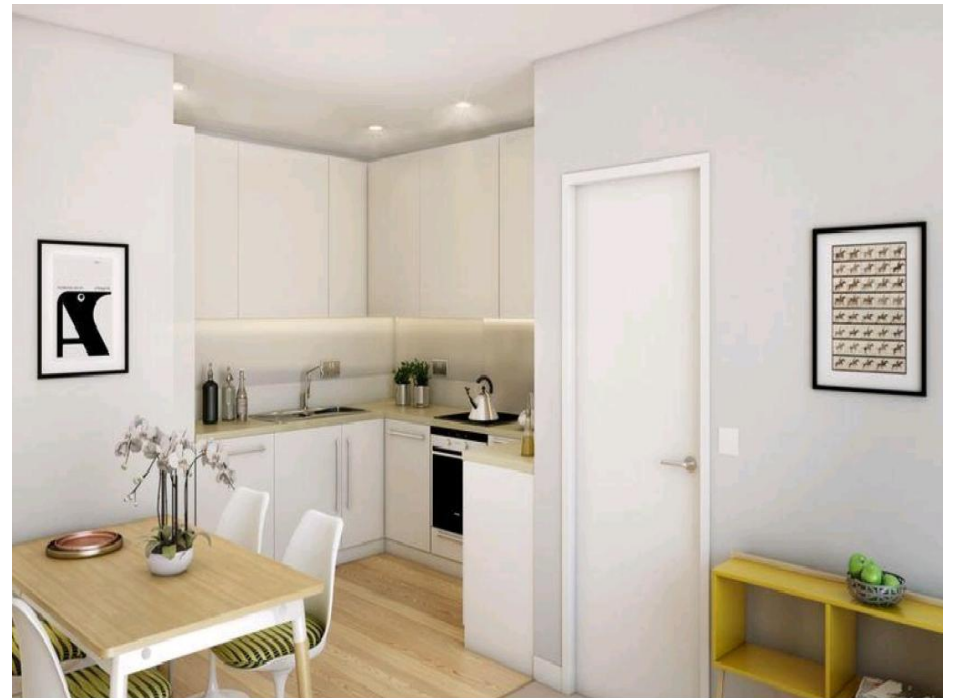




Horizon House, Valentines House, Ilford Hill, Ilford, Essex    **£442,000**









# Horizon House, Valentines House, Ilford Hill, Ilford, Essex

**£442,000**

## Property Description

A selection of two bedroom high specification apartments situated within a stunning new development, the Horizon. Inspired by Ilford's unique place in the history of photography and telecommunications, this luxurious development is located moments from excellent transport links into central London. With apartment accommodation ranging from 872 - 969 sqft, priced between £442,000 - £495,000 and projected gross yields of up to 5.47%, this development offers excellent value for property investors and first time buyers. Please note that all sales particulars and images are for marketing and illustrative purposes only. Advertising images may include upgrades as home specifications can vary. EPC available on completion.

## Our View

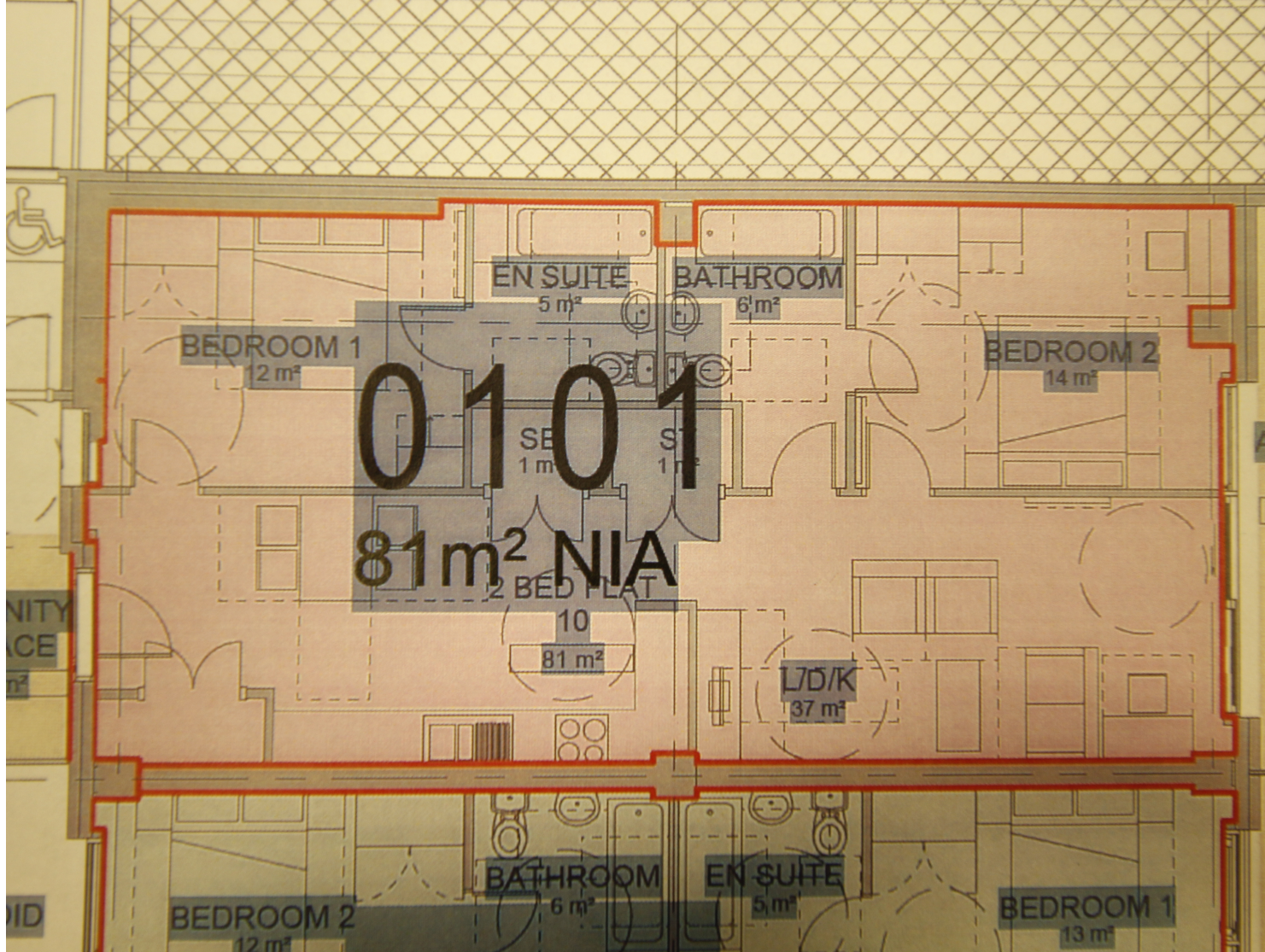
Contact our Forest Gate branch for further information.

## Location

With the introduction of crossrail, Ilford will be one of the stops along the route's eastern section. It is estimated that even more resident's will be attracted to this increasingly popular area, with the town's population forecast to rise a further 22.5% by 2028. The introduction of crossrail will ensure the refurbishment of the existing town centre and shopping centre making it a focal point for the local community.



**EPC Available On Completion**  
**For full EPC please contact the branch**



IMPORTANT NOTE TO PURCHASERS: We endeavour to make our sales particulars accurate and reliable, however, they do not constitute or form part of an offer or any contract and none is to be relied upon as statements of representation or fact. The services, systems and appliances listed in this specification have not been tested by us and no guarantee as to their operating ability or efficiency is given. All measurements have been taken as guide to prospective buyers only, and are not precise. Floor plans where included are not to scale and accuracy is not guaranteed. If you require clarification or further information on any points, please contact us, especially if you are travelling some distance to view. Fixtures and fittings other than those mentioned are to be agreed with the seller.

Your Move is a trading name of your-move.co.uk, registered in England at Newcastle House, Albany Court, Newcastle Business Park, Newcastle upon Tyne NE4 7YB (number 01864469).

\*Calls may be recorded and/or monitored for training and/or security purposes.

176 Forest Lane, London, E7 9BB

0208 534 1147 \* ForestGate@your-move.co.uk

