




Andrew Pearce
PINNER

WEST END COURT , WEST END AVENUE, PINNER HA5 1BP **£450,000**



A highly desirable two bedroom maisonette with bundles of character and charm placed in this ultra-convenient location and offered for sale with a completed onward chain.

Location

West End Court is wonderfully positioned within a very short walk of Pinner Village with its vast array of shopping and transport links including the Metropolitan Line Station offering easy access to Central London in less than 30 minutes. The area's leading & outstanding ofsted rated school West Lodge is within a very short walk.

Accommodation

Stairs to the first floor, spacious landing with ceiling spotlights and wood flooring, lounge & dining room with a large bay window to the front aspect and a feature fireplace, beautifully fitted kitchen with a range of wall and base units, breakfast bar and a door leading to a staircase to your own garden. Two large double bedrooms and a very well appointed bathroom suite.

Outside

To the rear is a private garden which is paved and has a large store room.

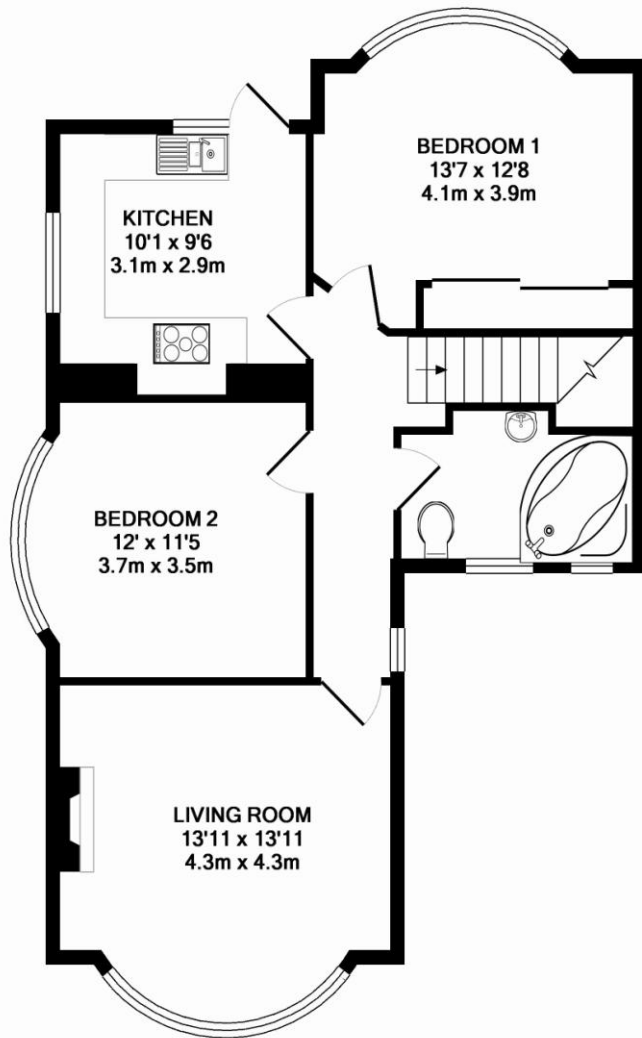
Garage

Located in a small block within a short walk of the property.

Lease terms

The property is sold with a 999 year lease and a Share in the freehold. Service charges are £489pa and there is no ground rent.





ENTRANCE FLOOR
APPROX. FLOOR
AREA 37 SQ.FT.
(3.5 SQ.M.)

1ST FLOOR
APPROX. FLOOR
AREA 713 SQ.FT.
(66.3 SQ.M.)

TOTAL APPROX. FLOOR AREA 751 SQ.FT. (69.7 SQ.M.)

Whilst every attempt has been made to ensure the accuracy of the floor plan contained here, measurements of doors, windows, rooms and any other items are approximate and no responsibility is taken for any error, omission, or mis-statement. This plan is for illustrative purposes only and should be used as such by any prospective purchaser. The services, systems and appliances shown have not been tested and no guarantee as to their operability or efficiency can be given
Made with Metropix ©2016

