

Entrance
Double glazed door into:

Double glazed window to front, radiator, ceiling mounted light point

Porch
Wooden door into:

Bedroom Two 8'1" x 11'9" (2.46m x 3.58m)
Double glazed window to rear, radiator, ceiling mounted ceiling point, storage cupboard

Lounge/Diner 11'8" x 9'2" (3.56m x 2.79m)
Radiator, double glazed window to front, television point, laminate flooring, two wall mounted points, stairs to first floor, door to:

Bathroom
Panel bath with shower over, low level WC, pedestal hand wash basin, ceiling mounted light point, extractor fan

Kitchen 12' x 8'1" (3.66m x 2.46m)
Double glazed window to rear, double glazed door to rear, space for cooker, space for fridge/freezer, space for washing machine, stainless steel sink and drainer unit with mixer tap, matching range of wall and base units, tiled flooring, ceiling mounted lighting point, boiler

Rear Garden
Access via kitchen, rear decked area, lawn and gravel areas, shed, gate to rear

Front Garden
Lawn area, pathway to front door

First Floor Landing
Loft hatch, doors to:

Bedroom One 11'8" x 10'6" (3.56m x 3.20m)



Office

1 Fore Street
Torpoint
Cornwall
PL11 2AA

01752 812 333

www.idealhomes-sw.co.uk

Energy Efficiency Rating		Current	Potential
Very energy efficient - lower running costs			
(92+)	A		92
(81-91)	B		
(69-80)	C	75	
(55-68)	D		
(39-54)	E		
(21-38)	F		
(1-20)	G		

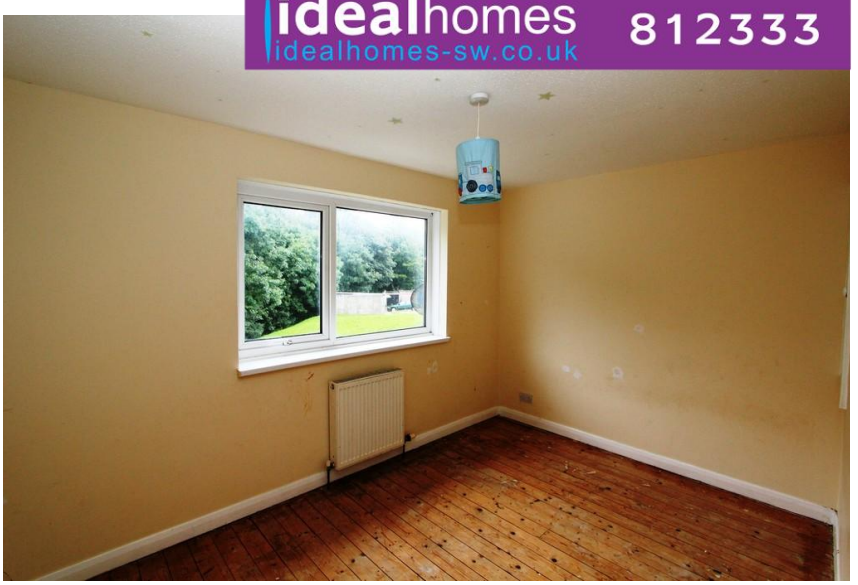


Davy Close, Torpoint PL11 2NQ - £130,000

GREAT FIRST TIME BUY! Two bedroom mid terrace home, situated in popular cul-de-sac location, backing on to woodland. Within a short walk to local convenience store and bus stops. Comprising; lounge/diner, kitchen/breakfast room, two double bedrooms, bathroom, gardens and garage. EPC C.



Davy Close, Torpoint PL11 2NQ - £130,000



- TWO DOUBLE BEDROOMS
- CUL-DE-SAC
- GARAGE
- GARDENS
- GREAT FIRST TIME BUY
-
-
-



10% marketing fee*
zero month contract
advertising on rightmove,
zoopla, primelocation & more.
open 7 days a week
8 til 8 opening hours
prominent high street display
epcs available

**These particulars are a guide only and should not be relied upon for any purpose*