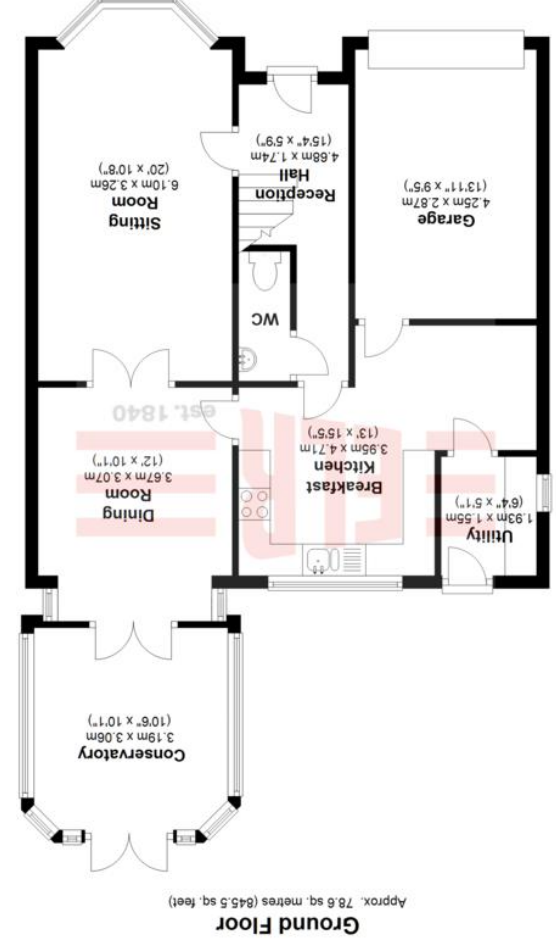
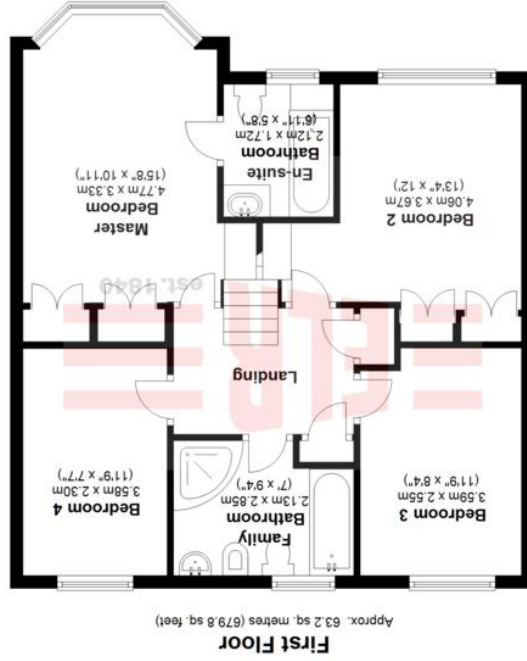




offices also at Bakedwell, Banner Cross and Hathersage

Whilst every effort has been made to ensure the accuracy of the floorplan this plan is for reference only to location of rooms and property layout for detailed measurements please refer to the brochure or advice from the marketing agent. UK Energy Assessors Ltd accept no responsibility for measurements and Gross areas of a property they have not visited.
Plan produced using Planlup.

Total area: approx. 141.7 sq. metres (1525.3 sq. feet)



SUPERB CORNER LOCATION...

ELR are pleased to bring to the market another 4 bedroom detached executive style home upon this ever desirable area of Ravenfield. Nestling into a bottom corner and with the open fields to the side we expect a lot of interest on this property so call now to arrange a viewing!

The property is approached via a spacious driveway for several vehicles and the front garden wraps around the side of the house to the rear garden where the fantastic open views are enjoyed. Internally are 3 reception rooms & a Breakfast kitchen with utility room leading off & courtesy door to garage. There is an en suite bathroom to Bedroom 1 together with fitted wardrobes & 3 other good size bedrooms. An attractive 5 piece white Bathroom suite concludes the first floor accommodation. A sophisticated alarm system with external security beam is included in the sale together with CCTV. The open Countryside is just a few minutes drive away together with various shops.



EADON LOCKWOOD & RIDDLE
SALES • LETTINGS • SURVEYS

- A 4 bedroom detached House
- Stunning open aspect to the side
- Gardens to three sides
- Rear garden enjoying open aspect over fields
- Rear conservatory
- Breakfast Kitchen with Utility Room off
- 2 further reception rooms
- En suite bathroom to the main bedroom
- Integral garage & spacious driveway
- Early viewing highly recommended

