



Steeple Aston
Oxfordshire

Steeple Aston Oxfordshire

A Charming Character Cottage Offering Spacious Accommodation With Striking Gardens In This Sought After Village.

The property briefly comprises:
Entrance Hall, Kitchen/Dining Room, Sitting Room, Garden Room, Utility Room, Split First Floor Landing, Bathroom, Three Bedrooms and Additional Bathroom.

Outside the garden is split over two levels.

Upper Level: Fully Enclosed, Laid to Lawn, Mature Trees, Borders with Shrubs and Flowers, Storage Shed.

Lower Level: Walled Patio, Laid to Lawn.

The Property benefits from an Over-Sized Garage.

Steeple Aston is a sought after village boasting a Village Store and Post Office, The Red Lion Public House and a C of E Primary School. Country walks can also be enjoyed within the neighbouring fields.

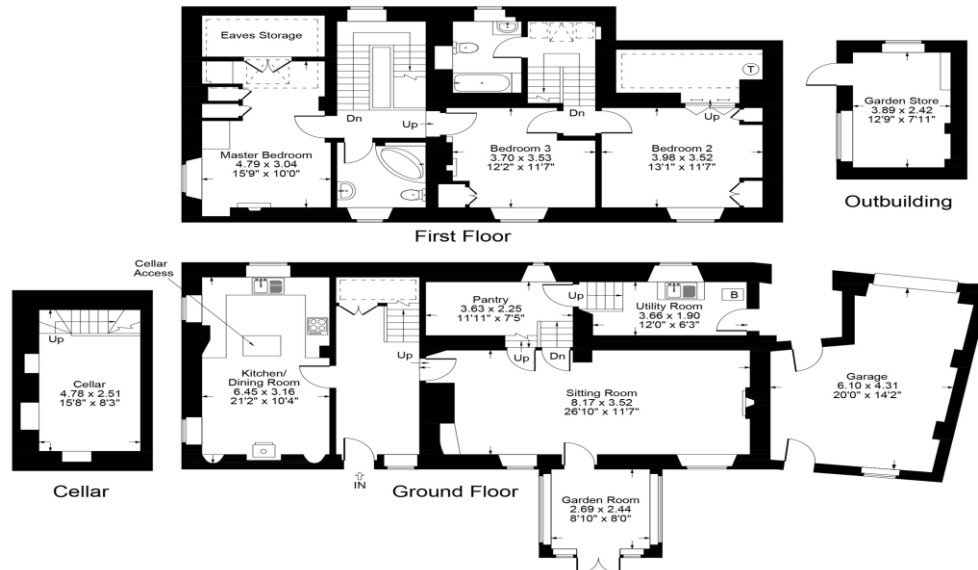




- Entrance Hall
- Kitchen / Dining Room
- Sitting Room
- Garden Room
- Utility Room
- Split Level First Floor Landing
- Three Bedrooms
- Two Bathrooms
- Split Level Garden
- Over-Sized Garage
- Period Features



Guide Price: £640,000



Approximate Gross Internal Area = 183.82 sq m / 1978 sq ft
 Garage = 23.37 sq m / 251.55 sq ft
 Outbuilding = 09.41 sq m / 101.28 sq ft
 Total Area = 216.60 sq m / 2240.83 sq ft

Illustration for identification purposes only,
 measurements are approximate, not to scale.

Local Authority
 Cherwell District Council

Tenure
 Freehold

Additional Information
 Bicester c. 8 miles
 Banbury c. 10 miles
 Chipping Norton c. 11 miles
 Oxford c. 15 miles
 Birmingham c. 61 miles
 London c. 68 miles

M40 J10 c. 8 miles

London via Bicester North, c. 1hour

Oxford to London Paddington 59
 minutes.

Mark David
 ESTATE AGENTS

Market House, Market Square, Deddington, Oxfordshire, OX15 0SB
 Tel: 01869 338898
 Fax: 01869 338337
 Email: deddington@mark-david.co.uk
 www.mark-david.co.uk

Important Notice

Mark David Estate Agents for themselves and their clients give notice that:-

1. They are not authorised to make or give representation or warranty in relation to this property, either on their own behalf or on behalf of the Seller. They assume no responsibility for any statement made in these particulars. These particulars do not form part of any offer or contract and must not be relied upon as statements or representations of fact.
2. Whilst every attempt has been made to ensure the accuracy of the floorplan contained here, measurements of doors, windows, rooms and any other items are approximate and no responsibility is taken for any error, omission, or mis-statement.
3. All areas, measurements or distances are approximate. The particulars are intended for guidance only and are not necessarily comprehensive. A wide angle lens may have been used in photography. Mark David Estate Agents have not tested appliances or services and it should not be assumed that the property has all necessary planning, building regulation and other consents. Buyers must satisfy themselves with the property by inspection or otherwise.
4. Reference to any mechanical or electrical equipment does not constitute a representation that such equipment is capable of fulfilling its function and prospective Buyers must make their own enquiries.
5. They have no responsibility for any expenses or costs incurred by prospective Buyers in inspecting properties which have been sold, let or withdrawn. Applicants are advised to contact the Agent to check availability and any other information of particular importance to them, prior to inspecting the property, particularly if traveling some distance.