

Asking Price Of **£110,000**

tel: **01442 214151**



St. Albans Hill, Hemel Hempstead HP3 9JW

SALE BY TENDER - Clements Estate Agents are delighted to offer this VALUE FOR MONEY first floor studio apartment set in this convenient location set close to good local restaurants, shops and amenities. The property offers spacious room sizes, double glazing, gas central heating and the additional benefit of NO UPPER CHAIN. Buyers fees Apply.

- STUDIO APARTMENT
- FIRST FLOOR
- GOOD DECORATIVE ORDER
- POPULAR LOCATION
- CLOSE TO AMENITIES



Property Description

SALE BY TENDER - Clements Estate Agents are delighted to offer this VALUE FOR MONEY first floor studio apartment set in this convenient location set close to good local restaurants, shops and amenities. The property offers spacious room sizes, double glazing, heating & the additional benefit of NO UPPER CHAIN. Buyers fees Apply.

COMMUNAL ENTRANCE

External communal staircase leading to a double glazed front door.

ENTRANCE HALLWAY

Feature tiled flooring, doors to:

STUDIO ROOM 16' 7" x 10' 8" (5.05m x 3.25m)

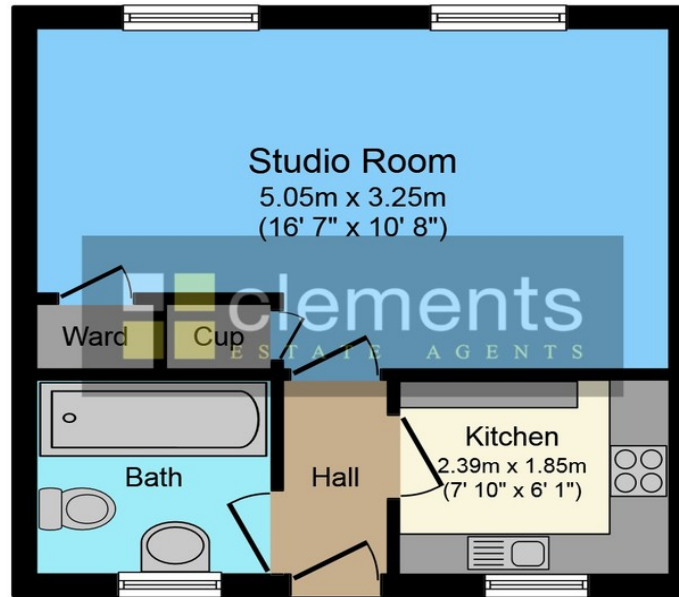
A good sized studio room comprising a double glazed window to front, a feature fireplace with electric fire, a built wardrobe and cupboard, fitted carpet, two wall mounted radiators, TV point.

KITCHEN 7' 10" x 6' 1" (2.39m x 1.85m)

Comprising a range of wall and floor mounted units with roll top work surfaces and inset sink with drainer, built in oven with gas hob and extractor hood above, plumbing for washing machine, wall mounted boiler, part tiled walls, double glazed window to front.

BATHROOM

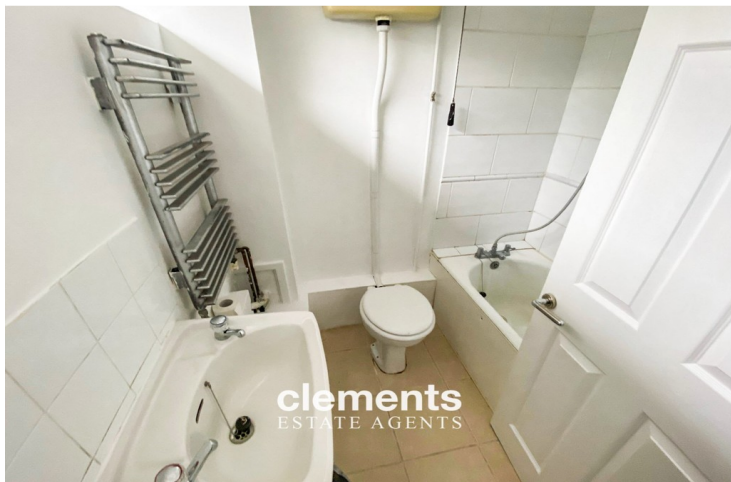
Comprising a panel enclosed bath with a shower attachment, wash hand basin, low level WC, heated towel rail, frosted double glazed window to front, part tiled walls.



Floor area 29.1 sq. m. (313 sq. ft.) approx

Total floor area 29.1 sq. m. (313 sq. ft.) approx

This Floor Plan is for illustration purposes only and may not be representative of the property. The position and size of doors, windows and other features are approximate. Unauthorized reproduction prohibited. © PropertyBOX



Tenure **Leasehold**

Council Tax Band

Viewing Arrangements **Strictly by appointment**

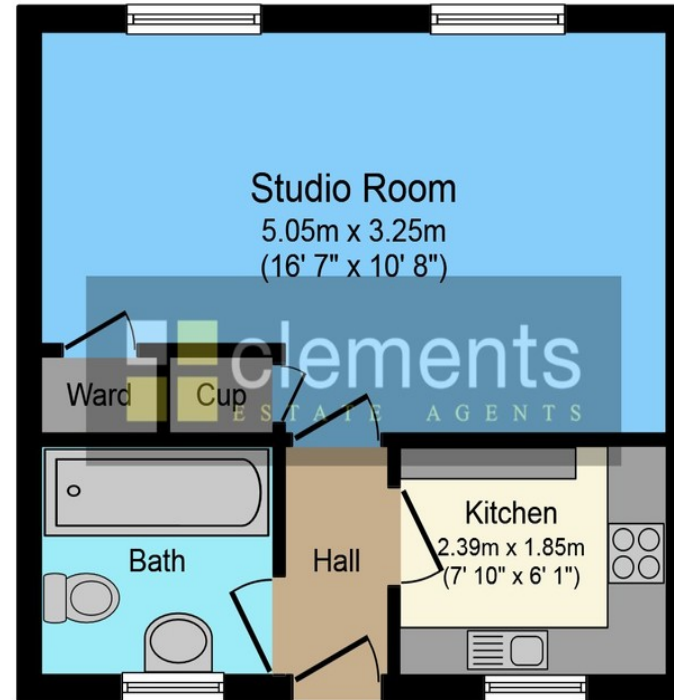
Contact Details

142 Marlowes
Hemel Hempstead
Hertfordshire
HP1 1EZ

Email: sales@clementsestateagents.co.uk

Tel: 01442 214151

www.clementsestateagents.co.uk



Floor area 29.1 sq. m. (313 sq. ft.) approx

Total floor area 29.1 sq. m. (313 sq. ft.) approx

This Floor Plan is for illustration purposes only and may not be representative of the property. The position and size of doors, windows and other features are approximate. Unauthorized reproduction prohibited. © PropertyBOX

Agents Note: Whilst every care has been taken to prepare these sales particulars, they are for guidance purposes only. All measurements are approximate and are for general guidance purposes only and whilst every care has been taken to ensure their accuracy, they should not be relied upon and potential buyers are advised to recheck the measurements