



Home Park,
Oxted,
RH8 0JS

Guide price of £415,000



2



1



1

Robert
Leech.



Home Park, Hurst Green, RH8 0JS

This well maintained end of terrace property is located in a popular road within walking distance of Hurst Green Mainline Station. With solid oak flooring throughout the ground floor offers open plan living with living space to the front and dining area with to the rear with sliding doors leading to the garden. A recently refurbished fitted kitchen including base and wall units, space for an oven, washing machine, dishwasher and fridge freezer. To the rear there is a conservatory with views over the garden.

Upstairs there are two double bedrooms, both of which benefit from built in wardrobes and a modern family bathroom complete with over the bath shower, vanity unit hand basin, towel rail and W/C. There is also access to a boarded loft offering ample storage.

Outside there is ample off road parking to the front and side access to a good sized rear garden with patio area and shed to the back of a large lawn.

- Freehold
- Built 1960s
- 2 Beds, 1 Bath, 1 Recep and conservatory
- Quiet cul-de-sac location
- 0.4 miles from Hurst Green Station
- Garage en-bloc
- Private garden
- Living space 926 sq ft
- Tandridge District Council
- Council tax band D (£2,162.77pa)



1.4 miles
Oxted



13.3 miles
Gatwick
Airport



0.4 miles
Hurst Green
Station



OXTED
72 Station Road East,
Oxted,
Surrey RH8 0PG
01883 717272

REIGATE
1-3 High Street,
Reigate,
Surrey RH2 9AA
01737 246246

LINGFIELD
27 High Street,
Lingfield,
Surrey RH7 6AA
01342 837783

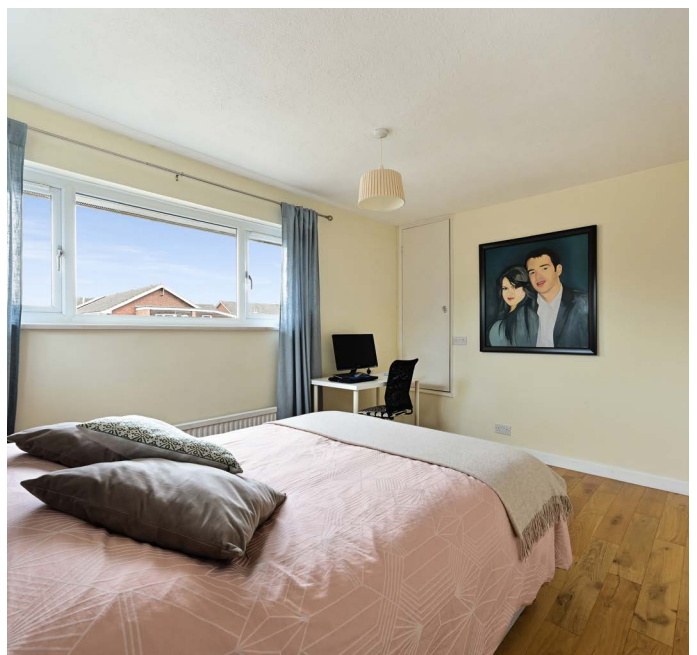
LONDON
121 Park Lane
London
W1K 7AG
0207 0791457



LOCATION AND TRAVEL

Situated in Hurst Green village and just 0.4 miles from the mainline station. Oxted is approximately 1 mile away, which boasts the ever popular Master Park offering year round events. The town includes a Leisure complex with swimming pool, theatre, independent boutique cinema and a range of shops including a Morrisons and a Waitrose.

Junction 6 is approximately 4 miles away providing easy access to the M25 and Gatwick airport. Hurst Green mainline railway station provides fast trains to East Croydon (from 21 minutes), London Bridge (from 37 minutes), London Victoria (from 45 minutes) and London St Pancras International (from 56 mins)

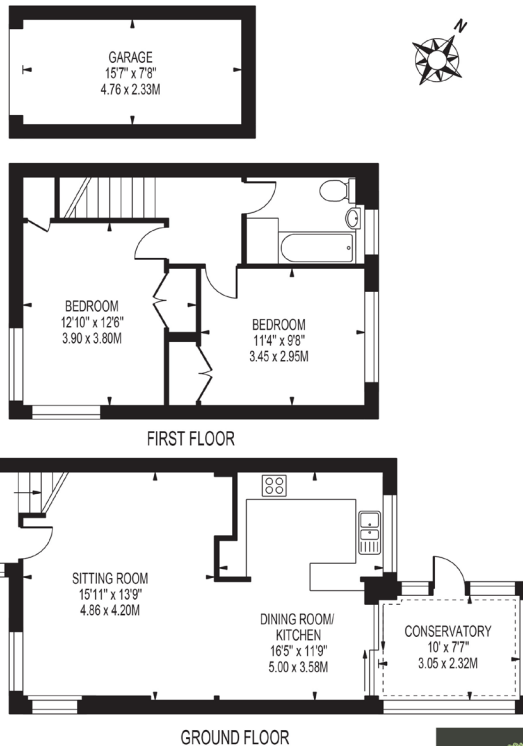




HOME PARK

APPROXIMATE GROSS INTERNAL FLOOR AREA: 926 SQ FT - 86.03 SQ M
(EXCLUDING GARAGE)

APPROXIMATE GROSS INTERNAL FLOOR AREA OF GARAGE: 119 SQ FT - 11.09 SQ M



FOR ILLUSTRATION PURPOSES ONLY



THIS FLOOR PLAN SHOULD BE USED AS A GENERAL OUTLINE FOR GUIDANCE ONLY AND DOES NOT CONSTITUTE IN WHOLE OR IN PART AN OFFER OR CONTRACT.
ANY INTENDING PURCHASER OR LESSEE SHOULD SATISFY THEMSELVES BY INSPECTION, SEARCHES, ENQUIRIES AND FULL SURVEY AS TO THE CORRECTNESS OF EACH STATEMENT.
ANY AREAS, MEASUREMENTS OR DISTANCES QUOTED ARE APPROXIMATE AND SHOULD NOT BE USED TO VALUE A PROPERTY OR BE THE BASIS OF ANY SALE OR LET.

DISCLAIMER. PROPERTY MISDESCRIPTIONS. Whilst every attempt has been made to ensure accuracy of the property details, no responsibility is taken for error, omission or mis-statement. The Agent has not yet tested any apparatus, equipment, fixtures and fittings or services and so cannot verify that they are in working order or fit for the purpose. A buyer is advised to obtain verification from their Solicitor or Surveyor. References to the Tenure of a property are based on information supplied by the Seller. The agent has not had sight of the title documents.

