



CHISWELL & CO
RESIDENTIAL SALES & LETTINGS

8 ANGLESEA TERRACE, SOUTHAMPTON, SO14 5BL
ASKING PRICE OF £127,500





NEW INSTRUCTION - Chiswell & Co are delighted to offer for sale this Town Centre one bedroom 5th floor apartment with parking. The property benefits from being close to Town centre shops and main bus routes. The property also benefits from secure gated parking.

LOUNGE/KITCHEN

11' 10" x 10' 3" (3.63m x 3.14m)

BEDROOM

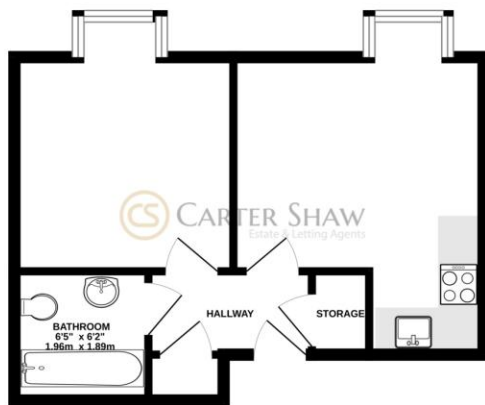
10' 3" x 10' 3" (3.14m x 3.14m)

BATHROOM

6' 0" x 5' 10" (1.83m x 1.79m)



GROUND FLOOR
359 sq.ft. (33.4 sq.m.) approx.



TOTAL FLOOR AREA: 359 sq.ft. (33.4 sq.m.) approx.
While every effort has been made to ensure the accuracy of the floorplan, measurements are approximate and should not be relied upon for legal purposes. The plan is for guidance only and does not constitute an offer of any property. All dimensions are approximate and should not be relied upon for legal purposes. All dimensions are approximate and should not be relied upon for legal purposes. All dimensions are approximate and should not be relied upon for legal purposes.

%epcGraph_c_1_304%