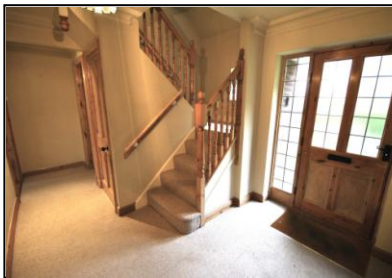


PORTFIELD

GARRARD & WRIGHT

INDEPENDENT ESTATE AGENTS • SURVEYORS & VALUERS RESIDENTIAL LETTING AGENTS • NEW HOME SALES

31 The Avenue, Bessacarr



A deceptively spacious 3 double bedroom detached dormer bungalow having quality fixtures and fittings, situated along this popular roadside, gas heating, double glazing, garage and gardens to the front and rear with a driveway. The property comprises of ; entrance hallway, dual aspect lounge, dining room, kitchen, bedrooms with ensuite shower room, landing, two double bedrooms and a bathroom. Viewing highly recommended.

Offers In Region Of £338,000