



Davis Street

£135,000

- End of Terrace Property
- Three Bedrooms & Bathroom
- Two Receptions & Kitchen
- Large Garden To Rear
- Close To Amenities
- EPC Rating: E



 3  1  2



About the property

A large garden is available on this end of terraced property, with the summer months coming this could be a huge benefit to families. With easy access to the local amenities, schools and transport links. Two reception rooms, bathroom, kitchen and three bedrooms.

Accommodation

Living Room

15' x 11' 7" (4.57m x 3.53m)

Entered via front door. Stairs to the first floor. Window to the rear and to the side. Fire surround.

Lounge

15' x 10' (4.57m x 3.05m)

Window to the front and french doors to the rear garden. Open fire place.

Bathroom

9' x 6' 8" (2.74m x 2.03m)

Suite comprising contemporary bath, wash hand basin and Wc. Provision for shower cubicle. Window to the side.



Kitchen

11' 2" x 8' 1" (3.40m x 2.46m)

Window to the front. Range of units with provision for range style cooker.

Landing

Window to the rear. Access to the three bedrooms. Airing cupboard housing the boiler.

Bedroom One

10' x 9' 9" (3.05m x 2.97m)

Window to the front

Bedroom Two

11' 5" x 7' 5" (3.48m x 2.26m)

Window to the front

Bedroom Three

8' 4" x 7' 3" (2.54m x 2.21m)

Window to the rear

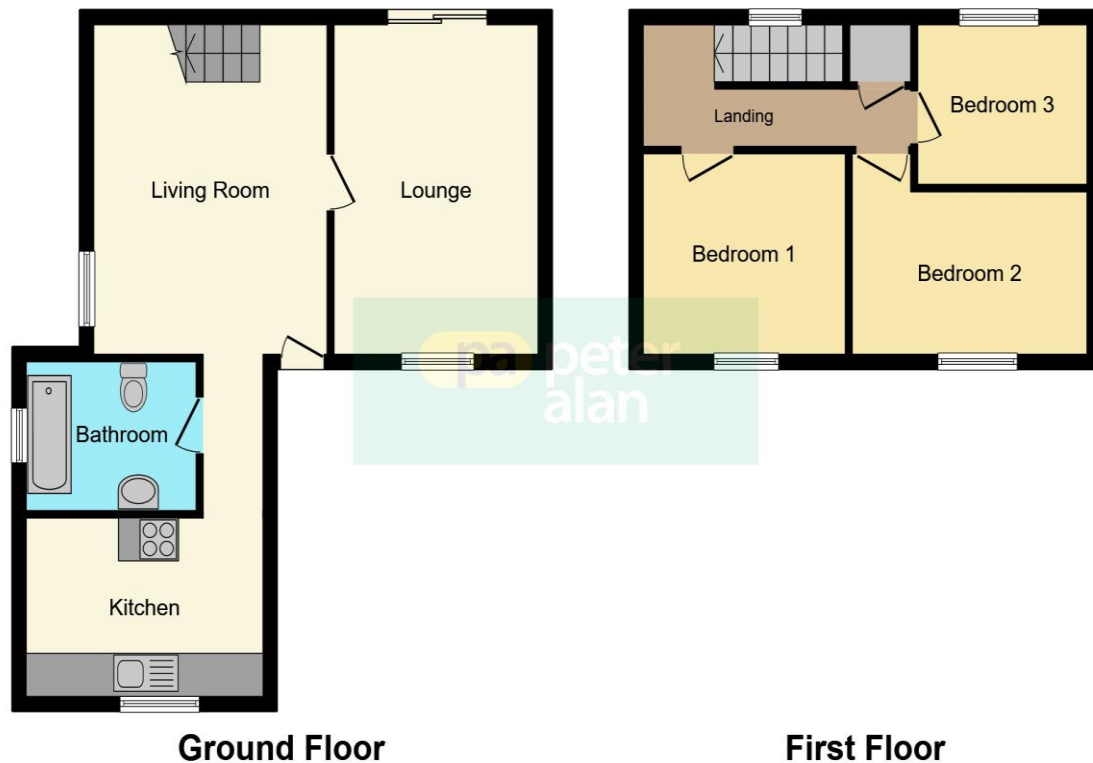
External

Raised garden to the rear laid to lawn with potential for parking to the far end. Courtyard frontage.

01792 798201

morrison@peteralan.co.uk

Floorplan



This floorplan is for illustrative purposes only and is not drawn to scale. Measurements, floor-areas, openings and orientations are approximate. They should not be relied upon for any purpose and do not form any part of an agreement. No liability is taken for any error or mis-statement. All parties must rely on their own inspections.

Important Information

Note while we endeavour to make our sales details accurate and reliable, if there is any point which is of particular interest to you, please contact the office and we will be pleased to confirm the position for you. We have not personally tested any apparatus, equipment, fixtures, fittings or services and cannot verify they are in working order or fit for their purposes. Nothing in these particulars is intended to indicate that carpets or curtains, furnishings or fittings, electrical goods (whether wired or not). Gas fires or light fittings or any other fixtures not expressly included form part of the property offered for sale. This computer generated Floorplan, if applicable, is intended as a general guide to the layout and design of the property. It is not to scale and should not be relied upon for dimensions. Tenure: We cannot confirm the tenure of the property as we have not had access to the legal documents. The buyer is advised to obtain verification from their solicitor or surveyor.

Peter Alan Limited is registered in England and Wales under company number 2073153, Registered Office is Cumbria House, 16-20 Hockliffe Street, Leighton Buzzard, Bedfordshire, LU7 1GN. VAT Registration Number is 500 2481 05. For activities relating to regulated mortgages and non-investment insurance contracts, Peter Alan Limited is an appointed representative of Connells Limited which is authorised and regulated by the Financial Conduct Authority. Connells Limited's Financial Services Register number is 302221. Most buy-to-let