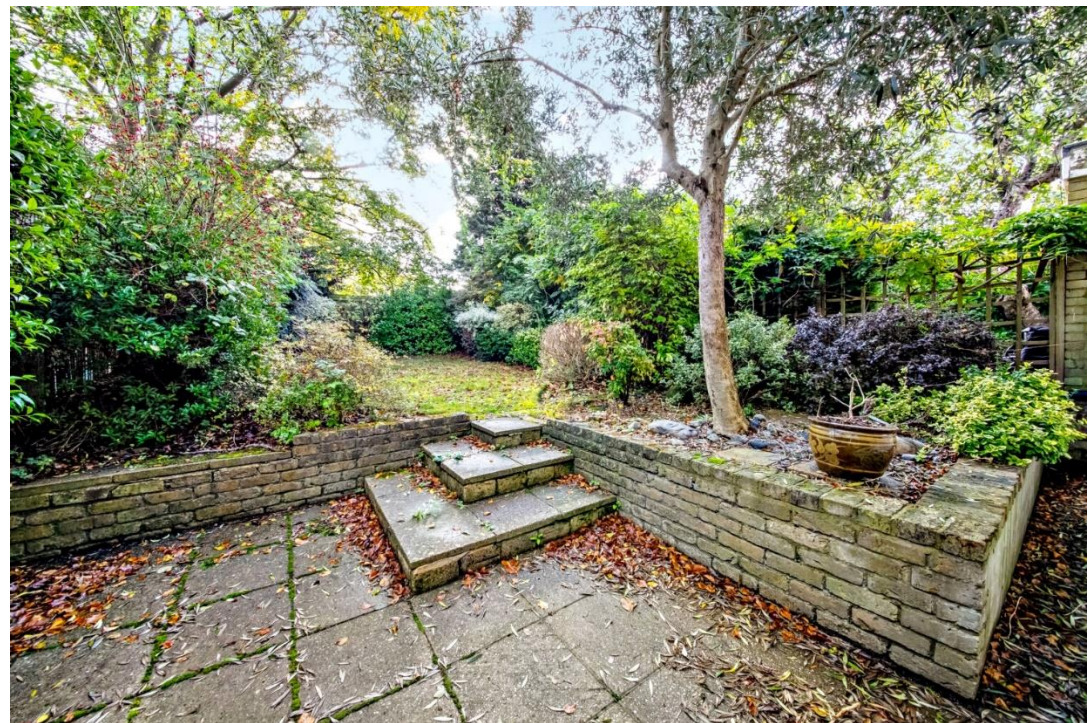




Crescent Wood Road, SE26
£899,950

020 8702 8111
pedderproperty.com

pedder



In general

- A bright and spacious semi-detached house for sale
- Four bedrooms
- Family bathroom
- Large double reception room
- Kitchen, downstairs cloakroom
- Integral garage
- Off street parking
- Mature south facing garden measuring 47'
- Offered with no onward chain

In detail

A bright and spacious semi-detached house for sale situated on this popular residential road running off Sydenham Hill and located just a short distance from the popular Dulwich Woods.

The property has accommodation arranged over two floors comprising four bedrooms, family bathroom, large double reception room, kitchen, downstairs cloakroom and integral garage. Externally to the front there is off street parking and to the rear there is a lovely mature, south facing garden measuring 47'.

The property is situated on this popular residential road running off Sydenham Hill well located for access to Dulwich Village, East Dulwich and Crystal Palace which offer a wide variety of shopping and leisure facilities, excellent schools and popular parks. Rail links to central London are from nearby Sydenham Hill (London Victoria/London Blackfriars), Crystal Palace (London Bridge/London Victoria) and Sydenham (London Bridge/Thameslink).

The property does require modernisation but offers an incoming buyer a unique opportunity to create their ideal family home.

Offered with no onward chain.

EPC: TBC | Council Tax Band: F



Floorplan

Crescent Wood Road, SE26

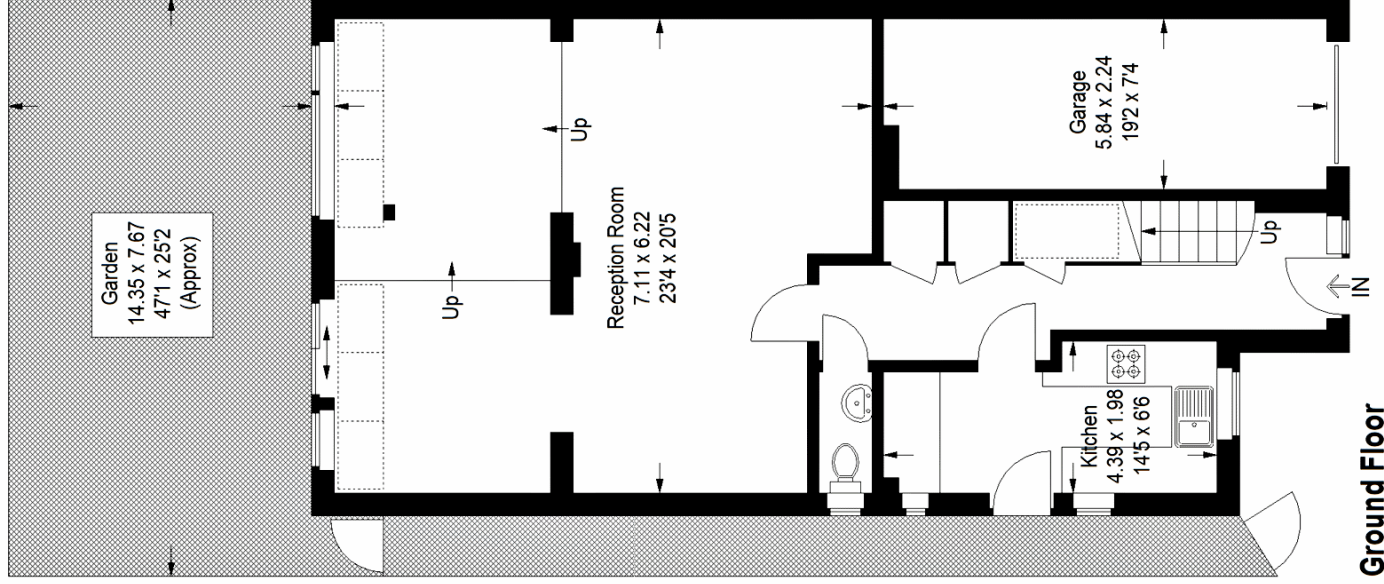
Approximate Gross Internal Area

Ground Floor = 65.0 sq m / 700 sq ft

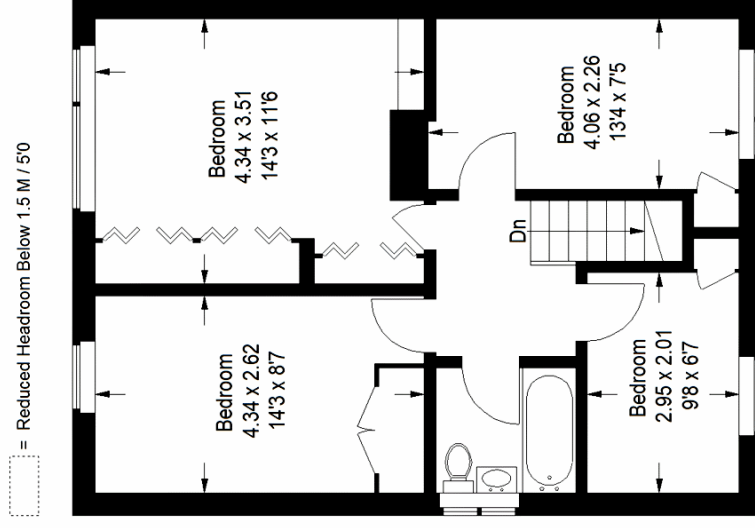
First Floor = 53.1 sq m / 571 sq ft

Garage = 13.3 sq m / 143 sq ft

Total = 131.4 sq m / 1414 sq ft



Ground Floor



First Floor

Copyright www.pedderproperty.com © 2023

These plans are for representation purposes only as defined by RICS - Code of Measuring Practice. Not drawn to Scale. Windows and door openings are approximate. Please check all dimensions, shapes and compass bearings before making any decisions reliant upon them.

Pedder Property Ltd trading as Pedder for themselves and for the vendor/landlord of this property whose agents they are, give notice that (1) these particulars do not constitute any part of an offer or contract, (2) all statements contained within these particulars are made without responsibility on the part of Pedder or the vendor/landlord, (3) whilst made in good faith, none of the statements contained within these particulars are to be relied upon as a statement of representation or fact, (4) any intending purchaser/tenant must satisfy him/herself by inspection or otherwise as to the correctness of each of the statements contained within these particulars, (5) the vendor/landlord does not make or give either Pedder or any person in their employment any authority to make or give representation or warranty whatsoever in relation to this property.