



MILL HOUSE

Fishguard Road | Haverfordwest | Wales | SA62 4BP

FINE & COUNTRY

MILL HOUSE

MILL HOUSE

Grade II Listed, three storey Georgian family home offering a peaceful rural setting, approximately two miles from Haverfordwest, Pembrokeshire's County town. With added benefit of a separate annex (Mill Cottage) currently used as a successful holiday rental and 7 acres of land.

In a serene riverside setting with seven acres of woodlands, paddock and orchard the house has been restored to the highest of standards, retaining original mouldings, fire places, and transforming it into a welcoming and special place to live, with all the comforts of twenty first century living.

The garden is an integral part of the magic of Mill House, and merges from the house into a charming wilderness. It offers so much joyful outdoor activity from fishing, boating, wandering through the orchard and woodland, to watching the abundant bird and wildlife.

The proximity of historic Haverfordwest with its wide range of shops, and a choice of schools, allows the best of town and country living. The owners say they couldn't have had a better place for the children and now grandchildren to grow up. They are sad the time has come to downsize, but they now rattle around in the house. They know the next family will love it as they have.

A few words from the seller;

'Thirty six years ago the Mill was derelict, but we could see the potential and that it could become a superb family home. We fell in love with the serenity of its riverside setting, the Georgian bridge over the mill leat, and the space that the seven acres of woodland, paddock, and orchard. It has been a delightful and happy home.'

The owners enjoy and appreciate every room, and say the green and leafy views across the gardens, from every window, contributes to the positive and inviting atmosphere within the house. 'It has been the perfect place for the family, with room for everyone to come together, and space for individual down time when needed. The attached holiday cottage has been a successful holiday let or somewhere to accommodate overflow guests.'











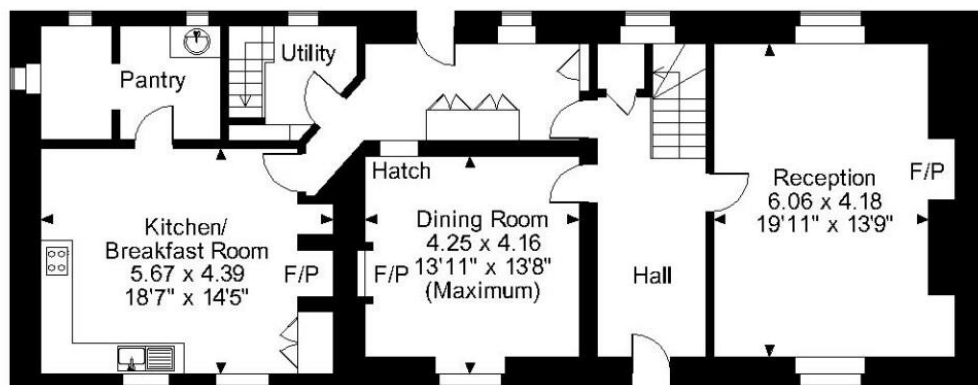
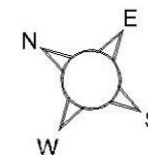
Mill House, Fishguard Road, Haverfordwest

Approximate Gross Internal Area

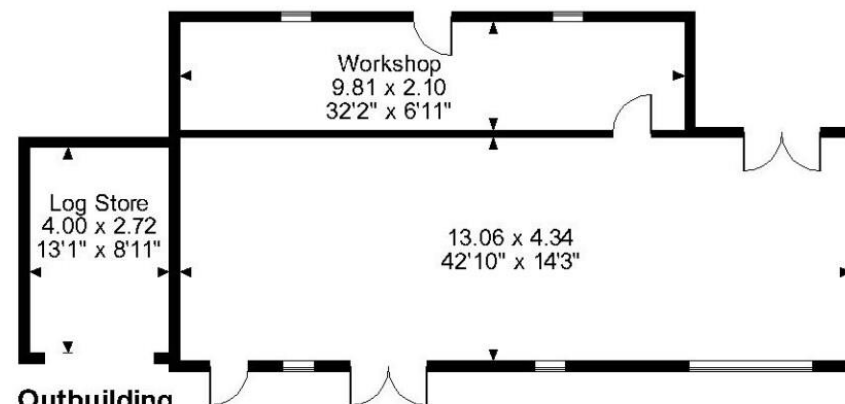
Main House = 2946 Sq Ft/274 Sq M

Workshop = 848 Sq Ft/79 Sq M

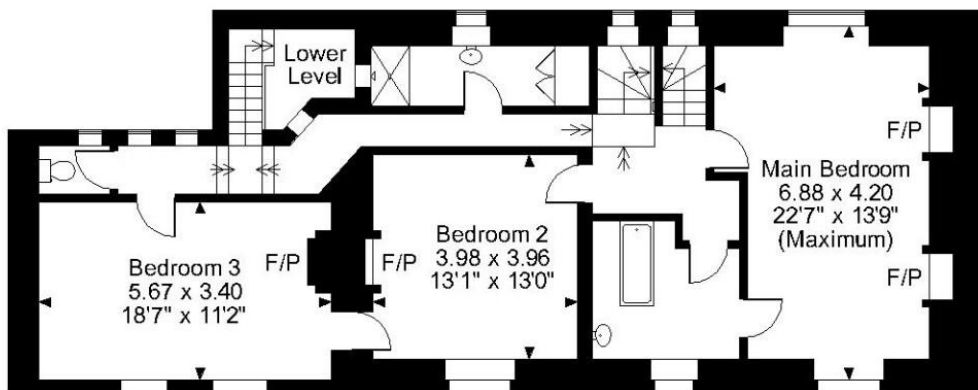
Outbuilding = 117 Sq Ft/11 Sq M



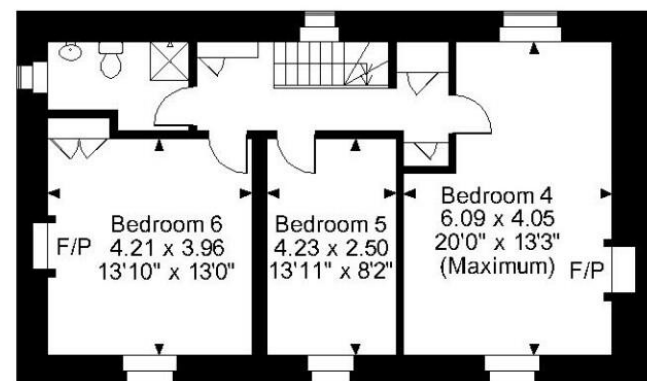
Ground Floor



Outbuilding



First Floor



Second Floor

FOR ILLUSTRATIVE PURPOSES ONLY - NOT TO SCALE

The position & size of doors, windows, appliances and other features are approximate only.

© ehouse. Unauthorised reproduction prohibited. Drawing ref. dig/8521727/SS



Fine & Country West Wales

The Gallery, Station Approach, Station Building, Aberystwyth, SY23 1LH

Tel: 01974 299 055 | nigel.salmon@fineandcountry.com

FINE & **COUNTRY**
fineandcountry.com™