



Boxall Road, SE21
£2,500 PCM

020 8702 8111
pedderproperty.com

pedder

In general

- Two double bedrooms
- Recently renovated
- Charming original features
- Private garden with patio
- Close to North Dulwich Station, shops, and cafes
- Unfurnished
- Available Mid October

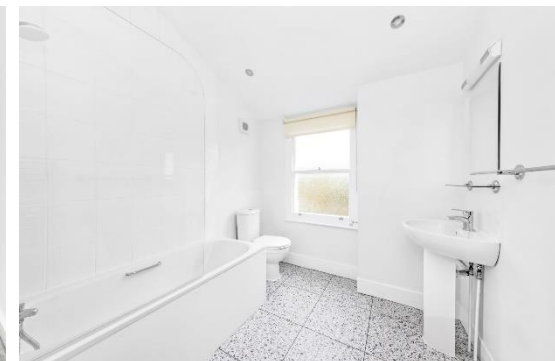
In detail

A modern and characterful two bedroom house to let in Dulwich Village, moments away from shops, cafes, and restaurants.

The house has been recently renovated with a modern bathroom / kitchen, redecorated throughout along with new floor coverings. The downstairs features two reception rooms and the kitchen at the back, leading out on a south facing garden. Upstairs there are two double bedrooms and a bathroom. There is built in storage on both floors and the property has been decorated in neutral style to make the house your own.

The house is well located for schools in Dulwich and good transport links from Herne Hill and North Dulwich Station. Parking available on street.

EPC: D | Council Tax Band: D | Offered Unfurnished | Available Mid October | Holding Deposit: £576.92 | Security Deposit: £2,884.61



Pedder Property Ltd trading as Pedder for themselves and for the vendor/landlord of this property whose agents they are, give notice that (1) these particulars do not constitute any part of an offer or contract, (2) all statements contained within these particulars are made without responsibility on the part of Pedder or the vendor/landlord, (3) whilst made in good faith, none of the statements contained within these particulars are to be relied upon as a statement of representation or fact, (4) any intending purchaser/tenant must satisfy him/herself by inspection or otherwise as to the correctness of each of the statements contained within these particulars, (5) the vendor/landlord does not make or give either Pedder or any person in their employment any authority to make or give representation or warranty whatsoever in relation to this property.