



MILE

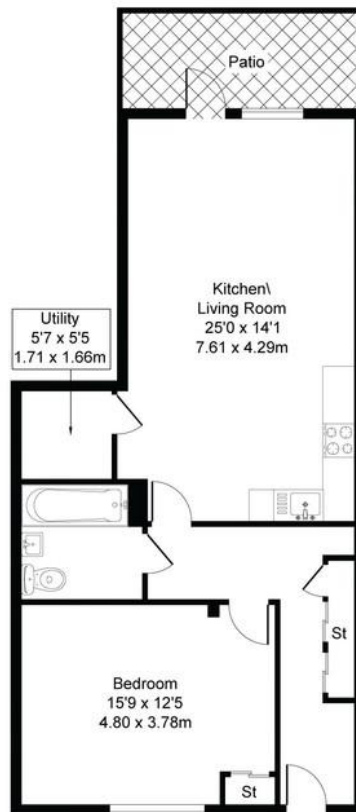


## Silverworks Close, London £387,000 Leasehold

Mile are pleased to offer this HUGE large one bedroom flat for sale. The property consists of a large double bedroom, a family bathroom, a large reception room with an open plan fully fitted kitchen. The property also benefits from a private balcony/patio and also has the square footage of a two bedroom flat. The apartment has been kept in immaculate condition and must be seen to avoid disappointment!!! Located only a minutes walk to ASDA and Morrison's and a short 5 min walk to Colindale Station. This property also has an ESW1 Certificate. EPC Rating B.

- Huge Apartment
- Immaculate condition
- Private balcony / Patio
- EPC Rating B
- 5 Min Walk to Colindale Station
- 2 Min Walk to ASDA and Morrison's
- Size of a Two bed in Square ft.
- MUST BE SEEN
- Fully fitted kitchen
- ESW1 Certificate

Approximate Gross Internal Area  
768 sq ft - 71 sq m



**MONEY LAUNDERING REGULATIONS 2003:** Intending purchasers will be asked to produce identification documentation at a later stage and we would ask for your co-operation in order that there will be no delay in agreeing the sale.

**General:** While we endeavour to make our sales particulars fair, accurate and reliable, they are only a general guide to the property and, accordingly, if there is any point which is of particular importance to you, please contact the office and we will be pleased to check the position for you, especially if you are contemplating travelling some distance to view the property.

**Measurements:** These approximate room sizes are only intended as general guidance. You must verify the dimensions carefully before ordering carpets or any built-in furniture.

**Services:** Please note we have not tested the services or any of the equipment or appliances in this property, accordingly we strongly advise prospective buyers to commission their own survey or service reports before finalising their offer to purchase.