

**Head Office:**  
Dixon Kelley Estate Agents  
1 Penn Court  
Station Road, West Moors  
Dorset. BH22 0JJ

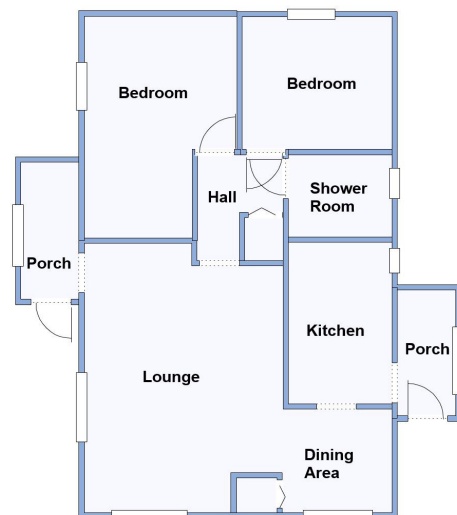
**Telephone: 01202 877511**

# DORSET PARK HOMES

**DRAFT**

[www.dorsetparkhomes.com](http://www.dorsetparkhomes.com)

**191 Central Drive, Oaktree Park, St Leonards, Ringwood. BH24 2RX**



This drawing has been prepared for diagrammatic purpose only. Not to scale.

## 2-Bedroom Park Home - approx 32' x 20'

**Accommodation & approximate room dimensions:**

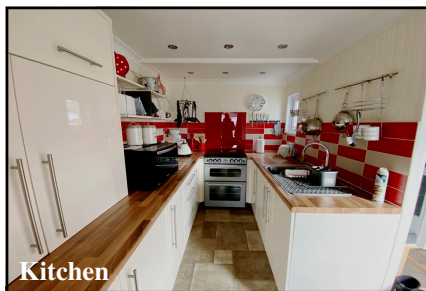
- Stately Woburn
- Entrance Porch
- Lounge/Dining Room: approx 16'9" x 19' overall. Feature fireplace. 2 bay windows. Storage cupboard
- Kitchen: approx 10'2" x 6'7". Modern fitted kitchen with good range of floor and wall cupboards. Space for cooker. LED spot lights. Opening to:
- Rear Porch: Space for washing machine & fridge/freezer. Door to garden.
- Inner Hall: Cupboard housing gas boiler.
- Bedroom 1: approx 13'9" x 9'3" overall max.
- Bedroom 2: approx 9'3" x 8'4"
- Shower Room: Modern 'wet room' style shower, wash basin & WC.
- Gas Central Heating (system untested)
- PVCu Double-Glazing
- Delightful wrap round Garden with artificial lawn & 2 Metal Sheds
- Parking on Plot
- Age Restriction 50+ Pets Considered
- Well maintained Residential Park with popular members club.

**Price: £100,000**

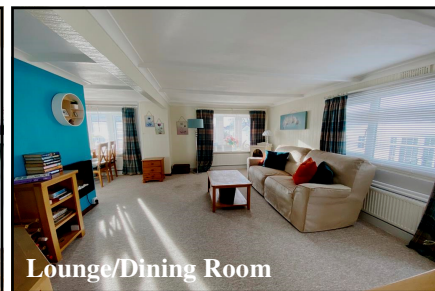
**VIEWING STRICTLY BY APPOINTMENT WITH THE VENDOR'S AGENT Dorset Park Homes 01202 877511**

**IMPORTANT NOTE:** These particulars are believed to be correct but their accuracy is not guaranteed. They do not form part of any contract. Nothing in these particulars shall be deemed to be a statement that the property is in good structural condition or otherwise, nor that any of the services, appliances, equipment or facilities are in good working order or have been tested. Purchasers should satisfy themselves on such matters prior to purchase Ref.W04944

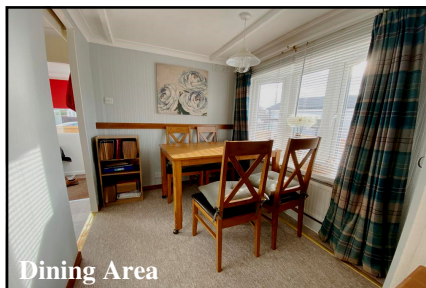
## Low Maintenance Garden



Kitchen



Lounge/Dining Room



Dining Area



Delightful Garden

**Pitch Fee: approx £216.57 per month**

**Subject to Annual Review**

**Council Tax Band: 'A'**

**Tenure: 1983 Mobile Homes Act Agreement**

*The recommended specialist in Park Home sales*  
Partner: Simon Dixon

