

Plot 7

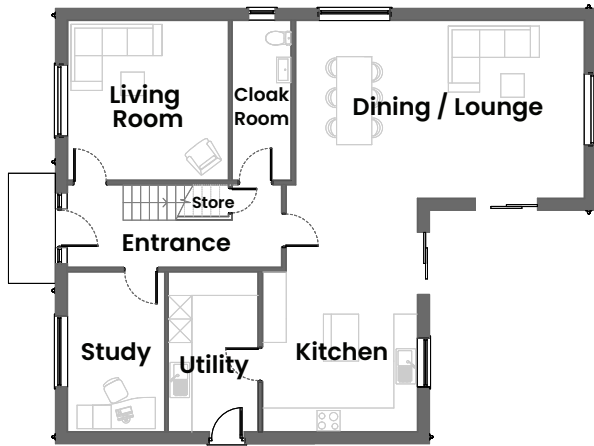


Cotswold

Three Bedroom  
Detached Home

Burton Pasture Development  
Brandesburton.



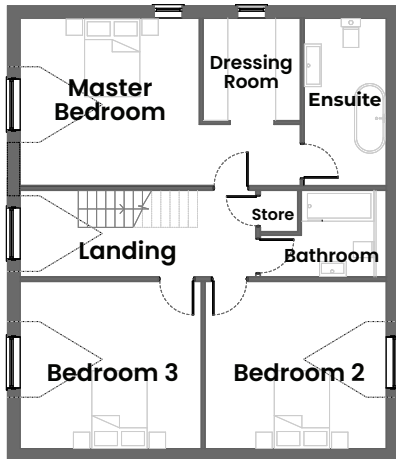


### Ground Floor

<b>Entrance</b>	5463mm x 2100mm	17'11" x 6'10"
<b>Snug</b>	4106mm x 4076mm	13'5" x 13'4"
<b>Cloakroom</b>	1500mm x 4076mm	4'11" x 13'4"
<b>Utility</b>	2288mm x 4076mm	7'6" x 13'4"
<b>Study</b>	2475mm x 4076mm	8'1" x 13'4"
<b>Kitchen</b>	3950mm x 5963mm	12'11" x 19'6"
<b>Dining / Lounge</b>	4540mm x 7371mm	14'10" x 24'2"
<b>Store</b>	1620mm x 800mm	5'3" x 2'7"



### First Floor



<b>Landing</b>	2100mm x 5747mm	6'10" x 18'10"
<b>Master Bedroom</b>	4076mm x 4371mm	13'4" x 14.4"
<b>Dressing Room</b>	2368mm x 2490mm	7'9" x 8'2"
<b>Ensuite</b>	1998mm x 4076mm	6'6" x 13'4"
<b>Bedroom 2</b>	4419mm x 4076mm	14'6" x 13'4"
<b>Bedroom 3</b>	4419mm x 4076mm	14'6" x 13'4"
<b>Bathroom</b>	2771mm x 2100mm	9'1" x 6'10"
<b>Store</b>	1266mm x 970mm	4'2" x 3'2"



Contact [sales@ullyotts.co.uk](mailto:sales@ullyotts.co.uk) or call 01377 253456 to make a reservation