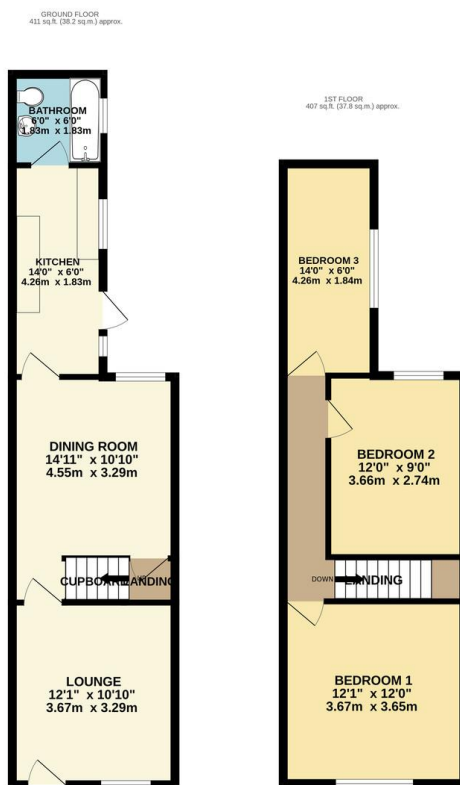




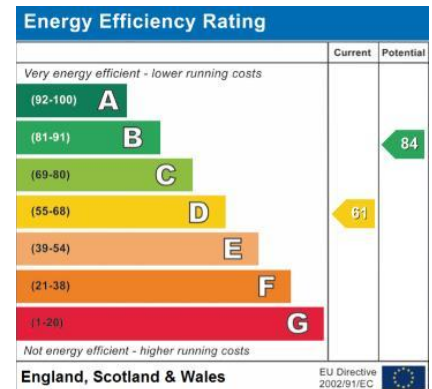
FOR SALE

3 Bed Mid Terraced House in Moors Road, Leicester LE4 6QR
£250,000

Located directly off Melton Road in Leicester and offered chain free this three bedroom mid town house offers an exciting opportunity for buyers looking to create a bespoke family home or investment property. The property requires full renovation throughout, providing a blank canvas to design and modernise to your personal taste. Its prime location benefits from excellent access to local amenities, shops, and schools, as well as convenient transport links into the city centre. Contact Phillips George to view.



TOTAL FLOOR AREA: 819 sq. ft. (76.1 sq.m.) approx.
Whilst every attempt has been made to ensure the accuracy of the floorplan contained here, measurements of floors, windows, rooms and any other items are approximate and no responsibility is taken for any error, omission or mis-statement. This plan is for illustrative purposes only and should be used as such by any prospective purchaser. The services, systems and appliances shown have not been tested and no guarantee as to their operability or efficiency can be given.
Made with Metropix i2024



- Mid Terraced
- Three Bedrooms
- No Chain
- Renovation Project
- Ground Floor Bathroom
- Two Reception Rooms
- On Street Parking
- Investment

Agents Note: Whilst every care has been taken to prepare these sales particulars, they are for guidance purposes only. All measurements are approximate and for general guidance purposes only and whilst every care has been taken to ensure their accuracy, they should not be relied upon and potential buyers are advised to recheck the measurements.

