



Vie Building, Water Street, Castlefield - Asking Price Of £220,000

Julie Twist Properties are delighted to welcome to the market this immaculately presented apartment which is located on the banks of the River Irwell in the Vie Building! This beautiful property is positioned on the 2nd floor and provides spectacular water views, which can be enjoyed from your own private balcony. The property consists of two double bedrooms, two bathrooms (one of which is an ensuite) and a large open plan living and kitchen area which benefits from floor to ceiling windows, allowing floods of natural light to fill the room. The property also includes a secure, allocated car parking space.

The Vie Building is situated on the edge of Castlefield, allowing its residents to enjoy a wide variety of bars, cafes, and restaurants nearby. Additionally, it's only a ten-minute walk to Deansgate and offers excellent access to public transport, with Cornbrook Metrolink Station just a short distance away.

- Immaculately Presented Two Bedroom Apartment
- Two Bathrooms
- 2nd Floor Position
- Private Balcony with Stunning Water Views
- Secure Allocated Parking Space
- Castlefield Location
- Short Walk to Deansgate
- Close to Public Transport Links



julietwistproperties



JulieTwistMCR



julietwistproperties



332-334 Deansgate, Manchester M3 4LY, England

T: 0161 834 8486

E: office@julietwist.com

www.julietwist.co.uk

GENERAL

Rental Yield: 7.36% (Based on expected rental price of £1350pcm)
Service Charge: £2802.28 per annum
Building Insurance: £173.38 per annum
Ground Rent: £270 per annum
Ground Rent Review Period: Every 10 years where it is adjusted by multiplying RPI last published immediately before each review date, rounding figure to nearest five pounds.
Lease: 125 years from 1 December 2006
Square Footage: 563 sq.ft / 52.3 sq.m
Council Tax Band: C (Manchester City Council)
Management Company: Ridley Thaw LLP

HALLWAY

Laminate, spotlights, access to storage cupboard housing the boiler and with plumbing for washing machine, and intercom entry system.

LIVING AREA

Double glazed, floor to ceiling windows, double glazed door leading onto a private balcony with water views, laminate flooring, wall mounted heater, phone/TV point, and ceiling lights.

KITCHEN

Open plan to the living area, the kitchen comprises wall and base units, integrated fridge/freezer, integrated slimline dishwasher, integrated wine fridge, built-in oven with four ring hob and extractor over, stainless steel sink with mixer tap and drainer, laminate flooring, spotlights, under unit lighting and extractor.

BEDROOM 1

Double glazed window, carpeted flooring, wall mounted heater, built in wardrobes, ceiling light and entrance to the ensuite.

ENSUITE

Accessed via bedroom 1, the ensuite comprises of a shower cubicle, WC, sink with mixer tap, heated towel rail, partially tiled walls, tiled flooring, extractor and spotlights lights.

BEDROOM 2

Double glazed window, carpeted flooring, wall mounted heater and ceiling lights.

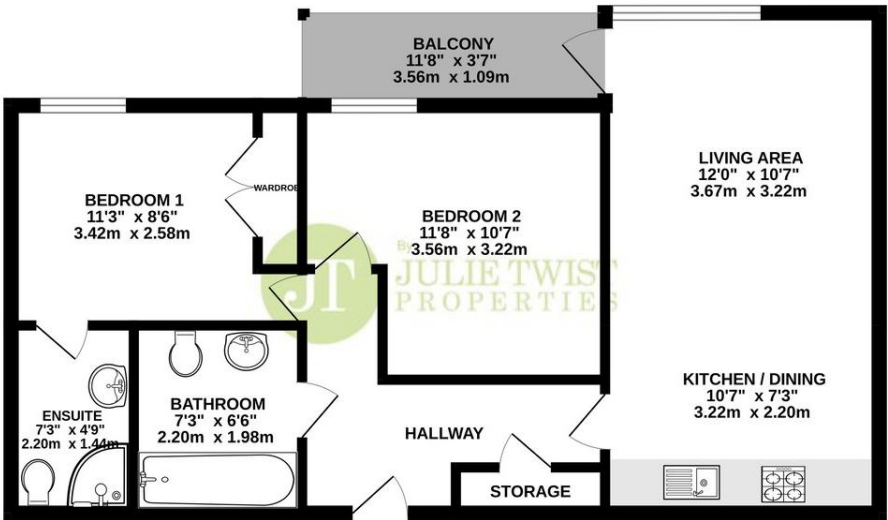
BATHROOM

Accessed via the hallway, a three piece bathroom comprising bath with shower attachment over, WC, sink with mixer tap, heated towel rail, partially tiled walls, tiled flooring, extractor and spotlights.

OTHER

This apartment benefits from a secure, allocated parking space.

SECOND FLOOR
563 sq.ft. (52.3 sq.m.) approx.



TOTAL FLOOR AREA: 563 sq.ft. (52.3 sq.m.) approx.

Whilst every attempt has been made to ensure the accuracy of the floorplan contained here, measurements of doors, windows, rooms and any other items are approximate and no responsibility is taken for any error, omission or mis-statement. This plan is for illustrative purposes only and should be used as such by any prospective purchaser. The services, systems and appliances shown have not been tested and no guarantee as to their operability or efficiency can be given.
Made with Metropix i2025

IMPORTANT NOTE TO PURCHASERS: We endeavour to make our sales particulars accurate and reliable, however, they do not constitute or form part of an offer or any contract and none is to be relied upon as statements of representation or fact. The services, systems and appliances listed in this specification have not been tested by us and no guarantee as to their operating ability or efficiency is given. All measurements have been taken as guide to prospective buyers only, and are not precise. If floor plans where included, these may not be to scale and accuracy is not guaranteed. If you require clarification or further information on any points, please contact us, especially if you are travelling some distance to view.

