

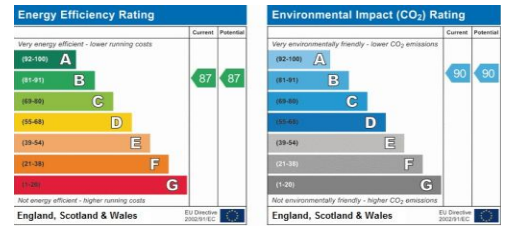
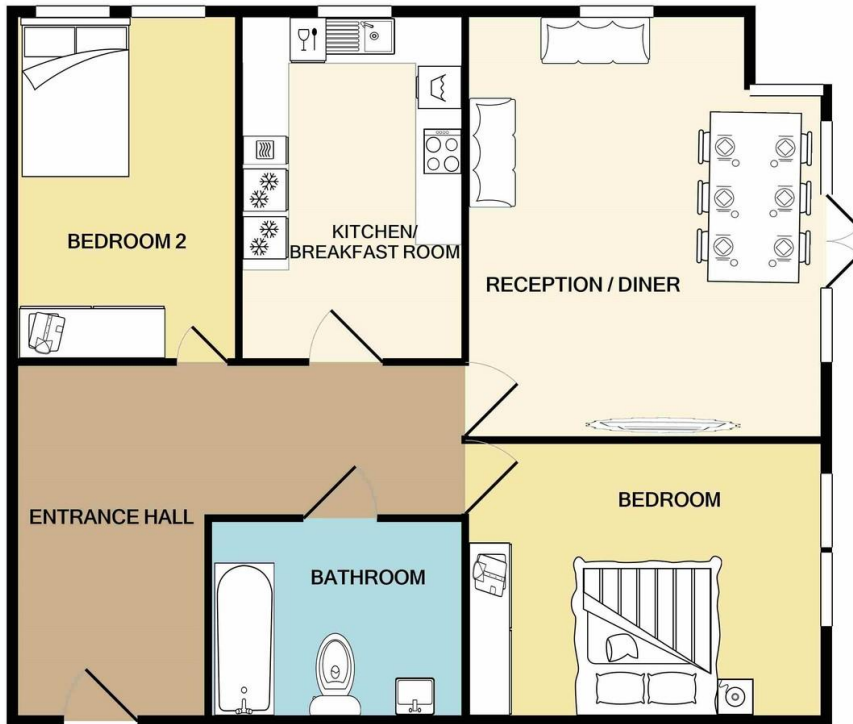
Maven court

Sudbury Hill, Harrow, , HA1 3SB

£1,550 pcm



# Property Summary



- Ground Floor Flat
- New build
- Private entrance
- Own Parking
- Two double bedrooms
- Carpeted
- In-built fitted kitchen
- Modern
- Central heating
- Available end of May

TOTAL APPROX. FLOOR AREA 1051 SQ.FT. (97.6 SQ.M.)

Whilst every attempt has been made to ensure the accuracy of the floor plan contained here, measurements of doors, windows, rooms and any other items are approximate and no responsibility is taken for any error, omission, or mis-statement. This plan is for illustrative purposes only and should be used as such by any prospective purchaser. The services, systems and appliances shown have not been tested and no guarantee as to their operability or efficiency can be given

38 Court Parade  
 Wembley  
 Middlesex  
 HA0 3HS

www.propertyhubltd.com  
 info@propertyhubltd.com  
 0208 903 1002

Agents Note: Whilst every care has been taken to prepare these particulars, they are for guidance purposes only. All measurements are approximate are for general guidance purposes only and whilst every care has been taken to ensure their accuracy, they should not be relied upon and potential buyers/tenants are advised to recheck the measurements