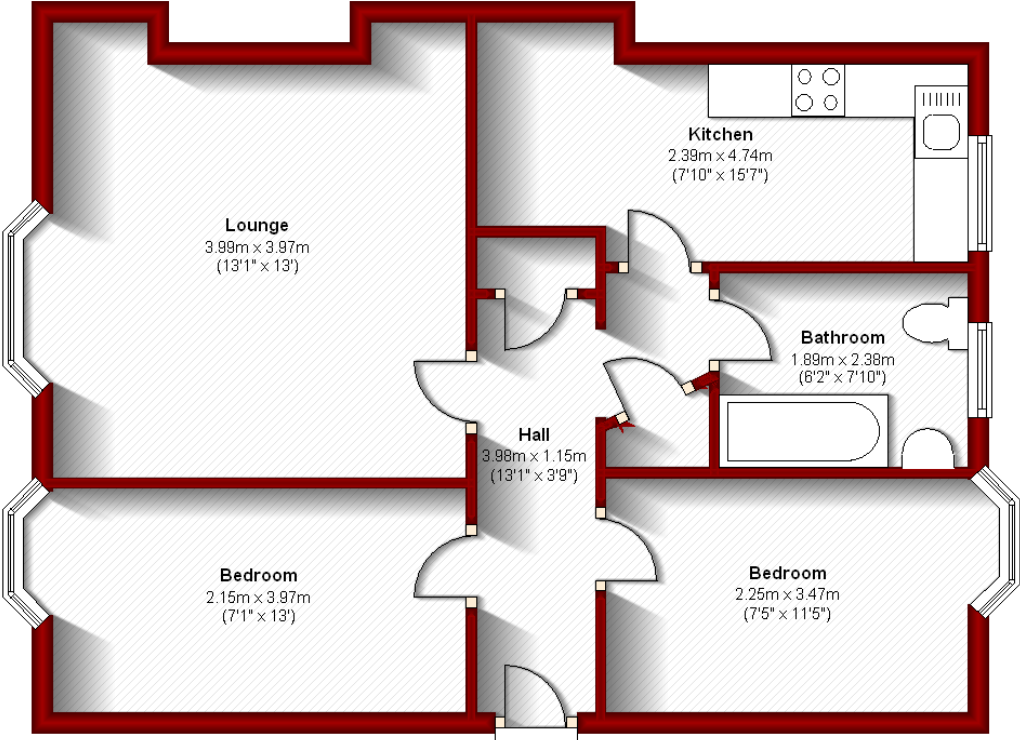


**12 Ferryhill Terrace
1st Right
Aberdeen**

Ground Floor

Approx. 54.4 sq. metres (585.3 sq. feet)



Total area: approx. 54.4 sq. metres (585.3 sq. feet)

The above particulars are for guidance only, no liability for any errors or omissions will be accepted by Aberdeen Property Leasing Ltd.