

**Head Office:**  
Dixon Kelley Estate Agents  
1 Penn Court  
Station Road, West Moors  
Dorset. BH22 0JJ

**Telephone: 01202 877511**

# DORSET PARK HOMES

**DRAFT**

[www.dorsetparkhomes.com](http://www.dorsetparkhomes.com)

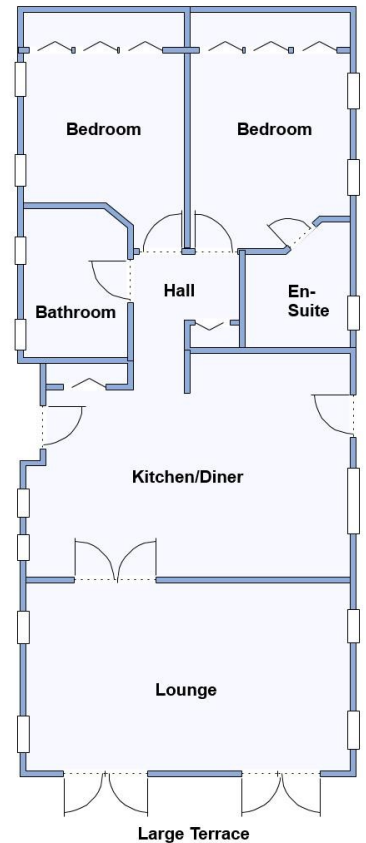
**10 White Horse Park, Osmington, Weymouth. DT3 6ED**

High quality, recently developed Residential Park of only 17 homes



Omar 'Ikon' Park Home 46' x 20' manufactured 2018

## Modern Park Home with Large Terrace



This drawing has been prepared for diagrammatic purpose only. Not to scale

### Approximate room dimensions & brief description:

- **Kitchen/Diner:** approx 18'10" x 13'5". Superb kitchen with integrated dishwasher, washing machine & fridge/freezer. Built-in oven, hob & cooker hood. Good range of wall and base units. Island unit. Cupboard housing electric boiler. Vaulted ceiling with LED spot lights & sky light windows. Door to driveway & side path.
- **Lounge:** approx 18'10" x 11'1". A stunning room with 2 sets of doors leading to Large Sun Terrace. Feature fireplace.
- **Bedroom 1:** approx 11'4" x 9'3" Plus fitted wardrobes.
- **Luxury En-Suite Shower Room**
- **Bedroom 2:** approx 9'2" x 9' Plus fitted wardrobes.
- **Bathroom:** Double ended bath. Vanity wash basin & WC. Chrome heated towel rail.
- **Electric Central Heating & Double-Glazing**
- **Vaulted ceilings with LED Lighting**
- **Large Sun Terrace** with sunny aspect & sea glimpse.
- **Patio Area** with useful Garden Shed with light & power. Wonderful countryside view.
- **'On-Plot' Parking**
- **Age Restriction 45+ Dogs Considered**

## Wonderful Rural Views



**Price £250,000**

**VIEWING STRICTLY BY APPOINTMENT WITH THE VENDOR'S AGENT Dorset Park Homes 01202 877511**

**IMPORTANT NOTE:** These particulars are believed to be correct but their accuracy is not guaranteed. They do not form part of any contract. Nothing in these particulars shall be deemed to be a statement that the property is in good structural condition or otherwise, nor that any of the services, appliances, equipment or facilities are in good working order or have been tested. Purchasers should satisfy themselves on such matters prior to purchase Ref.W04986

**Pitch Fee: approx £69.45 per week including sewerage**  
**Subject to Annual Review**  
**Council Tax Band: 'A'** **Tenure: 1983 Mobile Homes Act Agreement**

*The recommended specialist in Park Home sales*  
Proprietor: Simon Dixon

