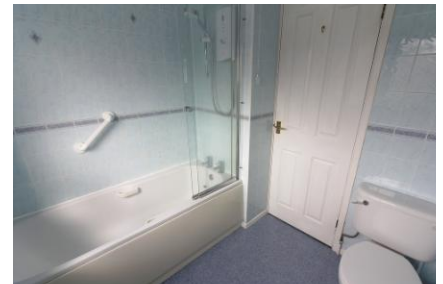




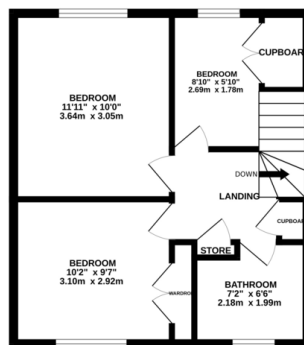
## FOR SALE

3 Bed Mid Terraced House in Winders Way, Aylestone, LE2 8SS  
£210,000

\*\*\* No Chain \*\*\* Three bedroom mid town house for sale close to Leicester City Centre and a selection of road networks and amenities. The accommodation comprises porch, entrance hall, kitchen, lounge diner, three bedrooms, bathroom, rear garden, driveway and integral garage. An ideal first home.



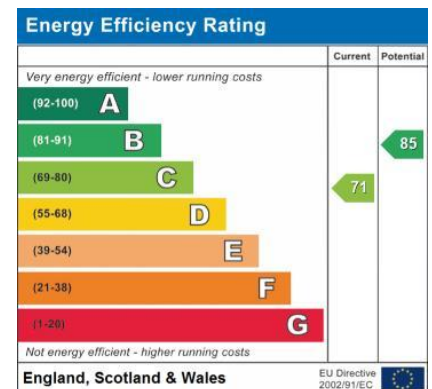
1ST FLOOR  
400 sq.ft. (37.2 sq.m.) approx.



FLOORPLAN BY PHILLIPS GEORGE ESTATE AGENTS

TOTAL FLOOR AREA : 875 sq.ft. (81.3 sq.m.) approx.

Whilst every attempt has been made to ensure the accuracy of the Floorplan contained here, measurements of doors, windows, rooms and any other items are approximate and no responsibility is taken for any error, omission or mis-statement. This plan is for illustrative purposes only and should be used as such by any prospective purchaser. The services, systems and appliances shown have not been tested and no guarantee as to their operability or efficiency can be given.  
Made with Metropix ©2025



- No Chain
- Mid Town House
- Garage
- Off Road Parking
- Three Bedrooms
- Quiet Cul-De-Sac
- Spacious Lounge
- Close To Road Networks

**Agents Note:** Whilst every care has been taken to prepare these sales particulars, they are for guidance purposes only. All measurements are approximate and for general guidance purposes only and whilst every care has been taken to ensure their accuracy, they should not be relied upon and potential buyers are advised to recheck the measurements.

