



bonners & babingtons

Kingfisher House
Marlow

Kingfisher House
Dedmere Road
Marlow
Buckinghamshire
SL7 1PG

Tenure: Share of Freehold

Guide Price: £425,000

Annual Service Charge: £1,000
p/a inclusive of building insurance

Annual Ground Rent: £0

Council Tax Band: D

EPC Rating: C



A superb 3 bedroom duplex apartment with well proportioned rooms, situated in a prime location within an easy walk of the town centre and train station.

The property is offered 'for sale' with NO UPPER CHAIN and the 'Share of Freehold'.

The accommodation briefly comprises entrance hall, good size living room with French doors opening onto a balcony, fitted kitchen with integrated appliances, landing, 2 double bedrooms and bathroom. On the first floor there is a good size principle bathroom with storage.

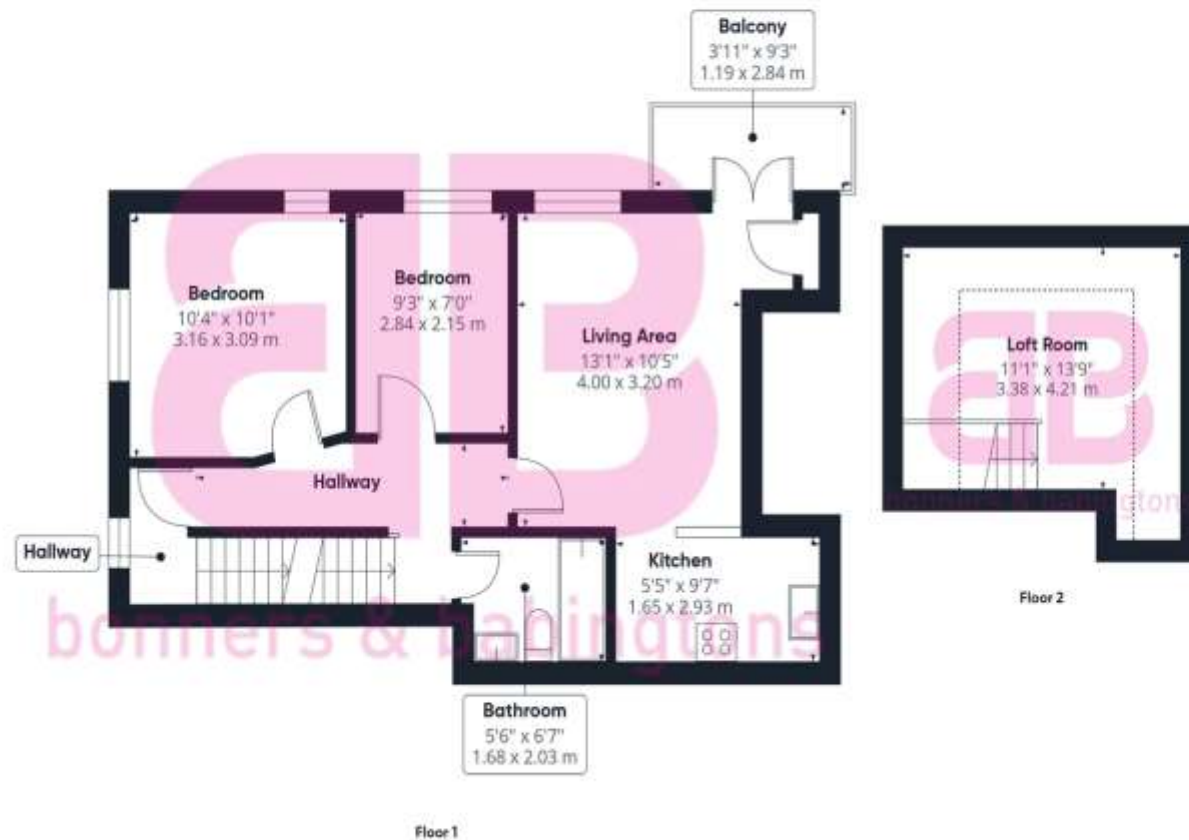
Outside there is allocated parking for 2 cars and a beautifully kept enclosed communal garden. The property benefits from gas central heating and double glazing.

Marlow town centre is a thriving and stylish riverside community with a comprehensive range of shops and excellent pubs and restaurants. Nearby Marlow Station has a regular train service to London Paddington via Maidenhead (from 44 mins) with links to the City of London, via the Elizabeth Line.

Access to the M4 and M40 is via the A404(M) and London Heathrow is approximately 22 miles away.

There is a wide range of educational and recreational facilities in the area. Excellent local schools are numerous and include Sir William Borlase in Marlow.





Approximate total area⁽¹⁾

660 ft²
61.3 m²

Balconies and terraces

37 ft²
3.4 m²

Reduced headroom

73 ft²
6.7 m²

(1) Excluding balconies and terraces

Reduced headroom:
Below 5 ft 1.5 m

While every attempt has been made to ensure accuracy, all measurements are approximate, not to scale. This floor plan is for illustration purposes only.

Calculations were based on RICS-IPMS 3C standard. Please note that calculations were adjusted by a third party and therefore may not comply with RICS-IPMS 3C.

GIRAFFE360



bonners & babingtons

Anglers Court, Spittal Street, Marlow, Bucks, SL7 3HJ

01628 333800

marlow@bb-estateagents.co.uk

rightmove

onTheMarket

Zoopla.co.uk



Disclaimer

We endeavour to make our particulars accurate and reliable. They are for guidance only and are intended to give a fair overall summary of the property. They do not form part of any contract or offer, and should not be relied upon as a statement or representation of fact. Measurements, areas and distances are approximate and photographs provided for guidance only. No undertaking is given as to the structural condition of the property, or any necessary consents, or the operating ability or efficiency of any service, system or appliance. Prospective purchasers must satisfy themselves with regard to each of these points. If there is any particular aspect of the property about which you would like further information, please contact us, especially, before you travel to the property. B2170