



Wimborne
Dorset, BH21 2BL

Wimborne, Dorset, BH21 2BL

FREEHOLD PRICES FROM £465,000

- **Elegant New England style development of just 3 new homes**
- **10 year NHBC warranty**
- **Quality kitchens by Kitchen Elegance of Poole**
- **High quality specification**
- **A truly exceptional opportunity**
- **Gas central heating, underfloor and radiators**
- **1 mile from Wimborne town centre**
- **Stylish bathrooms and en suite shower rooms**
- **Brick paviour driveways and parking**
- **Oversized garages with electrically operated doors**
- **Satellite points to all principle rooms**
- **Superb fitted wardrobes**



Brookside Road in Wimborne is a superb new development of just three chalet bungalows on the outskirts of the town centre. These stunning architect designed homes have been sympathetically designed in New England style and are built by local developers Badbury Developments, recent Regional Winners of the Building Excellence Award 2015.

The amenities of Wimborne are approximately 1 mile away offering an excellent range of shops, cafes and restaurants with quaint streets, charming river walkways and historic courtyards. Wimborne is also famed for its town events, especially the folk festival and has enjoyed many Britain in Bloom successes.

These outstanding homes are finished to a high quality specification including contemporary bathrooms and shower rooms, quality kitchens designed and fitted by Kitchen Elegance of Poole with integrated appliances, gas central heating via radiators and under floor, flooring coverings including ceramic tiles and fitted carpets, double glazing, low voltage lighting and high insulation levels.

The development is set for ease of maintenance with landscaped lawned gardens, brick paviour driveways with oversized garages with electrically operated doors.



1 Brookside Road

Price £475,000 Freehold



Note: Outbuildings may not be positioned correctly, but are included in the floor area calculations.



LJT SURVEYING Total area: approx. 138.0 sq. metres (1485.7 sq. feet)

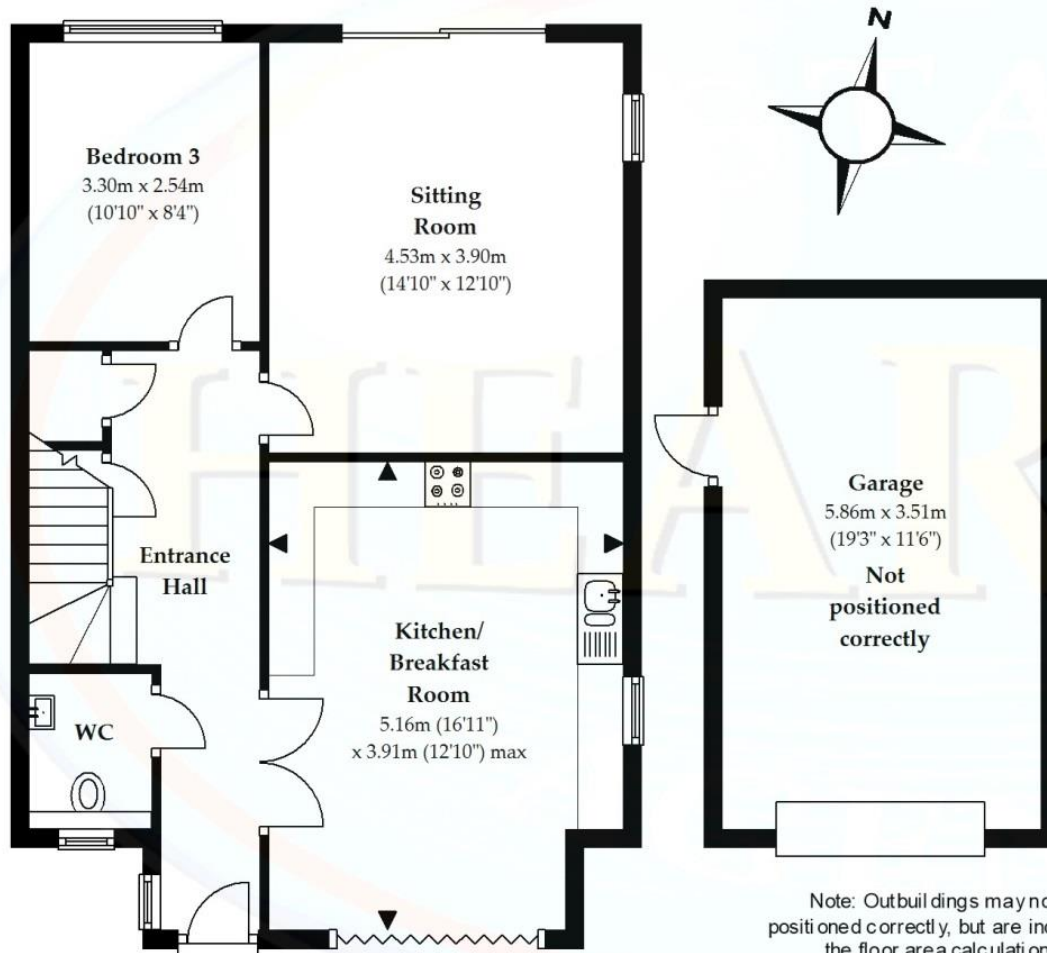
Plan not to scale and for illustrative purposes only. All internal spaces attached to the main property are included in the floor area stated. Dimensions, north point and all other items are approximate and should not be relied upon. 3D plans do not represent the state of the property. LJT Surveying Ringwood

1a Brookside Road

Price £465,000 Freehold

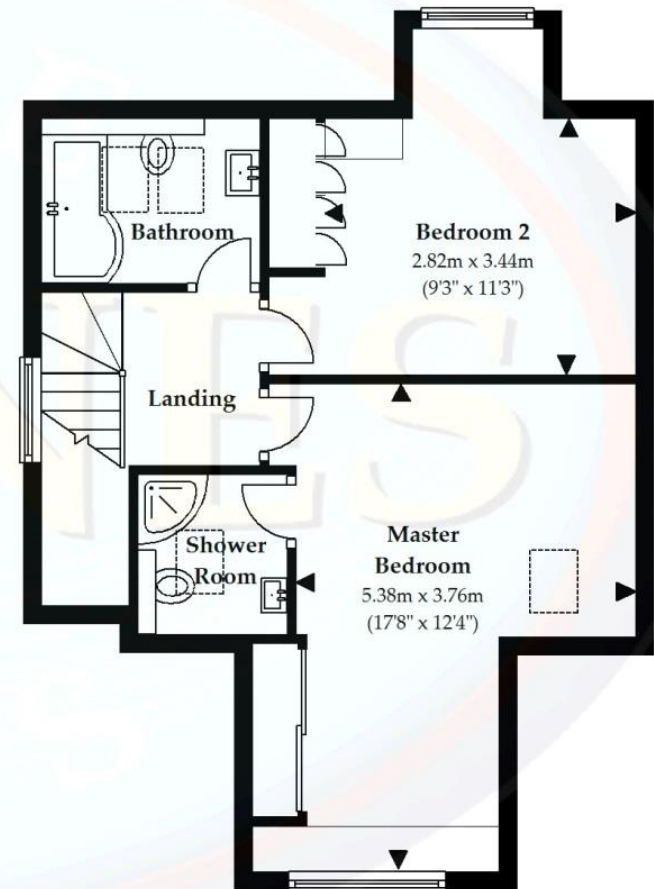
Ground Floor

Approx. 82.3 sq. metres (885.8 sq. feet)



First Floor

Approx. 45.5 sq. metres (489.9 sq. feet)



Note: Outbuildings may not be positioned correctly, but are included in the floor area calculations.



LJT SURVEYING Total area: approx. 127.8 sq. metres (1375.7 sq. feet)

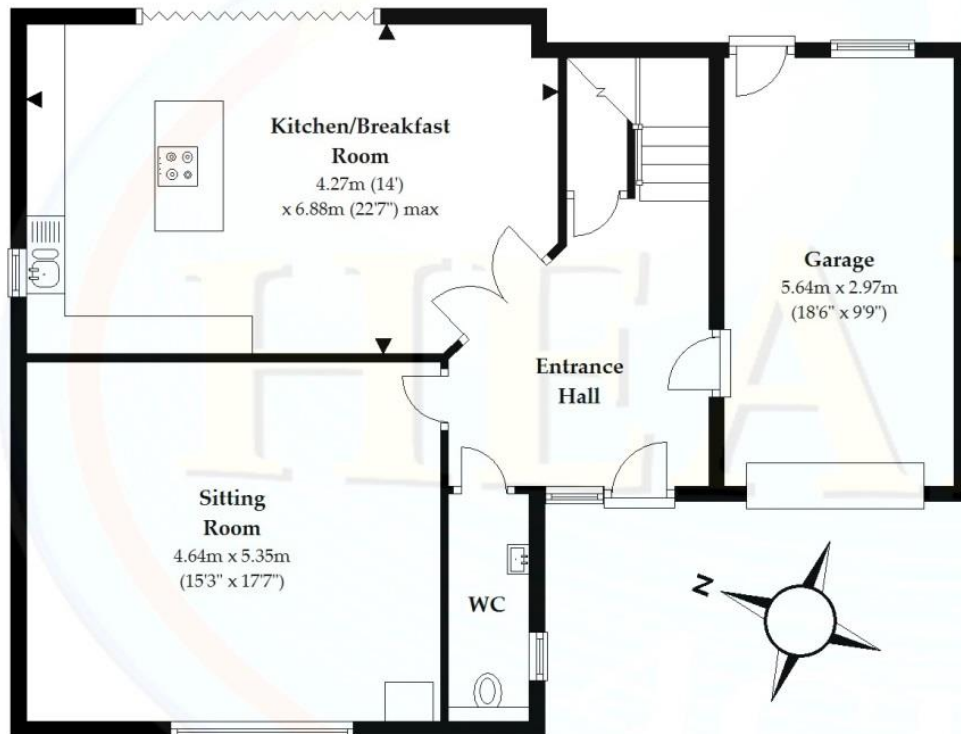
Plan not to scale and for illustrative purposes only. All internal spaces attached to the main property are included in the floor area stated. Dimensions, north point and all other items are approximate and should not be relied upon. 3D plans do not represent the state of the property. LJT Surveying Ringwood

1b Brookside Road

Price £495,000 Freehold

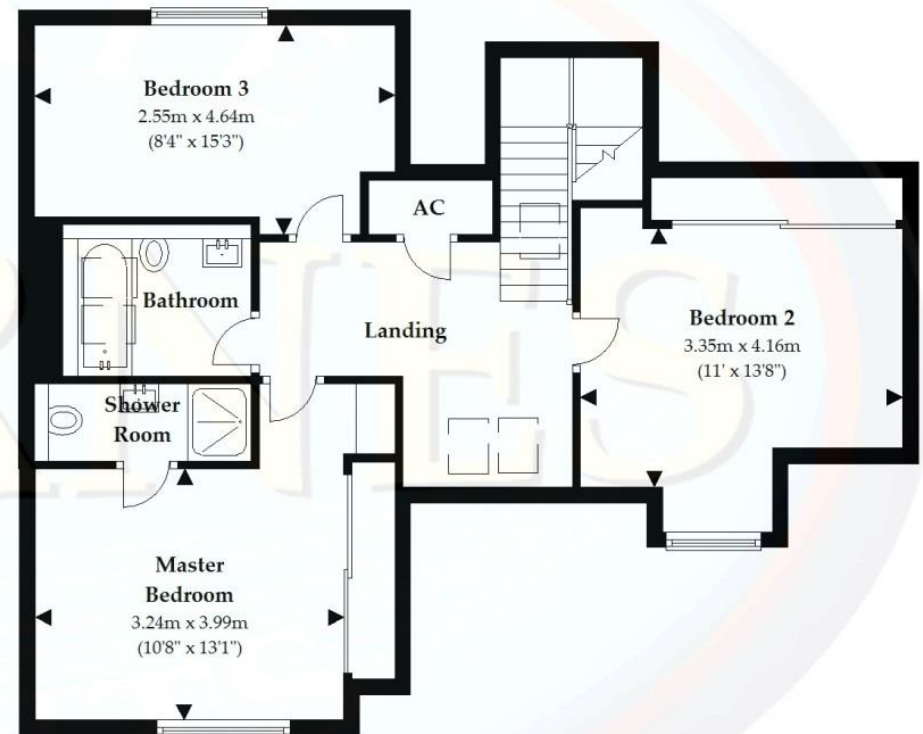
Ground Floor

Approx. 88.4 sq. metres (951.8 sq. feet)



First Floor

Approx. 70.3 sq. metres (756.5 sq. feet)



LJT SURVEYING Total area: approx. 158.7 sq. metres (1708.4 sq. feet)

Plan not to scale and for illustrative purposes only. All internal spaces attached to the main property are included in the floor area stated. Dimensions, north point and all other items are approximate and should not be relied upon. 3D plans do not represent the state of the property. LIT Surveying Ringwood



'Where service counts'

6 Cook Row, Wimborne, Dorset BH21 1LB

Tel: 01202 842922

Email: wimborne@hearnes.com

www.hearnes.com

Offices also at: Bournemouth 01202 317317 Ferndown 01202 890890 Ringwood 01425 489955