



Barnes Close, Southampton **Offers Over £115,000**







Barnes Close, Southampton

Offers Over £115,000

Property Description

This lovely 2 double bedroom split level flat offers a fantastic amount of space and storage throughout. Upstairs there are 2 double bedrooms which benefit from lots of natural light and a bathroom. Downstairs there is a good sized kitchen and lounge with underfloor heating plus storage cupboards. This flat is a perfect first time buy and is being sold with no forward chain which means you can move straight in as soon as you are ready! EPC grade E.

Our View

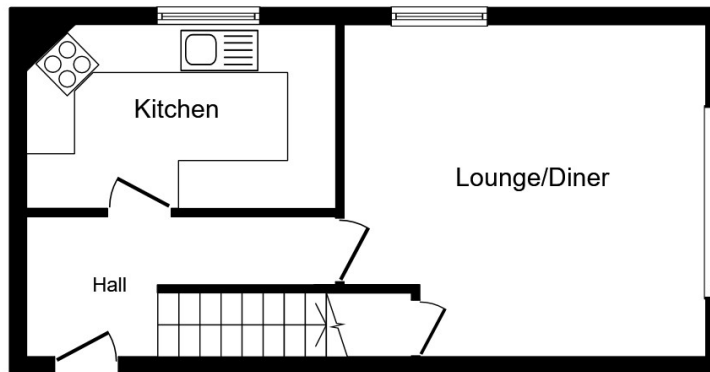
The overall size and condition of this flat is very impressive and we do not envisage it being available for long. Please book your viewing at the earliest opportunity. For room dimensions please visit the property on your-move.co.uk

Location

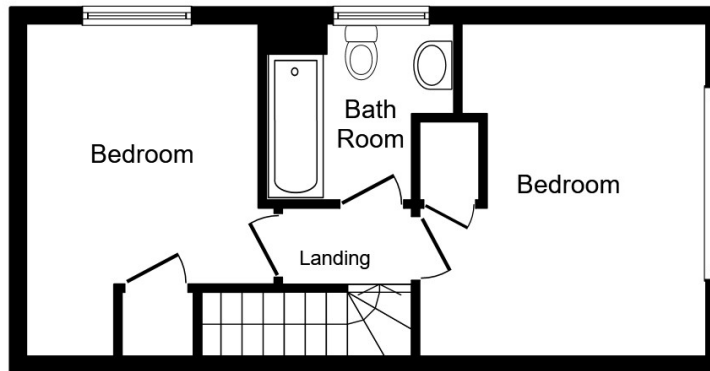
Nicely tucked away with easy access into Bitterne and Hedge End.



EPC Grade E
For full EPC please contact the branch



Ground Floor



First Floor

This plan is for illustration purposes only and may not be representative of the property.
Plan not to scale.

Powered by audioagent.com

IMPORTANT NOTE TO PURCHASERS: We endeavour to make our sales particulars accurate and reliable, however, they do not constitute or form part of an offer or any contract and none is to be relied upon as statements of representation or fact. The services, systems and appliances listed in this specification have not been tested by us and no guarantee as to their operating ability or efficiency is given. All measurements have been taken as guide to prospective buyers only, and are not precise. Floor plans where included are not to scale and accuracy is not guaranteed. If you require clarification or further information on any points, please contact us, especially if you are travelling some distance to view. Fixtures and fittings other than those mentioned are to be agreed with the seller.

Your Move is a trading name of your-move.co.uk, registered in England at Newcastle House, Albany Court, Newcastle Business Park, Newcastle upon Tyne NE4 7YB (number 01864469).

4 West End Road, Southampton, SO18 6TG

02380 440411 * Bitterne@your-move.co.uk

*Calls may be recorded and/or monitored for training and/or security purposes.

