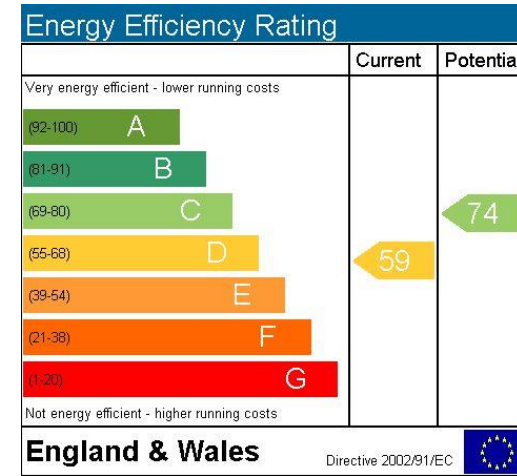




Crescent Wood Road, SE26

£410,000





- A stunning 2<sup>nd</sup> floor period conversion flat
- Set within a substantial Victorian mansion
- Stylish and contemporary interior
- 2 double bedrooms,
- Lounge/dining room open-plan to fitted kitchen
- Modern bathroom, off-street parking and communal gardens
- Stunning views towards central London
- Sought after location close to Dulwich, Crystal Palace and Lordship Lane

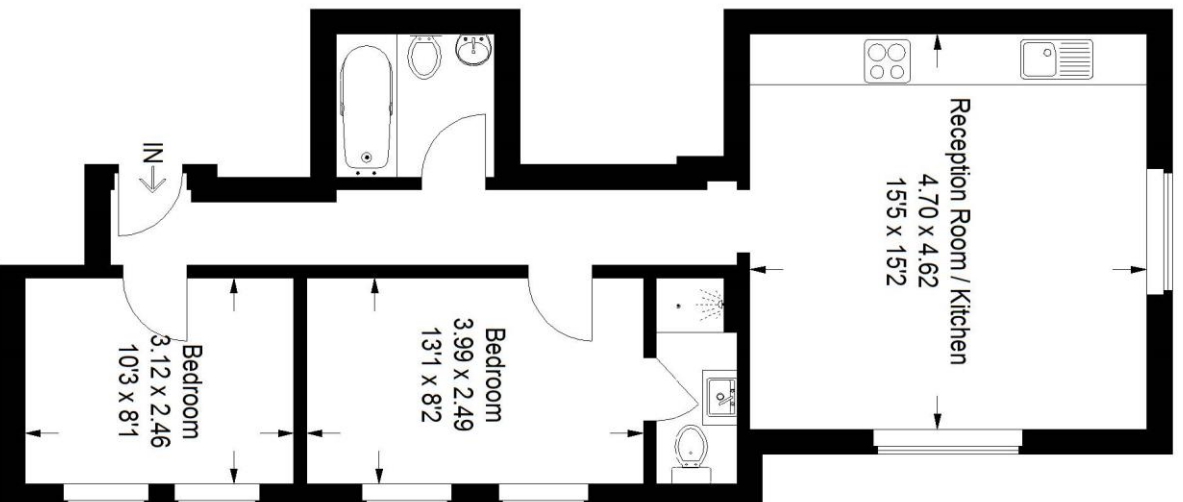
A stunning 2<sup>nd</sup> floor period apartment for sale set within a substantial and imposing detached Victorian mansion. The apartment is very well presented with a stylish and contemporary interior and has accommodation comprising 2 double bedrooms, lounge/dining room open-plan to a fitted kitchen and modern bathroom. This beautiful building is set behind a gated entrance and there are private communal gardens and to the front there is a large driveway providing off street parking. The property is well located for access to East Dulwich and Crystal Palace which offer a large variety of shopping facilities, cafes and bars. Dulwich Village is also easily accessible with its boutiques, restaurants, Picture Gallery and golf course. The popular Sydenham and Dulwich Woods are just a short distance away. The nearest railway stations are Sydenham Hill and Crystal Palace with links into central London. (EPC rating D)

Pedder Property Ltd trading as Pedder for themselves and for the vendor/landlord of this property whose agents they are, give notice that (1) these particulars do not constitute any part of an offer or contract, (2) all statements contained within these particulars are made without responsibility on the part of Pedder or the vendor/landlord, (3) whilst made in good faith, none of the statements contained within these particulars are to be relied upon as a statement of representation or fact, (4) any intending purchaser/tenant must satisfy him/herself by inspection or otherwise as to the correctness of each of the statements contained within these particulars, (5) the vendor/landlord does not make or give either Pedder or any person in their employment any authority to make or give representation or warranty whatsoever in relation to this property.

# Crescent Wood Road, SE26



Approximate Gross Internal Area  
53.8 sq m / 579 sq ft



## Second Floor

Copyright [www.pedderproperty.com](http://www.pedderproperty.com) © 2015  
These plans are for representation purposes only as  
defined by RICS - Code of Measuring Practice. Not to Scale