



Hiltingbury Road, Chandler's Ford, SO53 5NP

Jonathan Rees



Positioned in the heart of Hiltingbury this ground floor maisonette benefits a private garden, garage and two bedrooms.

£165,000



No Chain
Two Bedrooms
Garage
Hiltingbury School Catchment
Thornden School Catchment
Close To Shops
Gardens
Ideal For Investment/First Time Buyers



HALLWAY

Airing cupboard housing the hot water tank.

SITTING ROOM

13' 8" x 11' 1" (4.17m x 3.38m)

Double glazed window overlooking the rear garden, electric fire in tiled surround, night storage heater.

KITCHEN

7' 6" x 7' 6" (2.29m x 2.29m)

A range of floor and base fitted units, stainless steel sink, electric cooker, upright fridge/freezer and washing machine, window.

BEDROOM ONE

11' 1" x 10' 3" (3.38m x 3.12m)

Double glazed window overlooking the rear garden, night storage unit.

BEDROOM TWO

11' 1" x 10' 3" (3.38m x 3.12m)

Double aspect with double glazed windows, night storage unit.

BATHROOM

A white suite comprising a bath with electric shower over, low level WC, pedestal wash hand basin, window.

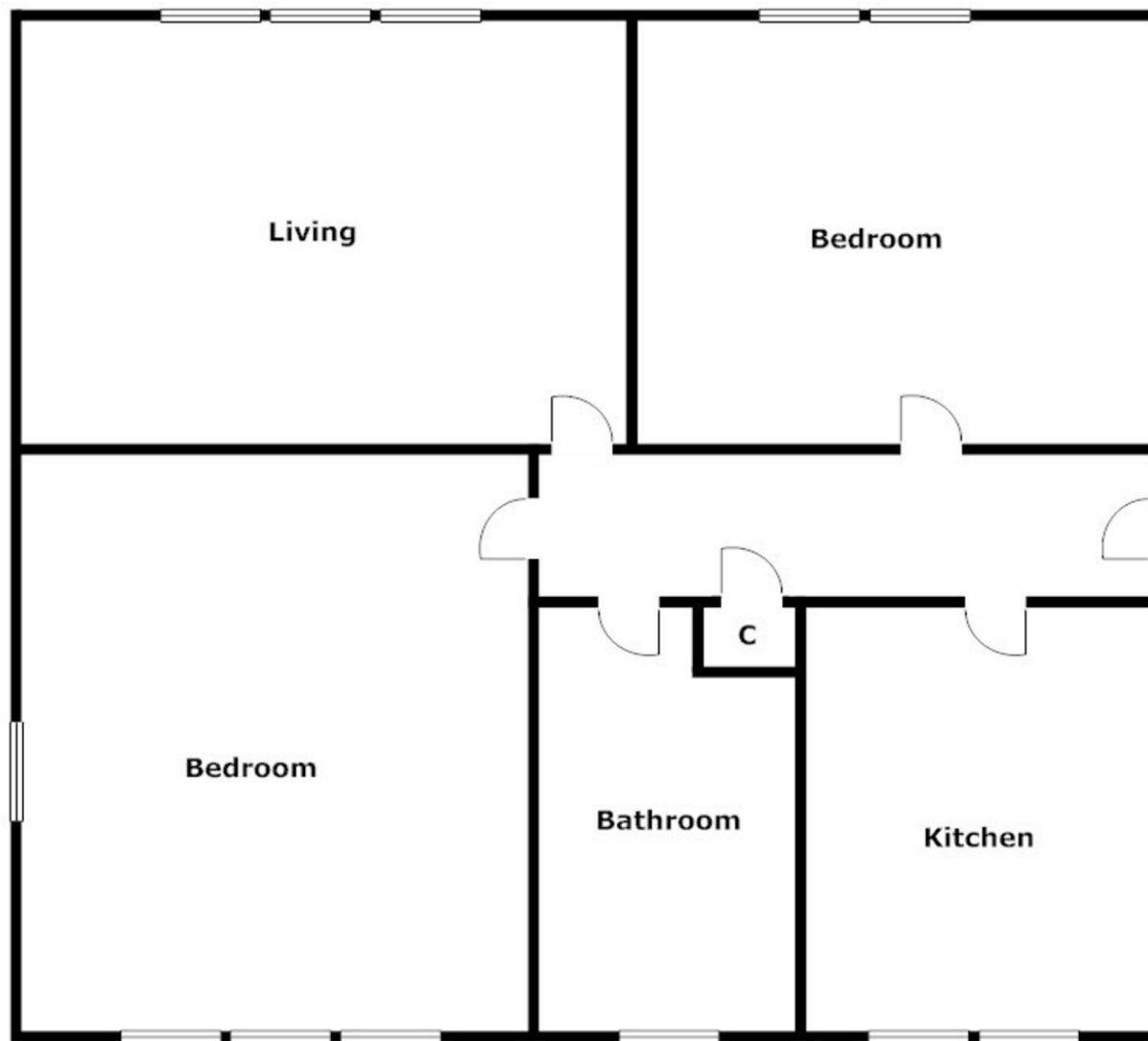
GARAGE

The garage can be found in a block to the rear of property.

GARDENS

To the front and rear both laid to lawn with shrub borders.





Key Information

LOCAL AUTHORITY INFORMATION

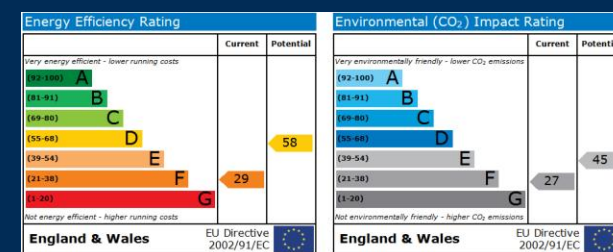
Eastleigh Borough Council
Tax Band 'A'

LOCAL SCHOOLS INFORMATION

Infant: Hiltingbury Infant School
Junior: Hiltingbury Junior School
Secondary: Thornden Secondary School

EPC RATING

F/36



IMPORTANT NOTICE

These details have been prepared and issued in good faith and do not constitute representations of fact or form part of any offer or contract.

Please note that we have not carried out a structural survey of the property, nor have we tested any of the services or appliances.

All measurements are intended to be approximate only. All photographs show parts of the property as they were at the time when taken.

Any reference to alterations or particular use of the property wherever stated, is not a statement that planning, building regulations or other relevant consent has been obtained.

Floorplan. All measurements, walls, doors, windows, fittings and appliances, their sizes and locations are shown conventionally and are approximate only and cannot be regarded as being a representation either by the seller or his Agent.

100 Winchester Road, Chandler's Ford, Hampshire, SO53 2GJ

t: 023 8027 6500

e: sales@jonathanrees.com

