



James *J* LaurenceTM
Sales and Lettings

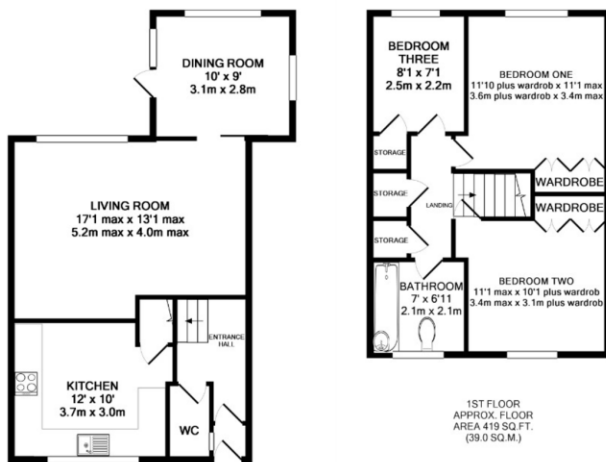
17, BERROW DRIVE, EDGBASTON, WEST MIDLANDS, B15
3UA
OFFERS OVER £320,000





PROPERTY DESCRIPTION

An excellent starter/family home set back from the road, within the desirable Calthorpe Estate, this end terrace townhouse is in close proximity to Chad Square, amenities of Harborne High Street and the Queen Elizabeth Hospital. Excellent road and transport links are offered to Birmingham city centre with offering a plethora of shopping, dining and leisure facilities. The property boasts living room-complete with large picture window aspect of the rear garden, with further dining room a rarity in this style of house, front facing kitchen, and WC in downstairs accommodation. Upstairs double bedrooms boasting wardrobe/storage are complimented by a contemporary refitted bathroom. Double glazing and gas central heating are included where specified, whilst there is access to garage en bloc through the rear gate. A must for families, first time buyers and indeed the savvy buy to let landlord.



GROUND FLOOR
APPROX. FLOOR AREA 485 SQ. FT. (45.0 SQ. M.)

TOTAL APPROX. FLOOR AREA 904 SQ. FT. (84.0 SQ. M.)

Whilst every attempt has been made to ensure the accuracy of the floor plan contained here, measurements of doors, windows, rooms and any other items are approximate and no responsibility is taken for any error, omission, or mis-statement. This plan is for illustrative purposes only and should be used as such by any prospective purchaser. The services, systems and appliances shown have not been tested and no guarantee as to their operability or efficiency can be given.
Made with Metropix ©2017

